



吹瓶系统方案供应商

# PACKAGING SOLUTIONS

Stretch blow molding – systems for plastic bottles



# MY BEST PARTNER OF BLOWING BOTTLE

我们拥有吹瓶工艺的专业知识，专业制造和开发PET吹瓶机及吹瓶模具于一体，能全方位解决您在包装上的需求。

## 百星机械之优势

- 产品轻量化，减少原料使用,降低成本
- 设备性能高效，产品质量高
- 无尘车间生产，保洁和卫生标准
- 产线完备，交期准备不延误

## Baixing machinery advantage

- Lighter products, less material used, and lower cost
- Better equipment performance and higher product quality
- Cleanroom to meet sanitary requirement
- Complete productionline, delivery on time



## Brief Introduction

- ★ Taizhou Huangyan Baixing Plastic Machinery Factory is specialized in developing and manufacturing PET stretch blow moulding machines and blowing moulds. We have many years experience of researching and producing blow moulding machines. Our main products are: BX series full automatic machines, hand feeding and Semi-automatic blow moulding machines with all kinds and sizes of moulds. The main parts of The machines are from Germany, Japan, Switzerland, Korea, Taiwan and so on, They can make 10ml-25L bottles and barrels and jars with different designs and shapes. Our machines are sold to Philippines, Malaysia, Indonesia, Iraq, Syria, Nigeria, Pakistan, Mexico, Paraguay, Peru, Russia and many other countries and regions.
- ★ To produce machines with the best quality and simple operation and with the best price is the aim for Baixing Machinery to strive for.
- ★ 台州市黄岩百星塑料机械厂是一家专业制造和开发PET吹瓶机及吹瓶模具于一体的公司，本公司从事吹瓶行业已有多年的历史。目前百星机械主要产品有：BX系列全自动，手动和半自动二步法吹瓶机以及各种形状与规格的吹瓶模具。主要的机器零部件均选用德国，日本，瑞士，韩国和台湾等国际知名产品。BX系列吹瓶机可以生产10ml-25L等各种形状的PET塑料瓶/桶/罐，产品远销菲律宾、马来西亚、印度尼西亚、伊拉克、叙利亚、巴基斯坦、尼日利亚、墨西哥、巴拉圭、秘鲁、俄罗斯等国家和地区。
- ★ 为客户制造出性能优良、稳定耐用、操作简便、价格实惠的二步法中空成型机是百星机械努力奋斗的目标。



## MBEST PARTNER OF BLOWING BOTTLE 高品质的服务

品质是产品重要核心，优异的PET吹瓶系统必须同时兼具高效能、吹瓶成型精准性，百星实行严苛的品质政策，我们的工作人员经过专业的精益生产培训，时刻把品质放在第一位，为客户提供最高品质的产品和服务

Quality is an important core of the product. The excellent PET bottle blowing system must have both high performance and precision in blow molding. The high quality requirements have always been Baixing's most important part. Baixing adopts stringent quality policies. Our staff are professionally trained in lean production, always putting quality first and providing customers with the highest quality products and services.



### 应用领域 Application

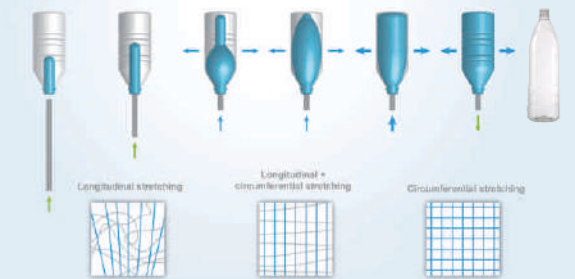
- 矿泉水 Mineral water
- 软饮料 Soft drinks
- 果汁 Juices, Isotonics
- 茶, 咖啡 Teas, coffees
- 牛奶及日用品 Milk and dairy products
- 食用油 Edible oil
- 啤酒, 洋酒 Beer and liquors
- 面食包装产品 Paste & semi-paste products
- 沙拉酱 Salad dressings
- 化妆品及洗涤用品 Cosmetics & Detergents
- 医疗用品 Pharmaceuticals



## Energy-efficient stretch blow molding technology for your PET bottles

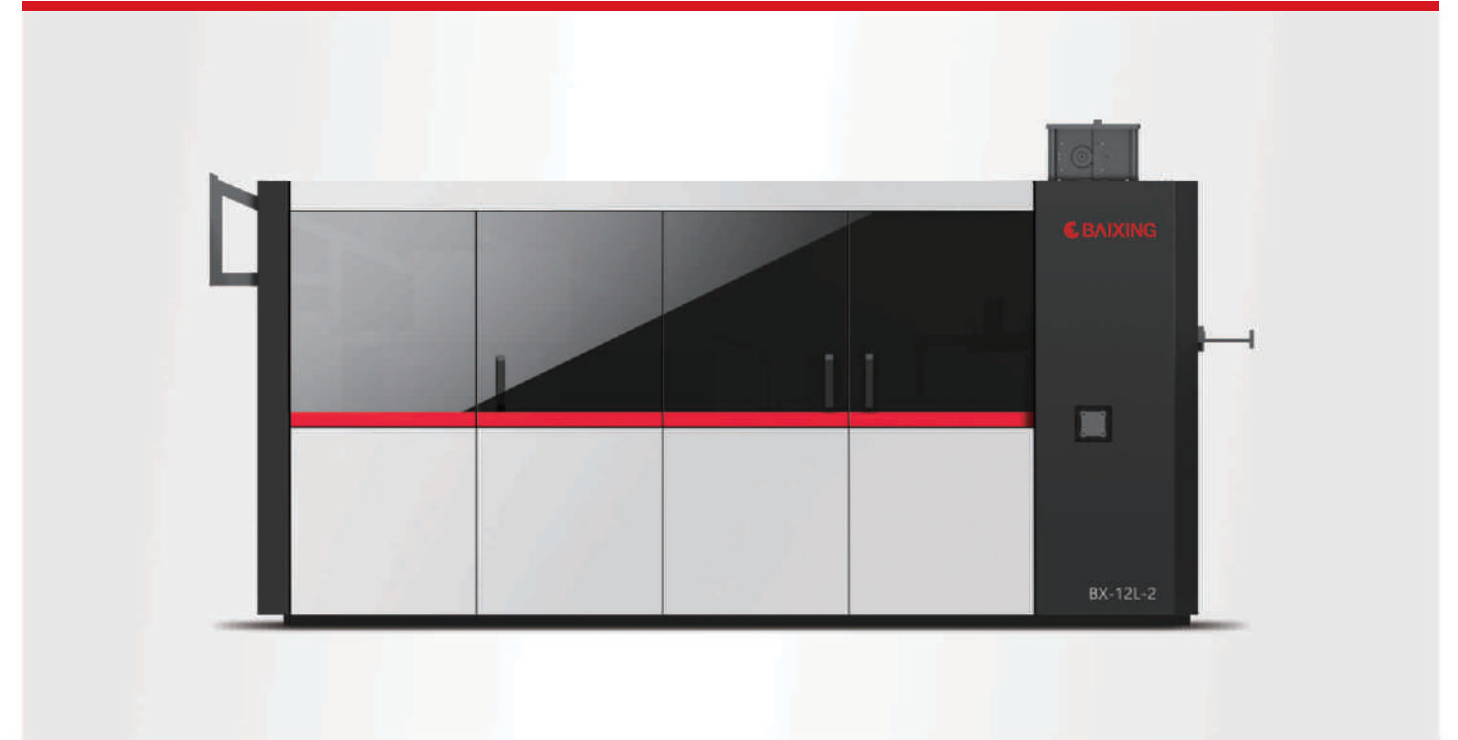
Reduced energy consumption helps you conserve resources  
Excellent process stability, especially for your light-weight bottles  
Low-maintenance design for maximum machine availability

FROM PET PREFORM TO BOTTLE  
PERFECT SHAPING OF LIGHT WEIGHT BOTTLES  
NO PARTING LINES, NO DISTORTION

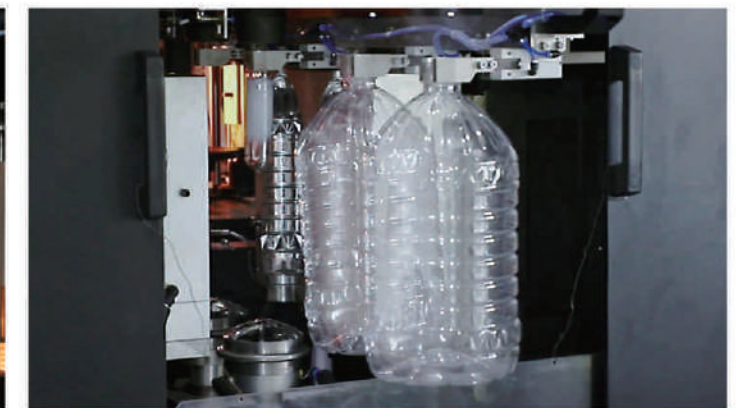
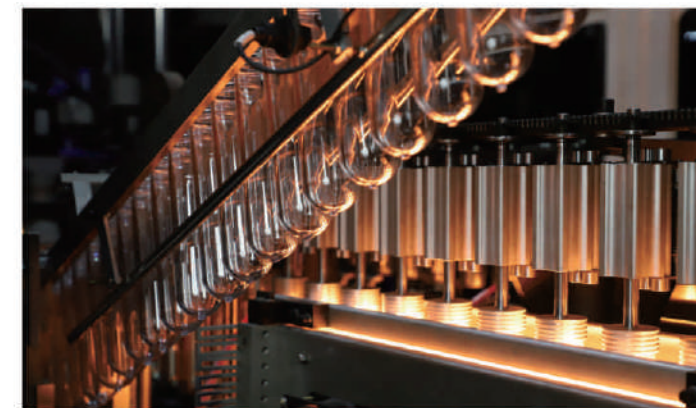


**► BX-12L-2**

Full-automatic Blow Moulding Machine  
全自动吹瓶机

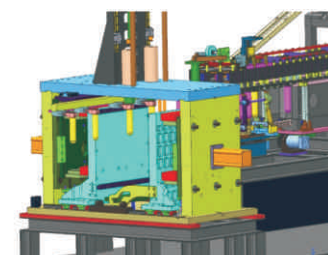


Features 特色

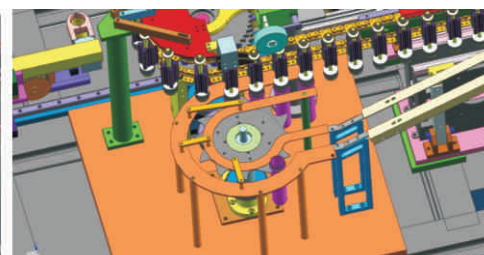


Features 特色

- ▶ 采用星轮式入胚
- ▶ 采用悬吊连续式集中加热
- ▶ 采用伺服气压动作
- ▶ 操作简便，动作稳定，节能环保
- ▶ Adopt star-wheel preform infeed
- ▶ Adopt preform hanging continuous heating system
- ▶ Adopt servo-pneumatic movement
- ▶ Simple Operation, Stable movement, Energy-Saving



合模 Mold



上料 Feeding

Container 技术参数

| General information |                           |        | BX-12L-2    |
|---------------------|---------------------------|--------|-------------|
| 理论产量                | Theoretical output        | Pcs/hr | 1100-1300   |
| 瓶子容积                | Container volume          | L      | 12L         |
| 瓶坯口径                | Preform inner diameter    | mm     | 65          |
| 最大瓶子直径              | Max.bottle diameter       | mm     | 230         |
| 最大瓶子高度              | Max.bottle height         | mm     | 450         |
| 模具腔数                | Cavity                    | Pc     | 2           |
| 主机尺寸                | Main machine size         | M      | 4.3x2.0x2.3 |
| 主机重量                | Machine weight            | T      | 4.5         |
| 上料机尺寸               | Feeding Machine dimension | M      | 2.3x1.4x2.5 |
| 上料机重量               | Feeding Machine weight    | T      | 0.3         |
| 最大加热功率              | Max.heating power         | KW     | 90          |
| 机器安装总电力             | Installation power        | KW     | 96          |



▶ All specifications and designs are subject to change without notice.  
以上数据可能不断研发改进，仅供参考，若有变更，恕不另行通知。

► **BX-S9-S BX-S6-S  
BX-S6-A BX-S4-S**  
Hydraulic And Servo Motor System  
Full-automatic Blow Moulding Machine  
油电全自动吹瓶机



**Features** 特色

- 采用伺服电机驱动开合模与底模联动结构；达到高速度、高精度、稳定、轻巧、节能、环保之效果。
- 伺服电机驱动步进和拉伸系统，极大地提高了吹瓶速度、灵活性、精确度。
- 高压吹气带有气源回收系统（气源回收率可达30%），可节约30kw/小时的耗电，可省去购买低压空压机的投资成本及节省占地空间，达到节能、环保效果。
- 模具定位安装，可在半个小时内轻易快速地完成模具更换。人机界面控制，操作简单，自动化程度高；机台面积小，节能占地空间。
- The servo motor is adopted to drive the molding mechanism, triggering off a bottom mold linkage as well. The whole mechanism works speedy, accurately, stably and flexibly. Meanwhile, it is energy efficient and environmental safe.
- The servo motor driven stepping system and stretching system have improved the speed, flexibility and accuracy of blowing
- The high pressure blowing system is also equipped with the gas recycling device (air recycling rate can be up to 30%) which may reduce power consumption as much as 30kw per hour. That means you do not need the low pressure air compressor any more which will minimize your investment as well as the space for placing the machine. In one word, it is energy-efficient and environmental safe.
- The simple slide-in way of mold mounting makes it possible for the operators to change molds easily within 30 minutes,
- The man-machine interface in highly automated and easy to operate. The compact machine occupies a smaller area.

Container\*技术参数

| General information |                        |        | BX-S9-S     | BX-S6-S     | BX-S6-A     | BX-S4-S     |
|---------------------|------------------------|--------|-------------|-------------|-------------|-------------|
| 理论产量                | Theoretical output     | Pcs/hr | 10000-11000 | 7000-8000   | 5000-6000   | 4000-5000   |
| 瓶子容积                | Container volume       | L      | 0.6         | 0.6         | 1.5         | 1.5         |
| 瓶坯口径                | Preform inner diameter | mm     | 18-38       | 18-38       | 18-38       | 18-38       |
| 最大瓶子直径              | Max.bottle diameter    | mm     | 68          | 68          | 90          | 90          |
| 最大瓶子高度              | Max.bottle height      | mm     | 240         | 240         | 320         | 320         |
| 模具腔数                | Cavity                 | Pc     | 9           | 6           | 6           | 4           |
| 主机尺寸                | Main machine size      | M      | 5.4x2.1x2.4 | 4.0x2.1x2.4 | 5.4x2.1x2.4 | 4.0x2.0x2.4 |
| 主机重量                | Machine weight         | T      | 7.0         | 6.5         | 7.0         | 5.5         |
| 最大加热功率              | Max.heating power      | KW     | 65          | 55          | 72          | 55          |
| 机器安装总电力             | Installation power     | KW     | 68          | 58          | 75          | 58          |

► All specifications and designs are subject to change without notice.  
以上数据可能不断研发改进，仅供参考，若有变更，恕不另行通知。

► **BX-S6 BX-S4-A BX-S4**  
Full-automatic Blow Moulding Machine  
全自动吹瓶机



**Features** 特色

- 采用台湾台达(DELTA)触摸屏电脑，性能稳定、操作简单；
- 选用德国费斯托(FESTO)及日本SMC气动元件；
- 采用节能型设计，机械部分结构紧凑、合理；
- 具有故障报警、诊断系统、使维修更加方便；
- 采用环保型设计、无毒输送带输送瓶坯。
- Features Touch screen computer of DELTA. Operate consistently and simply.
- Features pneumatic elements of German FESTO and Japan SMC.
- Specially designed for energy-saving purpose. Mechanical unit is compact and sound.
- Features trouble alarm and diagnostic units to allow easy maintenance.
- Environmentally friendly design. Nontoxic conveyor belt to carry preforms.



Container\*技术参数

| General information |                           |        | BX-S6        | BX-S4-A     | BX-S4          |
|---------------------|---------------------------|--------|--------------|-------------|----------------|
| 理论产量                | Theoretical output        | Pcs/hr | 5000-6000    | 3000-4000   | 3500-4000      |
| 瓶子容积                | Container volume          | L      | 0.6          | 2           | 0.65           |
| 瓶坯口径                | Preform inner diameter    | mm     | 38           | 38          | 38             |
| 最大瓶子直径              | Max.bottle diameter       | mm     | 68           | 105         | 70             |
| 最大瓶子高度              | Max.bottle height         | mm     | 240          | 350         | 240            |
| 模具腔数                | Cavity                    | Pc     | 6            | 4           | 4              |
| 主机尺寸                | Main machine size         | M      | 4.05x2.2x2.3 | 3.6x2.1x2.3 | 3.05x1.95x2.25 |
| 主机重量                | Machine weight            | T      | 3.6          | 3.3         | 2.8            |
| 上料机尺寸               | Feeding Machine dimension | M      | 2.65x1.2x3.1 | 2.1x1.3x2.5 | 2.1x1.3x2.5    |
| 上料机重量               | Feeding Machine weight    | T      | 0.4          | 0.25        | 0.25           |
| 最大加热功率              | Max.heating power         | KW     | 48           | 54          | 42             |
| 机器安装总电力             | Installation power        | KW     | 50           | 56          | 45             |

► All specifications and designs are subject to change without notice.  
以上数据可能不断研发改进，仅供参考，若有变更，恕不另行通知。

► **BX-5000A-2**  
Full-automatic Blow Moulding Machine  
全自动吹瓶机

► The air recovery system provides extra high recovery efficiency-up to 50%. The high pressure air exhausted after blowing is recovered to an air storage tank, which can be reused as an air-booster in low pressure situations. This eliminates the need for an additional low-pressure air compressor, saving equipment investment costs and energy consumption by up to 15%.



**Features** 特色

► 此机具有气体循环回收系统，回收效率高达50%，可将吹瓶完成后排除的高压气回收到储气罐，供增压机或低压系统使用，可省去订购低压空压设备，减少设备投资及电力消耗可达15%。



► **BX-5000A BX-10L-1**  
Full-automatic Blow Moulding Machine  
全自动吹瓶机



**Features** 特色

- 采用台湾台达(DELTA)触摸屏电脑，性能稳定、操作简单；
- 选用德国费斯托(FESTO)及日本SMC气动元件；
- 采用节能型设计，机械部分结构紧凑、合理；
- 具有故障报警、诊断系统、使维修更加方便；
- 采用环保型设计、无毒输送带输送瓶坯。
- Features Touch screen computer of DELTA. Operate consistently and simply.
- Features pneumatic elements of German FESTO and Japan SMC.
- Specially designed for energy-saving purpose. Mechanical unit is compact and sound.
- Features trouble alarm and diagnostic units to allow easy maintenance.
- Environmentally friendly design. Nontoxic conveyor belt to carry preforms.

• 可拉吹3L-6L之油瓶、1-5L大广口瓶及各种异型大容量瓶等。  
• BX-5000 automatic machine can blow bottles of different capacity, such as 1-5L bottle with wide-mouth, and 3L-6L edible oil bottle, etc.

Container 技术参数

| General information |                           |        | BX-5000A-2  | BX-5000A      | BX-10L-1    |
|---------------------|---------------------------|--------|-------------|---------------|-------------|
| 理论产量                | Theoretical output        | Pcs/hr | 1000-1300   | 500-700       | 500-650     |
| 瓶子容积                | Container volume          | L      | 5           | 5             | 10          |
| 瓶坯口径                | Preform inner diameter    | mm     | 60          | 120           | 65          |
| 最大瓶子直径              | Max. bottle diameter      | mm     | 200         | 200           | 220         |
| 最大瓶子高度              | Max. bottle height        | mm     | 350         | 350           | 450         |
| 模具腔数                | Cavity                    | Pc     | 2           | 1             | 1           |
| 主机尺寸                | Main machine size         | M      | 3.3x2.2x2.3 | 2.65x1.85x2.1 | 3.4x2.0x2.2 |
| 主机重量                | Machine weight            | T      | 3.0         | 2.3           | 3.0         |
| 上料机尺寸               | Feeding Machine dimension | M      | 2.1x1.4x2.5 | 2.1x1.4x2.5   | 2.3x1.4x2.5 |
| 上料机重量               | Feeding Machine weight    | T      | 0.3         | 0.25          | 0.3         |
| 最大加热功率              | Max. heating power        | KW     | 66          | 33            | 42          |
| 机器安装总电力             | Installation power        | KW     | 68          | 35            | 45          |

► All specifications and designs are subject to change without notice.  
以上数据可能不断研发改进，仅供参考，若有变更，恕不另行通知。

**▶ BX-20L-1 BX-20L-G**  
Full-automatic Blow Moulding Machine  
全自动吹瓶机



**Features** 特色

- ▶ 采用台湾台达 (DELTA) 触摸屏电脑, 性能稳定、操作简单
- ▶ 选用德国费斯托(FESTO)及日本SMC气动元件;
- ▶ 采用节能型设计, 机械部分结构紧凑、合理;
- ▶ 具有故障报警、诊断系统、使维修更加方便;
- ▶ 采用环保型设计、无毒输送带输送瓶坯。
- ▶ Features Touch screen computer of DELTA. Operate consistently and simply.
- ▶ Features pneumatic elements of German FESTO and Japan SMC.
- ▶ Specially designed for energy-saving purpose. Mechanical unit is compact and sound
- ▶ Features trouble alarm and diagnostic units to allow easy maintenance.
- ▶ Environmentally friendly design. Nontoxic conveyor belt to carry preforms.



Container \* 技术参数

| General information |                        |        | BX-20L-1    | BX-20L-G    |
|---------------------|------------------------|--------|-------------|-------------|
| 理论产量                | Theoretical output     | Pcs/hr | 350-450     | 180-200     |
| 瓶子容积                | Container volume       | L      | 20          | 20          |
| 瓶坯口径                | Preform inner diameter | mm     | 90          | 60          |
| 最大瓶子直径              | Max.bottle diameter    | mm     | 290         | 290         |
| 最大瓶子高度              | Max.bottle height      | mm     | 490         | 510         |
| 模具腔数                | Cavity                 | Pc     | 1           | 1           |
| 主机尺寸                | Main machine size      | M      | 3.8x1.9x2.6 | 3.8x1.9x2.5 |
| 主机重量                | Machine weight         | T      | 3.6         | 3.5         |
| 最大加热功率              | Max.heating power      | KW     | 53          | 55          |
| 机器安装总电力             | Installation power     | KW     | 55          | 56          |

▶ All specifications and designs are subject to change without notice.  
以上数据可能不断研发改进, 仅供参考, 若有变更, 恕不另行通知。

**▶ BX-S3 BX-S3-S**  
Full-automatic Blow Moulding Machine  
全自动吹瓶机



**Features** 特色

- ▶ 采用台湾台达 (DELTA) 触摸屏电脑, 性能稳定、操作简单;
- ▶ 选用德国费斯托(FESTO)及日本SMC气动元件;
- ▶ 采用节能型设计, 机械部分结构紧凑、合理;
- ▶ 具有故障报警、诊断系统、使维修更加方便;
- ▶ 采用环保型设计、无毒输送带输送瓶坯。
- ▶ Features Touch screen computer of DELTA. Operate consistently and simply.
- ▶ Features pneumatic elements of German FESTO and Japan SMC.
- ▶ Specially designed for energy-saving purpose. Mechanical unit is compact and sound.
- ▶ Features trouble alarm and diagnostic units to allow easy maintenance.
- ▶ Environmentally friendly design. Nontoxic conveyor belt to carry preforms.



Container \* 技术参数

| General information |                           |        | BX-S3       | BX-S3-S     |
|---------------------|---------------------------|--------|-------------|-------------|
| 理论产量                | Theoretical output        | Pcs/hr | 2700-3200   | 3000-3600   |
| 瓶子容积                | Container volume          | L      | 0.6         | 0.6         |
| 瓶坯口径                | Preform inner diameter    | mm     | 38          | 38          |
| 最大瓶子直径              | Max.bottle diameter       | mm     | 68          | 68          |
| 最大瓶子高度              | Max.bottle height         | mm     | 240         | 240         |
| 模具腔数                | Cavity                    | Pc     | 3           | 3           |
| 主机尺寸                | Main machine size         | M      | 2.0x2.1x2.3 | 3.2x2.1x2.3 |
| 主机重量                | Machine weight            | T      | 2.0         | 2.8         |
| 上料机尺寸               | Feeding Machine dimension | M      | 2.4x1.6x1.8 | 2.4x1.6x1.8 |
| 上料机重量               | Feeding Machine weight    | T      | 0.25        | 0.25        |
| 最大加热功率              | Max.heating power         | KW     | 24          | 30          |
| 机器安装总电力             | Installation power        | KW     | 25          | 35          |

▶ All specifications and designs are subject to change without notice.  
以上数据可能不断研发改进, 仅供参考, 若有变更, 恕不另行通知。

► **BX-S2-A**

Full-automatic Blow Moulding Machine  
全自动吹瓶机



Features 特色

- ▶ 采用台湾台达 (DELTA) 触摸屏电脑, 性能稳定、操作简单
- ▶ 选用德国费斯托 (FESTO) 及日本 SMC 气动元件;
- ▶ 采用节能型设计, 机械部分结构紧凑、合理;
- ▶ 具有故障报警、诊断系统、使维修更加方便;
- ▶ 采用环保型设计、无毒输送带输送瓶坯。
- ▶ Features Touch screen computer of DELTA. Operate consistently and simply.
- ▶ Features pneumatic elements of German FESTO and Japan SMC.
- ▶ Specially designed for energy-saving purpose. Mechanical unit is compact and sound
- ▶ Features trouble alarm and diagnostic units to allow easy maintenance.
- ▶ Environmentally friendly design. Nontoxic conveyor belt to carry preforms.



► **BX-S2 BX-1500A BX-1500A2**

Full-automatic Blow Moulding Machine  
全自动吹瓶机



Features 特色

- ▶ 采用台湾台达 (DELTA) 触摸屏电脑, 性能稳定、操作简单;
- ▶ 选用德国费斯托 (FESTO) 及日本 SMC 气动元件;
- ▶ 采用节能型设计, 机械部分结构紧凑、合理;
- ▶ 具有故障报警、诊断系统、使维修更加方便;
- ▶ 采用环保型设计、无毒输送带输送瓶坯。
- ▶ Features Touch screen computer of DELTA. Operate consistently and simply.
- ▶ Features pneumatic elements of German FESTO and Japan SMC.
- ▶ Specially designed for energy-saving purpose. Mechanical unit is compact and sound.
- ▶ Features trouble alarm and diagnostic units to allow easy maintenance.
- ▶ Environmentally friendly design. Nontoxic conveyor belt to carry preforms.



Container \* 技术参数

| General information |                           |        | BX-S2-A       | BX-S2        | BX-1500A    | BX-1500A2   |
|---------------------|---------------------------|--------|---------------|--------------|-------------|-------------|
| 理论产量                | Theoretical output        | Pcs/hr | 1400-2000     | 1500-2000    | 800-1200    | 1400-2000   |
| 瓶子容积                | Container volume          | L      | 2             | 1            | 1.5         | 2.0         |
| 瓶坯口径                | Preform inner diameter    | mm     | 60            | 45           | 85          | 45          |
| 最大瓶子直径              | Max.bottle diameter       | mm     | 105           | 85           | 110         | 105         |
| 最大瓶子高度              | Max.bottle height         | mm     | 350           | 280          | 350         | 350         |
| 模具腔数                | Cavity                    | Pc     | 2             | 2            | 1           | 2           |
| 主机尺寸                | Main machine size         | M      | 3.1x1.75x2.25 | 2.4x1.73x1.9 | 2.4x1.6x1.8 | 3.1x2.0x2.1 |
| 主机重量                | Machine weight            | T      | 2.2           | 1.8          | 1.5         | 2.5         |
| 上料机尺寸               | Feeding Machine dimension | M      | 2.5x1.4x2.5   | 2.1x1.0x2.5  | 2.0x1.1x2.2 | 2.3x1.4x2.3 |
| 上料机重量               | Feeding Machine weight    | T      | 0.25          | 0.25         | 0.25        | 0.25        |
| 最大加热功率              | Max.heating power         | KW     | 27            | 21           | 24          | 33          |
| 机器安装总电力             | Installation power        | KW     | 29            | 22           | 25          | 36          |

▶ All specifications and designs are subject to change without notice.  
以上数据可能不断研发改进, 仅供参考, 若有变更, 恕不另行通知。



▶ **BX-2500 BX-5000**

Hand feeding  
Preform Automatic  
Blow Moulding Machine  
手插瓶坯自动吹瓶机



**Features** 特色

- 此型号机器专门用于吹制PET大广口瓶子。手动上瓶坯，自动吹瓶和取瓶，操作人员无需技术培训理论，产量高达800-1000个每小时，成本低，性能稳定。
- This model can blow big mouth PET jars. Preforms fed by hands and bottles heated, blowed and come out automatically; no technical requiremen from the worker; hourly capacity from 800-100pcs; lower cost than usual automatic machines and while enjoying stable performance.



Container\*技术参数

| General information |                        |        | BX-2500       | BX-5000      |
|---------------------|------------------------|--------|---------------|--------------|
| 理论产量                | Theoretical output     | Pcs/hr | 800-1000      | 500-700      |
| 瓶子容积                | Container volume       | L      | 2.5           | 5            |
| 瓶坯口径                | Preform inner diameter | mm     | 110           | 140          |
| 最大瓶子直径              | Max.bottle diameter    | mm     | 140           | 200          |
| 最大瓶子高度              | Max.bottle height      | mm     | 320           | 350          |
| 模具腔数                | Cavity                 | Pc     | 1             | 1            |
| 主机尺寸                | Main machine size      | M      | 2.65x1.85x1.8 | 2.7x1.75x2.0 |
| 主机重量                | Machine weight         | T      | 1.5           | 2.0          |
| 最大加热功率              | Max.heating power      | KW     | 24            | 33           |
| 机器安装总电力             | Installation power     | KW     | 25            | 34           |

▶ All specifications and designs are subject to change without notice.  
以上数据可能不断研发改进，仅供参考，若有变更，恕不另行通知。

▶ **BX-600 BX-1500**  
**BX-S1 BX-S1-A**  
**BX-S3-0.3**

Hand feeding  
Preform Automatic  
Blow Moulding Machine  
手插瓶坯自动吹瓶机



**Features** 特色

- 此型号可吹PET碳酸饮料瓶、矿泉水、农药瓶、化妆品瓶及广口瓶
- 手动上瓶坯，自动吹瓶，操作人员无需技术培训理论，产量高达1400-2000个每小时，成本低，性能稳定。
- This model could blow normal PET bottles as well as wide-mouth bottles.
- Advantages: preforms fed by hand and bottles heated and blowed automatically; no technical requirement from this worker; hourly capacity from 1400 to 2000pcs; lower cost than usual automatic machines while enjoying stable performance.



Container\*技术参数

| General information |                        |        | BX-600       | BX-1500      | BX-S1         | BX-S1-A     | BX-S3-0.3   |
|---------------------|------------------------|--------|--------------|--------------|---------------|-------------|-------------|
| 理论产量                | Theoretical output     | Pcs/hr | 1000-1300    | 800-1200     | 1400-2000     | 1200-1800   | 2000-2500   |
| 瓶子容积                | Container volume       | L      | 0.6          | 1.5          | 1             | 2           | 0.3         |
| 瓶坯口径                | Preform inner diameter | mm     | 65           | 85           | 65            | 85          | 38          |
| 最大瓶子直径              | Max.bottle diameter    | mm     | 85           | 110          | 85            | 105         | 60          |
| 最大瓶子高度              | Max.bottle height      | mm     | 280          | 350          | 280           | 350         | 170         |
| 模具腔数                | Cavity                 | Pc     | 1            | 1            | 2             | 2           | 3           |
| 主机尺寸                | Main machine size      | M      | 2.2x1.65x1.8 | 2.4x1.85x1.9 | 2.53x1.8x1.85 | 3.1x1.9x2.0 | 2.7x1.8x2.0 |
| 主机重量                | Machine weight         | T      | 1.3          | 1.5          | 1.7           | 2.0         | 1.8         |
| 最大加热功率              | Max.heating power      | KW     | 18           | 24           | 21            | 28          | 28          |
| 机器安装总电力             | Installation power     | KW     | 19           | 25           | 21.5          | 30          | 29          |

▶ All specifications and designs are subject to change without notice.  
以上数据可能不断研发改进，仅供参考，若有变更，恕不另行通知。

## SEMI-AUTOMATIC BLOW MOLDING MACHINE

### 半自动吹瓶机系列

- Adopt special electronically controlled loop design while heating lamps; high efficiency in simultaneous controlling one lamp or large quantities; lower power consumption.
- Adopt heat transfer and feedback theory to decide the shape and thickness of bottle embryo.
- Heating furnace is always under stable temperature. The embryo will be heated evenly, not be influenced by outside environment.
- Air circuit system consists of movement and blowing so as to meet the needs of different air pressure, also to provide stable high voltage for blowing different shapes of big bottles.
- The system is equipped with silencer, connecting rod and articulated refueling devices.
- Two modes of operation: automatic mode and semi-automatic mode.
- Small, low investment, one person enough, easy to use and safe.
- Cooling system with cold air circulating ensures same heat exposure of inner and outer of the bottles.

- 采用特殊电控回路设计灯管加热,可单支或多支同步控制效率高,降低耗电功率。
- 应用传热分析及反馈理论依瓶胚外型,薄厚设定,加热箱保持恒温。
- 瓶胚不受外在环境因素干扰,均匀受热。
- 气路系统分为动作和吹气两部分,以满足动作、吹瓶不同气压的需求,并提供稳定的高压来吹制异形的大容积瓶。
- 系统装有消声器及连杆、曲臂加油装置。
- 操作分为点动和半自动两种模式。
- 体积小,投资少,一人操作,简单安全。
- 冷风空气循环冷却系统,能保证瓶坯内外壁加热一致性。



### BX-D1



|                                       |     |                |
|---------------------------------------|-----|----------------|
| 最大容量 Max.container volume             | L   | 20             |
| 理论产量 Theoretical output               | Bph | 60-90          |
| 最大口径 Max.neck diameter                | mm  | 150            |
| 最大直径 Max.container diameter           | mm  | 300            |
| 最大高度 Max.container height             | mm  | 470            |
| 最大模厚 Max.mould thickness              | mm  | 200-350        |
| 开模行程 Mould opening stroke(Adjustable) | mm  | 350            |
| 主机尺寸 Machine dimension(L*W*H)         | m   | 2.2x0.8x1.9    |
| 主机重量 Machine weight                   | kg  | 1350           |
| 加热器尺寸 Heater dimension(L*W*H)         | m   | 2.35x0.65x1.65 |
| 加热器重量 Heater weight                   | kg  | 350            |
| 最大加热功率 Max.heating power              | KW  | 25             |
| 机器安装总电力 Installation power            | KW  | 27             |



### BX-D2



|                                       |     |              |
|---------------------------------------|-----|--------------|
| 最大容量 Max.container volume             | L   | 20           |
| 理论产量 Theoretical output               | Bph | 150-250      |
| 最大口径 Max.neck diameter                | mm  | 180          |
| 最大直径 Max.container diameter           | mm  | 300          |
| 最大高度 Max.container height             | mm  | 470          |
| 最大模厚 Max.mould thickness              | mm  | 200-350      |
| 开模行程 Mould opening stroke(Adjustable) | mm  | 350          |
| 主机尺寸 Machine dimension(L*W*H)         | m   | 2.2x0.8x1.9  |
| 主机重量 Machine weight                   | kg  | 1350         |
| 加热器尺寸 Heater dimension(L*W*H)         | m   | 2.4x0.75x1.6 |
| 加热器重量 Heater weight                   | kg  | 350          |
| 最大加热功率 Max.heating power              | KW  | 28           |
| 机器安装总电力 Installation power            | KW  | 30           |



### BX-C



|                                       |     |                |
|---------------------------------------|-----|----------------|
| 最大容量 Max.container volume             | L   | 6              |
| 理论产量 Theoretical output               | Bph | 350-500        |
| 最大口径 Max.neck diameter                | mm  | 120            |
| 最大直径 Max.container diameter           | mm  | 200            |
| 最大高度 Max.container height             | mm  | 350            |
| 最大模厚 Max.mould thickness              | mm  | 170-280        |
| 开模行程 Mould opening stroke(Adjustable) | mm  | 230            |
| 主机尺寸 Machine dimension(L*W*H)         | m   | 1.67x0.62x1.65 |
| 主机重量 Machine weight                   | kg  | 750            |
| 加热器尺寸 Heater dimension(L*W*H)         | m   | 1.72x0.6x1.37  |
| 加热器重量 Heater weight                   | kg  | 230            |
| 最大加热功率 Max.heating power              | KW  | 14             |
| 机器安装总电力 Installation power            | KW  | 15             |



### BX-CA



|                                       |     |                |
|---------------------------------------|-----|----------------|
| 最大容量 Max.container volume             | L   | 5              |
| 理论产量 Theoretical output               | Bph | 400-600        |
| 最大口径 Max.neck diameter                | mm  | 130            |
| 最大直径 Max.container diameter           | mm  | 200            |
| 最大高度 Max.container height             | mm  | 350            |
| 最大模厚 Max.mould thickness              | mm  | 170-280        |
| 开模行程 Mould opening stroke(Adjustable) | mm  | 230            |
| 主机尺寸 Machine dimension(L*W*H)         | m   | 1.67x0.62x1.65 |
| 主机重量 Machine weight                   | kg  | 750            |
| 加热器尺寸 Heater dimension(L*W*H)         | m   | 1.73x0.66x1.35 |
| 加热器重量 Heater weight                   | kg  | 230            |
| 最大加热功率 Max.heating power              | KW  | 14             |
| 机器安装总电力 Installation power            | KW  | 15             |



### BX-B



|                                       |     |               |
|---------------------------------------|-----|---------------|
| 最大容量 Max.container volume             | L   | 2.5           |
| 理论产量 Theoretical output               | Bph | 800-1200      |
| 最大口径 Max.neck diameter                | mm  | 80            |
| 最大直径 Max.container diameter           | mm  | 120           |
| 最大高度 Max.container height             | mm  | 380           |
| 最大模厚 Max.mould thickness              | mm  | 110-230       |
| 开模行程 Mould opening stroke(Adjustable) | mm  | 160           |
| 主机尺寸 Machine dimension(L*W*H)         | m   | 1.4x0.62x1.6  |
| 主机重量 Machine weight                   | kg  | 650           |
| 加热器尺寸 Heater dimension(L*W*H)         | m   | 1.72x0.6x1.37 |
| 加热器重量 Heater weight                   | kg  | 230           |
| 最大加热功率 Max.heating power              | KW  | 14            |
| 机器安装总电力 Installation power            | KW  | 15            |



### BX-E



|                                       |     |                |
|---------------------------------------|-----|----------------|
| 最大容量 Max.container volume             | L   | 1.5            |
| 理论产量 Theoretical output               | Bph | 1000-1600      |
| 最大口径 Max.neck diameter                | mm  | 38             |
| 最大直径 Max.container diameter           | mm  | 95             |
| 最大高度 Max.container height             | mm  | 350            |
| 最大模厚 Max.mould thickness              | mm  | 230            |
| 开模行程 Mould opening stroke(Adjustable) | mm  | 160            |
| 主机尺寸 Machine dimension(L*W*H)         | m   | 1.4x0.62x1.9   |
| 主机重量 Machine weight                   | kg  | 650            |
| 加热器尺寸 Heater dimension(L*W*H)         | m   | 3.98x0.67x1.52 |
| 加热器重量 Heater weight                   | kg  | 550            |
| 最大加热功率 Max.heating power              | KW  | 45             |
| 机器安装总电力 Installation power            | KW  | 48             |



### BX-B2



|                                       |     |                |
|---------------------------------------|-----|----------------|
| 最大容量 Max.container volume             | L   | 1.5            |
| 理论产量 Theoretical output               | Bph | 1600-2200      |
| 最大口径 Max.neck diameter                | mm  | 70             |
| 最大直径 Max.container diameter           | mm  | 110            |
| 最大高度 Max.container height             | mm  | 320            |
| 最大模厚 Max.mould thickness              | mm  | 110-210        |
| 开模行程 Mould opening stroke(Adjustable) | mm  | 160            |
| 主机尺寸 Machine dimension(L*W*H)         | m   | 1.4x0.62x1.6x2 |
| 主机重量 Machine weight                   | kg  | 650x2          |
| 加热器尺寸 Heater dimension(L*W*H)         | m   | 1.72x0.6x1.37  |
| 加热器重量 Heater weight                   | kg  | 230            |
| 最大加热功率 Max.heating power              | KW  | 14             |
| 机器安装总电力 Installation power            | KW  | 16             |



### BX-G



|                                       |     |               |
|---------------------------------------|-----|---------------|
| 最大容量 Max.container volume             | L   | 1.5           |
| 理论产量 Theoretical output               | Bph | 1000-1200     |
| 最大口径 Max.neck diameter                | mm  | 38            |
| 最大直径 Max.container diameter           | mm  | 100           |
| 最大高度 Max.container height             | mm  | 310           |
| 最大模厚 Max.mould thickness              | mm  | 110-230       |
| 开模行程 Mould opening stroke(Adjustable) | mm  | 160           |
| 主机尺寸 Machine dimension(L*W*H)         | m   | 1.45x0.62x2.0 |
| 主机重量 Machine weight                   | kg  | 650x2         |
| 加热器尺寸 Heater dimension(L*W*H)         | m   | 1.72x0.6x1.37 |
| 加热器重量 Heater weight                   | kg  | 230           |
| 最大加热功率 Max.heating power              | KW  | 16.8          |
| 机器安装总电力 Installation power            | KW  | 18            |



### BX-A



|                                       |     |              |
|---------------------------------------|-----|--------------|
| 最大容量 Max.container volume             | L   | 1.5          |
| 理论产量 Theoretical output               | Bph | 800-1000     |
| 最大口径 Max.neck diameter                | mm  | 70           |
| 最大直径 Max.container diameter           | mm  | 110          |
| 最大高度 Max.container height             | mm  | 310          |
| 最大模厚 Max.mould thickness              | mm  | 110-220      |
| 开模行程 Mould opening stroke(Adjustable) | mm  | 160          |
| 主机尺寸 Machine dimension(L*W*H)         | m   | 1.4x0.62x1.6 |
| 主机重量 Machine weight                   | kg  | 650          |
| 加热器尺寸 Heater dimension(L*W*H)         | m   | 1.1x0.6x1.1  |
| 加热器重量 Heater weight                   | kg  | 150          |
| 最大加热功率 Max.heating power              | KW  | 3.6          |
| 机器安装总电力 Installation power            | KW  | 4            |

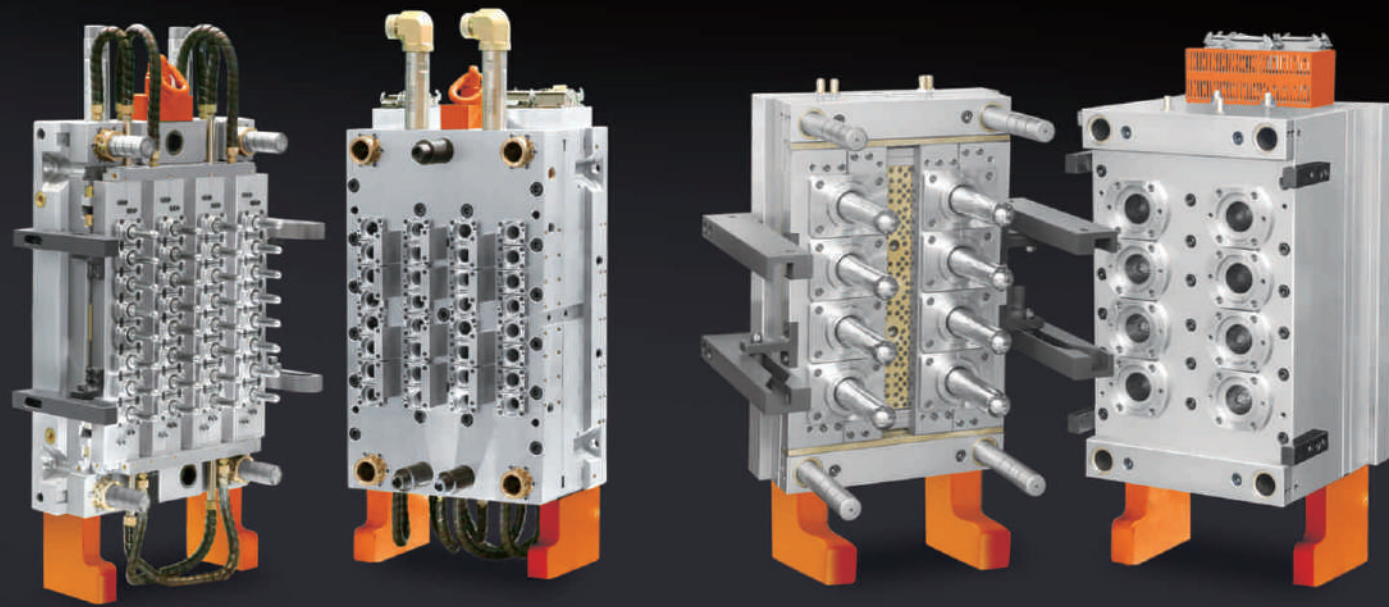
► All specifications and designs are subject to change without notice.  
以上数据可能不断研发改进，仅供参考，若有变更，恕不另行通知。



## Preform Moulds 瓶坯模具

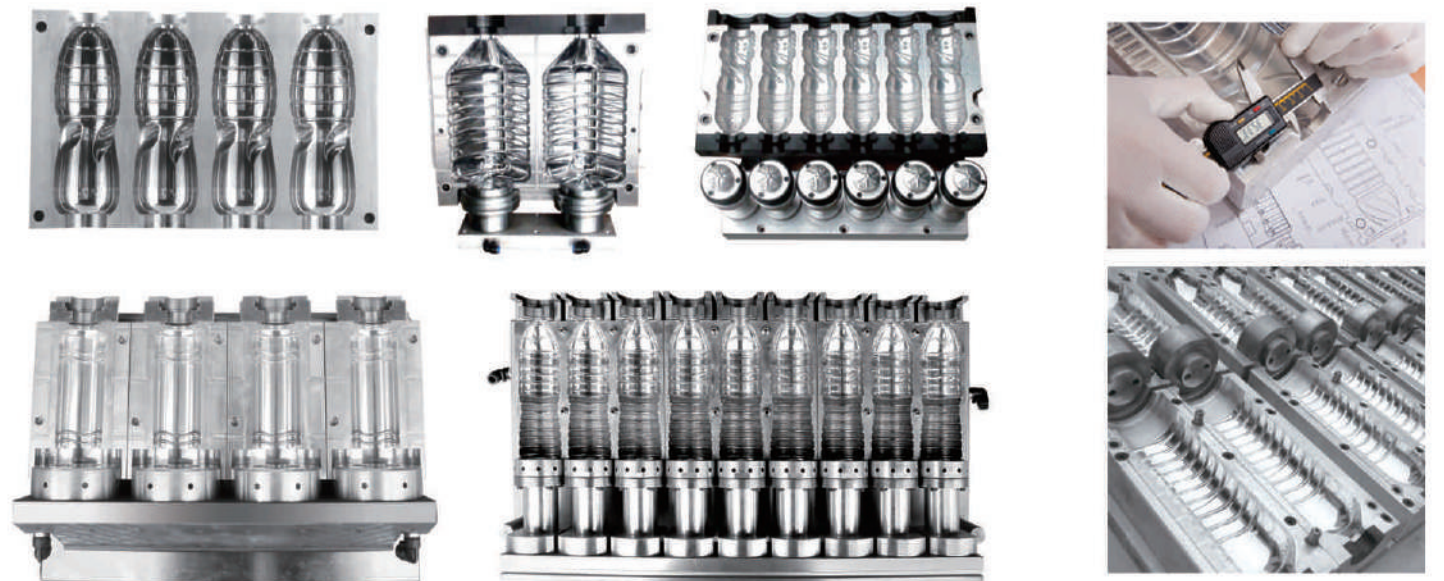
- Mold cavity from 1 up to 72.
- Electric control system with simulating stretch testing improve yield rate.
- Adopt world advanced dipole taper localization technique, each cavity self-clamp independently, ensure mould concentricity.
- The material of mould die core and die cavity are made of Sweden special mould steel.
- International standard screw neck, imported nitrogen steel with high hardness is of long usage.
- Advanced hot runner design and even heating temperature make sure the high quality of plastic products.
- Valve gated type without tail reduces labor force.
- At least 3 million guarantee.

- 瓶坯腔数从一出到一出72。
- 瓶坯采用电脑模拟拉伸测试设计，提高吹瓶的成品率。
- 采用世界先进的二级双锥度定位技术，每腔独立自锁，确保模具同心度。
- 模具注腔、注芯选用瑞典原厂预处理优质专用模具钢制造。
- 螺纹口按国际标准制造，材料选用进口氮化刚，硬度高，使用寿命长。
- 热流道设计先进，加热温度均匀，提高了塑料制品质量。
- 免剪浇口，降低了工人劳动强度。
- 模具寿命保证在300万模次以上。



## Blow Moulds 吹瓶模具

- We employ state-of-the-art CDC/CAM technologies to design and build high-quality tooling
- We supply blow mould by customer's demand for an increasing variety of markets applications ranging over wide-mouth jars, cosmetic and detergent bottles, pharmaceutical bottles, soya sauce and edible oil bottles, double seam can, bottled water, heat-resistant bottles, and CSD bottles.
- 采用3D电脑绘图设计，能依客户要求制作各种吹瓶模具如5加仑、广口瓶、洗发水、药瓶、酱油瓶、PET易拉罐、热罐装、碳酸饮料瓶等模具。
- 可配合客户共同开发设计制造。



## Cap Moulds 瓶盖模具

- 百星可配合客户需求，依各式瓶口设计及制造，适合各种规格的瓶盖模具
- We have significant experience in the manufacture of cap moulds for different types of closures by customer's demand.



## PET Preform Injection Molding System

### 高速PET注胚系统

- 与大多数只冷却瓶坯外表面的后期模具冷却系统不同，它能够在不使用高压气体的情况下冷却瓶坯的内表面
- 优化的周期利用率—冷却系统安装在动模板上，确保在整个周期的85%时间内都保持有效状态
- 注坯系统注塑能力从280吨到500吨(2800千牛到5000千牛)，最多可以注塑96腔瓶坯模具。
- Cooling the inner surface of the preform without using the high pressure compressed air, unlike most post-mold cooling systems which only cool the outer surface
- Optimized cycle utilization —being mounted on the moving platen, the cooling system remains active within 85% of the overall cycle-time.
- Capacity of PET injection molding system is from 280 to 500 tonnes(2800KN to 5000KN), and it is available for the preform mould maximum with 96 cavities



干燥机  
Plastics Dryer

冷水机  
Water chiller

模温机  
Mould temperature controller

粉碎机  
Crusher

立式混色机  
Vertical mixed color machine

For more details, pls visit: [www.tzbaixing.com](http://www.tzbaixing.com)  
We offer you not only a blow molding machine, but also a fine solution.....



全自动瓶盖成型机  
Auto Cap Compression Molding System

全自动瓶盖折边切口一体机  
Auto Cap Folding-Cutting Machine

全自动瓶盖内垫模压成型机 (滴塑机)  
Auto Cap Lining Machine



高温冷干机  
Air dryer

储气罐  
Air tank

油水分离器  
Oil and water separator

过滤器  
Air filter

螺杆机  
Screw Air Compressor

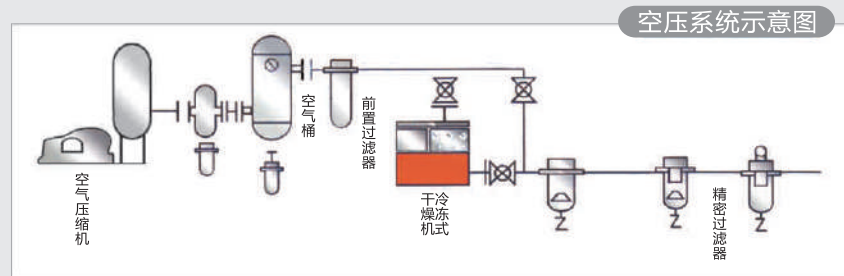
瓶口结晶器  
Crystallizing machine

#### Screw Air Compressor\* 螺杆空压机技术参数

| MODEL  | 排气量Flow(m³/min) |        |        |        | 尺寸L*W*H(m)     |
|--------|-----------------|--------|--------|--------|----------------|
|        | 0.7mpa          | 0.8mpa | 1.0mpa | 1.2mpa |                |
| 15kw   | 2.5             | 2.3    | 2.1    | 1.8    | 1.45x1.35x1.45 |
| 18.5kw | 3.1             | 2.9    | 2.6    | 2.2    | 1.60x1.35x1.45 |
| 22kw   | 3.7             | 3.5    | 3.1    | 2.9    | 1.60x1.35x1.75 |
| 30kw   | 5.3             | 5.0    | 4.6    | 3.9    | 1.60x1.35x1.75 |
| 37kw   | 6.7             | 6.2    | 5.7    | 5.0    | 1.80x1.55x1.85 |
| 45kw   | 7.2             | 7.0    | 6.2    | 5.7    | 1.80x1.55x1.85 |
| 55kw   | 10.0            | 9.1    | 8.2    | 7.4    | 2.10x1.80x1.85 |

► All specifications and designs are subject to change without notice.  
以上数据可能不断研发改进，仅供参考，若有变更，恕不另行通知。

## 空压机系列 AIR COMPRESSOR



高压空压机  
High Pressure  
Air Compressor



高压空压机  
High Pressure  
Air Compressor



高压空压机  
High Pressure  
Air Compressor



低压空压机  
Low Pressure  
Air Compressor

### High Pressure Air Compressor 高压空压机技术参数

| MODEL     | 排气量Flow(m³/min) | 功率Power(KW) | 工作压力Pressure(Mpa) | 储气罐Air tank(m³) | 尺寸LxWxH(m)    |
|-----------|-----------------|-------------|-------------------|-----------------|---------------|
| 0.63/30   | 0.63            | 7.5         | 3.0               | 0.19            | 1.65X0.7X1.35 |
| 1.0/30    | 1.0             | 11          | 3.0               | 0.15            | 1.9X0.9X1.3   |
| 1.2/30    | 1.2             | 15          | 3.0               | 0.15            | 1.9X0.9X1.3   |
| 1.6/30-40 | 1.6             | 18.5        | 3.0/4.0           | No              | 1.25X1.05X1.7 |
| 2.0/30-40 | 2.0             | 11x2        | 3.0/4.0           | No              | 2.0X1.65X1.35 |
| 2.4/30    | 2.4             | 15x2        | 3.0               | No              | 2.0X1.65X1.35 |
| 3.2/30-40 | 3.2             | 18.5x2      | 3.0/4.0           | No              | 2.7X1.1X2.0   |
| 4.8/30-40 | 4.8             | 18.5x3      | 3.0/4.0           | No              | 4.0X1.05X1.8  |
| 6.0/30-40 | 6.0             | 22x3        | 3.0/4.0           | No              | 6.5X1.25X1.65 |
| 6.4/30-40 | 6.4             | 18.5x4      | 3.0/4.0           | NO              | 6.3X1.2X2.0   |

►All specifications and designs are subject to change without notice.  
以上数据可能不断研发改进, 仅供参考, 若有变更, 恕不另行通知。

### Low Pressure Air Compressor 低压空压机技术参数

| MODEL     | 排气量Flow(m³/min) | 功率Power(KW) | 工作压力Pressure(Mpa) | 储气罐Air tank(m³) | 尺寸LxWxH(m)    |
|-----------|-----------------|-------------|-------------------|-----------------|---------------|
| 1.0/10    | 1.0             | 7.5         | 1.0               | 0.19            | 1.8x0.85x0.65 |
| 1.6/10    | 1.6             | 11          | 1.0               | 0.30            | 2.0x1.05x1.9  |
| 2.0/10-12 | 2.0             | 15          | 1.0/1.2           | 0.36            | 2.0x1.05x1.9  |
| 3.0/10-12 | 3.0             | 22          | 1.0/1.2           | 0.45            | 2.1x1.1x1.9   |
| 4.0/10-12 | 4.0             | 15x2        | 1.0/1.2           | 0.48            | 2.3x2.1x1.9   |

►All specifications and designs are subject to change without notice.  
以上数据可能不断研发改进, 仅供参考, 若有变更, 恕不另行通知。

专业, 来自细节的把握  
**Striving for excellence**  
Providing complete blow molding strategy  
according to clients requirement



百星一直以来重视产品的完美品质, 作为自动吹瓶机械的倡导者, 百星在研发和科技环节的投入是巨大的, 这种投入的回报, 使百星掌握了多项在吹瓶机械行业堪称独创的关键技术和工艺, 走在行业的前列, 不断优化升级的产品配置为消费者带来稳定、耐用、自动化的机械。

- 可根据客户要求配进口FESTO及各种国际名牌气缸、电磁阀和电脑控制系统等气动元件。
- Can select to configure with FESTO and other world famous brand air cylinder, electro-valve pneumatic parts and so on.



- After Sales Service is one of the most important function in BAIXING
- We strive for the customer satisfaction,
- Work whole-heartedly and provide efficient service to our customers.

- 百星机械的售后服务以客户是否满意为工作标准,
- 以全心全意为客户服务为工作职责,
- 以高效快捷周到的服务为工作目标。

For more details, pls visit: [www.tzbaixing.com](http://www.tzbaixing.com)

