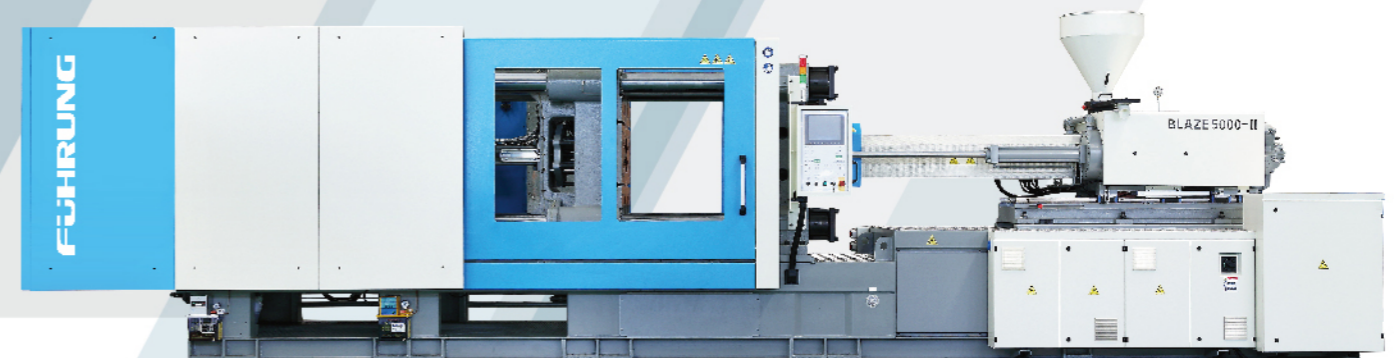


BLAZE-II Series

我们的核心宗旨 —— 量身定做 our corner stone – custom-made



Further
Information



FUHRUNG[®]

力维机械科技有限公司
LEADWAY MACHINERY TECHNOLOGY CO.,LTD

地址: 宁波市北仑区戚家山街道林唐东362号
ADD: No.362 Lintang East, Qijiashan Street,
Beilun District, Ningbo, China

邮编 (P.C): 315803
电话 (Tel): +86 574 8307 5287
传真 (Fax): +86 574 8307 5285
E-mail: sales@leadwaytech.cn

力维机械科技有限公司
LEADWAY MACHINERY TECHNOLOGY CO.,LTD

ISO:9001 CE TÜV ICS

FÜHRUNG MACHINERY



领先的科技 Leading Technology

2006~2010 期间,力维是一支为欧洲知名品牌注塑机代工的团队,多年的代工经验使得力维在制造高品质、高效、安全的机器方面获得了核心的技术,以此造就了力维在技术方面的领先 优势。

From 2006 to 2010. LEADWAY was an OEM team for EUROPEAN machines; years of OEM experience made LEADWAY controlled the core technology on high quality, high safety machine manufacturing, thus made our advantage on leading technology.

经验丰富、高效的团队 Experienced & Efficient Team

从代工到自主品牌经营,力维深知团队力量之于品牌的重要性,因此,力维的各个部门均由业内资深人员把关,这些人员的经验均在 15 年以上;各部门之间及时、友好的沟通,快速传达 客户的意见,商谈设计及安装的改进。

From OEM to independent brand business, LEADWAY deeply realized the importance of the team for a brand; the LEADWAY team is composed of experienced staff, whose average experience more than 15 years in this filed; and all of departments keep timely and friendly communication for customers suggestions, discuss the improvement of design and installation.

精密、可靠的机器 Accurate & Reliable Machinery

我们对品质的把控不仅仅是局限于单个零配件的质量,在安装过程中我们会模拟机器的实际运行情况来检测零件之间的配合精度;成功获得德国莱茵(TUV)CE 认证,进一步以确保力维机器的可靠性

We control the quality not only check each single piece of spare part, but also simulate machine's actual working to check each spare part's fit precision during our installation, ensure our machines' best precision; thanks to the cooperation with the TUV Rheinland, ensure our machines' reliability.

不断的创新、持续的研发 Developmental Innovation & Research

随着人们对塑料制品和数量的需求不断提高,注塑工厂对机器的要求也越来越高,力维在精密、节能、高效、安全、特殊材料成型等领域保持不断的创新和研发。

With the increasing demands of plastic quality and quantity, injection molding factories required machines higher and higher, LEADWAY keeps the developmental innovation and research on precision, efficiency safety and special material injection molding.

全球 7 天 24 小时服务 World-wide 7 x 24 Service

自创立自主品牌以来短短的几年时间,力维在全球已经有 20 多个国际服务网点;力维不仅仅在亚洲、美洲、非洲等市场拥有服务网点;同时在向来以严格著称的欧洲市场拥有营销、服务中心,确保能够准确、快速及本土化的服务。

Since found our independent brand, LEADWAY established more than 20 international service network, we not only have the service network in Asia, South America, Africa, but also have the sales and service center in Europe, ensure the fastest local service for our customers.

合理的价格 Affordable Price

力维始终坚持以合理的价格为客户提供高品质的设备,我们无意以恶意的价格竞争来赢得市场,确保公司良性的、可持续性的发展;以及给客户 提供全面完善的服务。

LEADWAY always insist to provide customers high quality equipment under the reasonable price, we have no intention to pursue unhealthy price competition to win the market, to ensure the company's benign and sustainable development; and provide the comprehensive service for customers.

您的解决方案和量身定做合作伙伴 Your Solution & Custom-made Partner

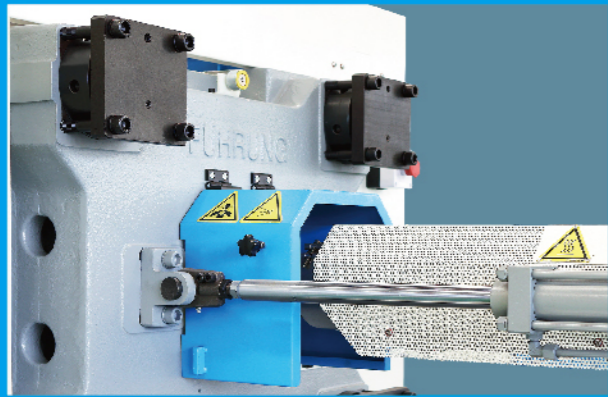
随着 社会经济的不断发展,客户在注塑设备、服务等各方面的特殊化和个性化的要求也越来越强烈,“量身定做”自始至终是我们的核心宗旨,我们根据多年的经验为客户在高效、精密以及控制成本等方面提供更多的增值服务,降低客户投资风险。

With the constant development of economy and society, customers demand more and more special and individual service; LEADWAY provide the "CUSTOM-MADE" service to help customers to be successful on high efficiency, high precision and cost saving, to reduce the investment risks.

OUR ADVANTAGES

我们的优势

- > 全方位媲美世界高端注塑机的性能，合理的价格，这是力维FÜHRUNG（菲弘）系列能够取得成功的关键。
 - > 我们对于品质的要求近乎苛刻，在FÜHRUNG系列上，我们要求每一颗螺钉必须是高强度的，这也是FÜHRUNG能胜任高性能表现的重要原因。
 - > FÜHRUNG带给您的绝对不只是省电这么简单，由于其各方面杰出的表现，无论是从人工、原料还是能源，她都将让您感到惊喜；同时，其各方面的优异表现将大大提升您的产品质量、生产效率、厂房空间使用效率以及市场竞争力。
- > Near performance with world high level machine, with an easy affordable price, it's the key of success for LEADWAY FÜHRUNG series machine.
 - > We are almost harsh for quality, on FÜHRUNG machine, we required each bolt should be high strength , and this is the main reason of FÜHRUNG machine's outstanding performance.
 - > Only energy saving? FÜHRUNG is not so simple! For its outstanding performance, no matter labor, material or energy, it will make you surprise. At the same time, it will help you highly improve your product quality, production efficiency, plant space using efficient and marketing competition.



- > **稳定**
20余年的塑机经验，结合多年来为世界知名品牌的OEM经验，FÜHRUNG系列除了带给您杰出的性能表现之外，还有超乎想象的稳定。
- > **Stability**
More than 20 years experience in this field, and several years OEM experience for world famous brands IMM, FÜHRUNG series can serve you perfect performance and stability.
- > **高速**
快速响应的液压系统、反应灵敏的控制系统配合最优化的机械结构，使整机速度大幅提升。
- > **High speed**
Fast response hydraulic system, sensitive controller system, and the best optimized mechanical system, highly improved machine's cycle time.
- > **洁净**
长期免维护的调模系统、线性导轨射出结构、动模板部位采用油脂润滑，令生产更为洁净。
- > **Clean**
Maintenance free lubrication material used on adjustment system, linear guide rail for injection system, grease lubrication for movable platen, ensure a clean production environment for you.
- > **可靠**
液压、电器件全部采用世界顶尖品牌，整个机械结构刚性远远超过国内同行，关键机械部位的供应商与世界高端品牌一致。
- > **Reliability**
All of hydraulic and electric parts adopt world top brands, the whole mechanical system's rigidity is much higher than Chinese normal IMM, the key mechanical parts' suppliers same as world first-class IMM brands.

- > **节能**
伺服精密节能系统配合优化设计的油路，带给您可媲美全电机的节能效果。
- > **Energy Saving**
Precision and energy saving servo system with optimized designed hydraulic circuit, the energy saving capacity is near with full-electric machine.

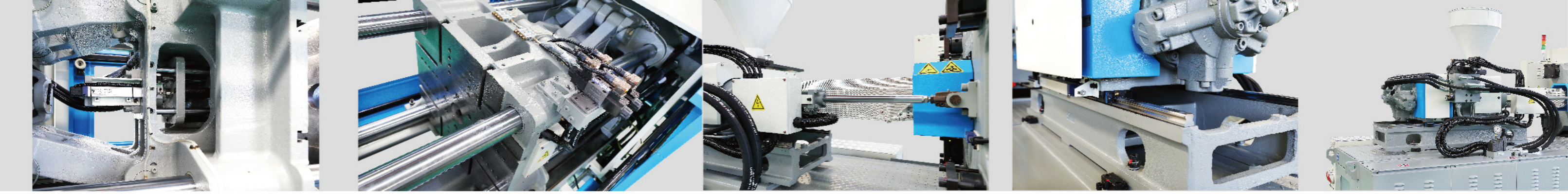
- > **模块化**
您随时可以重新再来，基于FÜHRUNG模块式的设计，改装和升级将易如反掌。
- > **Modularity**
You can always come back for seconds, thanks to FÜHRUNG modular design, upgrades and retrofits are a piece of cake.

- > **个性化**
根据您的选择和实际需求，我们按照您的菜单量身打造，我们丰富的可选功能几乎覆盖了您的一切需求。
- > **Individuality**
We will custom-made your FÜHRUNG according to your menu and necessary, and our wide range options nearly covered all of your necessary.

- > **性价比**
FÜHRUNG不仅仅拥有与世界高端塑机媲美的性能，其合理的价位也令您欣然接受。
- > **Cost-performance**
FÜHRUNG not only has the near performance with world high level IMM, but also its price is easy affordable.

- > **用户友好**
操作简单、维护方便，FÜHRUNG带给您非一般的感受。
- > **User-friendly**
Easy for operation, convenient for maintenance, FÜHRUNG makes everything easy.



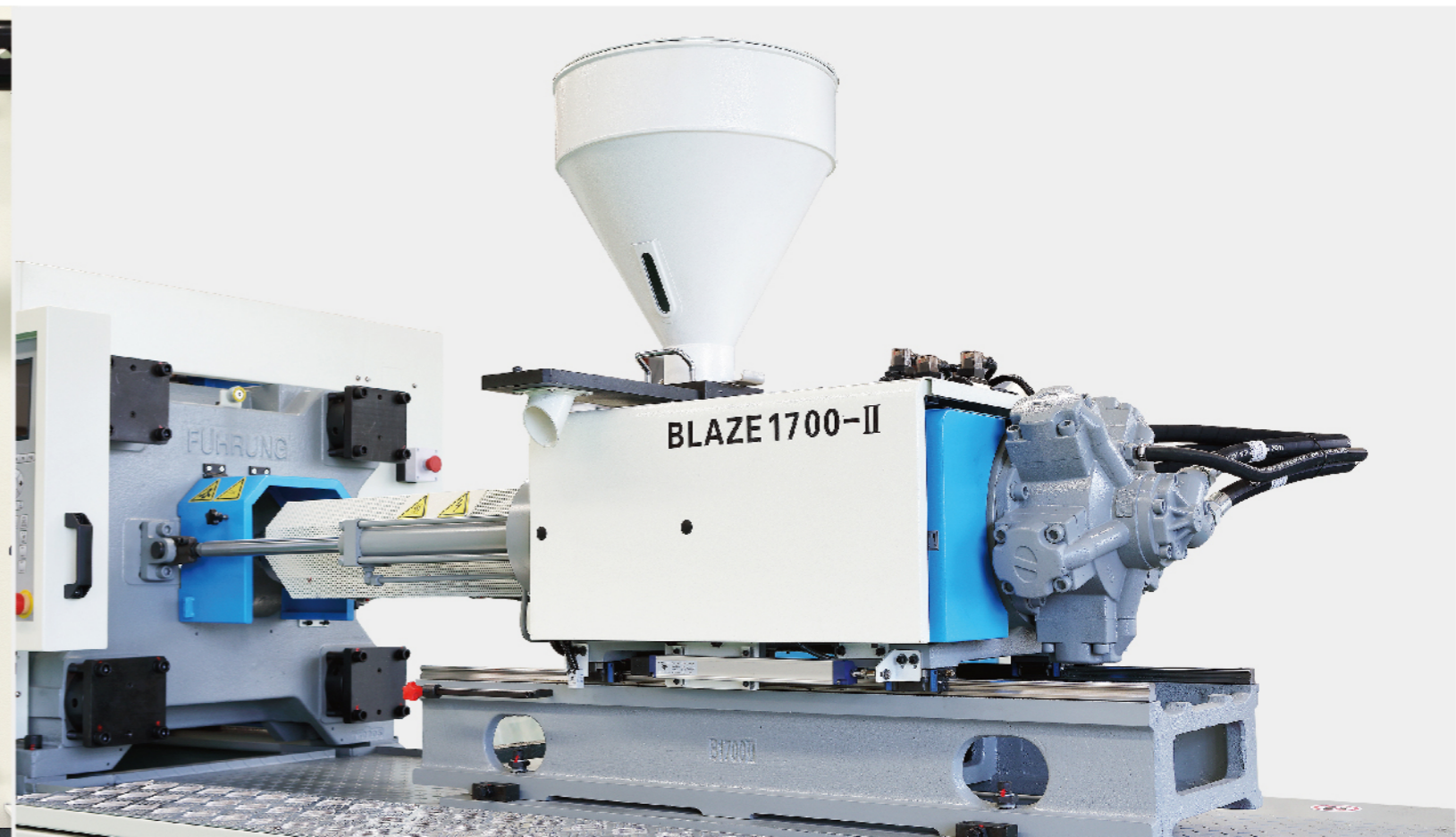
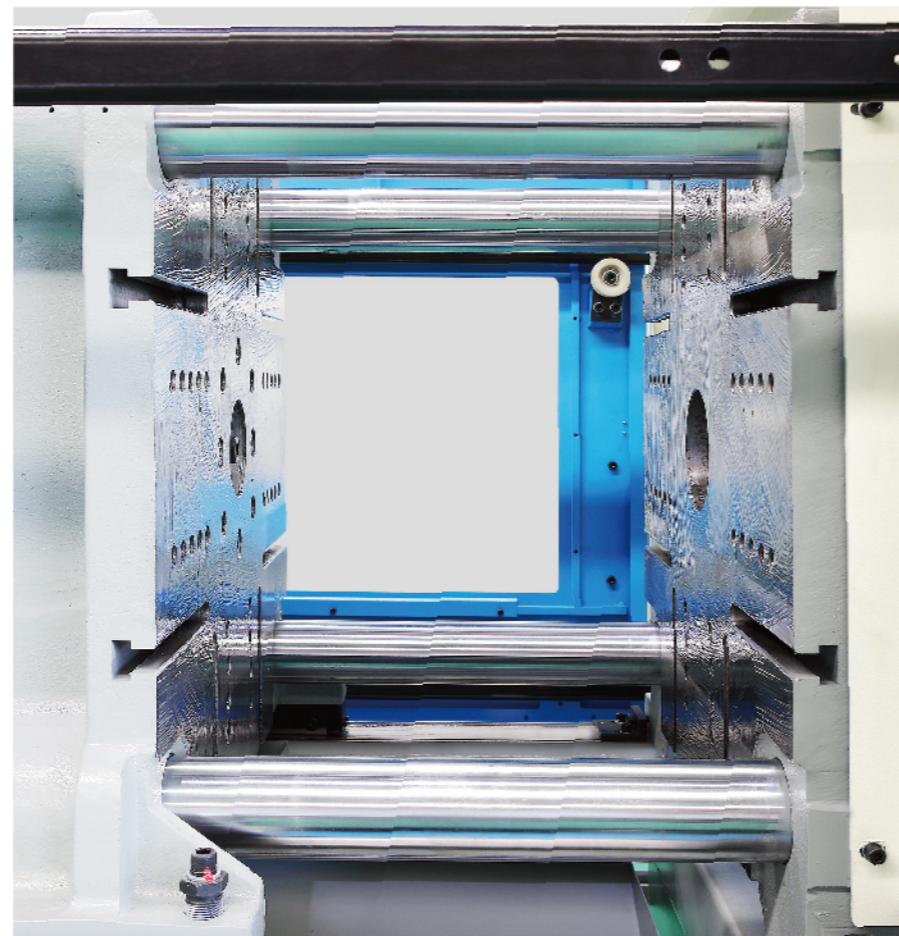
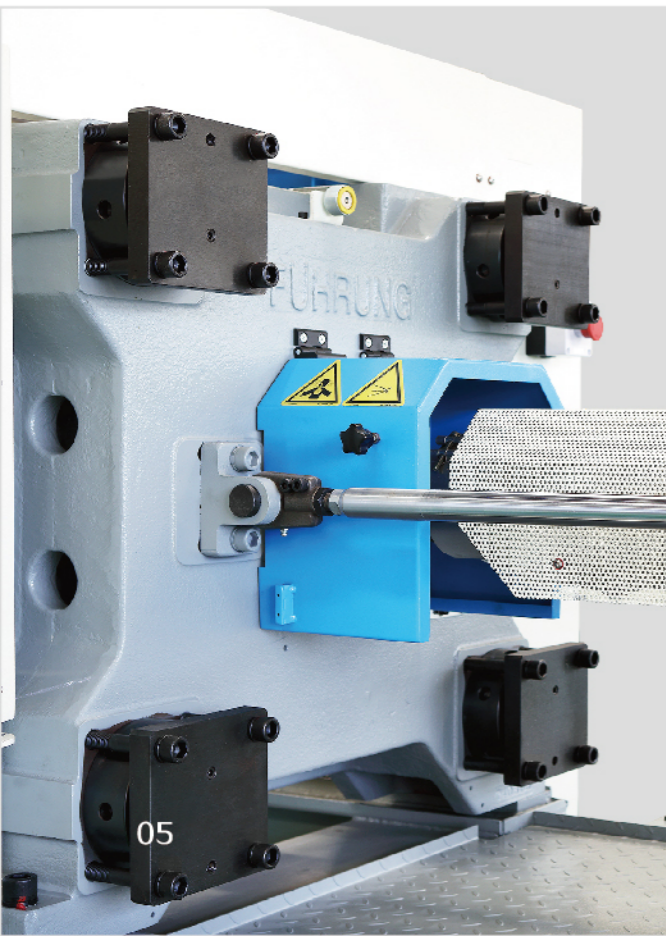


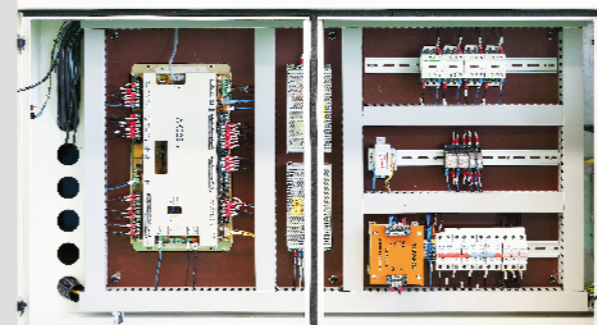
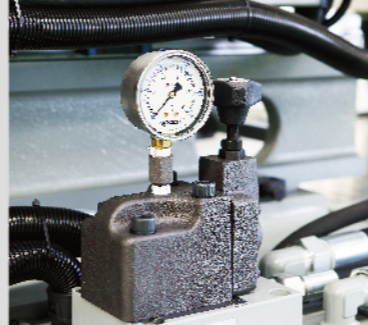
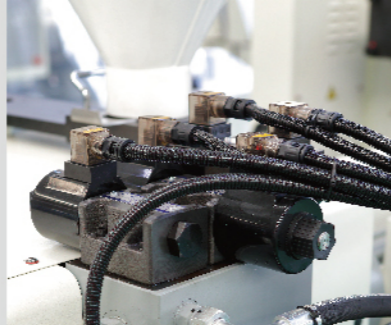
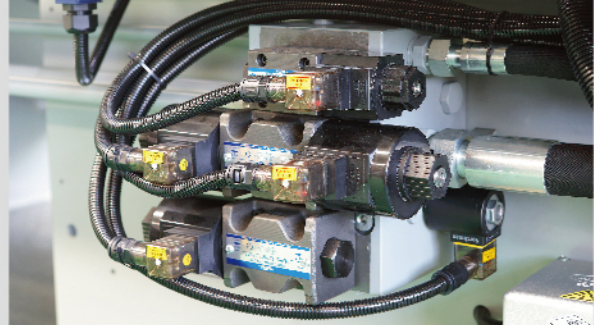
CLAMPING UNIT 锁模单元

- 更大的拉杆间距,可适应更多的模具尺寸范围和产品多腔化的需求。
- 加长、加宽的导向支撑,重复精度更高,大幅度提升产品质量和模具使用寿命。
- 配置升级,拉杆、顶出导向套采用含石墨铜套,二板、尾板滑脚采用含石墨铜块,确保快速、精确开锁模。
- 机械结构、连杆设计更优化,运行速度更快,生产效率提高
- 欧式顶出结构,空间更大,维护更方便
- 预留空间大,方便维护及产品升级改造
- 整体机械刚性大大超出国内同行,不仅仅提升机器使用寿命,还能有效的保护模具
- Larger space between tie-bars, suitable for larger molds and multi-cavity necessary.
- Longer and wider guide length, higher repeatability precision, improve product quality and mold working-life.
- Upgraded parts, Graphite-copper bushes and slider used on tie-bar, ejector and movable platen, ensure fast and precise mold close and open.
- Better designed mechanical structure and toggle system, faster cycle time, and improve production efficiency.
- European type ejector structure, larger space, convenient for maintenance.
- Prepared enough space for upgrade and retrofits.
- Much higher rigidity mechanical system than normal Chinese IMM, not only improve machine's using-life, but also can protect mold.

INJECTION UNIT 注射单元

- 采用整体射台支撑结构配合精密的双线性导轨,确保精密、快速的启动速度。
- 双射移注射结构,进一步提升注射精度。
- 射台钢管采用接头连接,无焊接设计使得维护、售后更加简单。
- 上翻式射嘴防护罩,生产及维护更加简单。
- 过胶头、过胶圈、过胶垫圈采用高品质进口材料 SKD61; 品种齐全的螺杆设计,可充分满足不同塑料原料及特殊加工要求的注塑成型。
- Full supported injection unit with dual precise linear guide rails, ensure the best precision and fast start speed.
- Dual carriage cylinders improve a better injection precision.
- Injection unit steel pipes adopt pipe fitting to connect, no welding design ensure maintenance and after-service to be easier.
- Upturning designed nozzle cover, production and maintenance to be easier.
- Imported high quality SKD61 material screw tip, check ring and thrust ring; a lot kinds of screws design can meet different plastic material and special processing injection molding needs.





HYDRAULIC UNIT

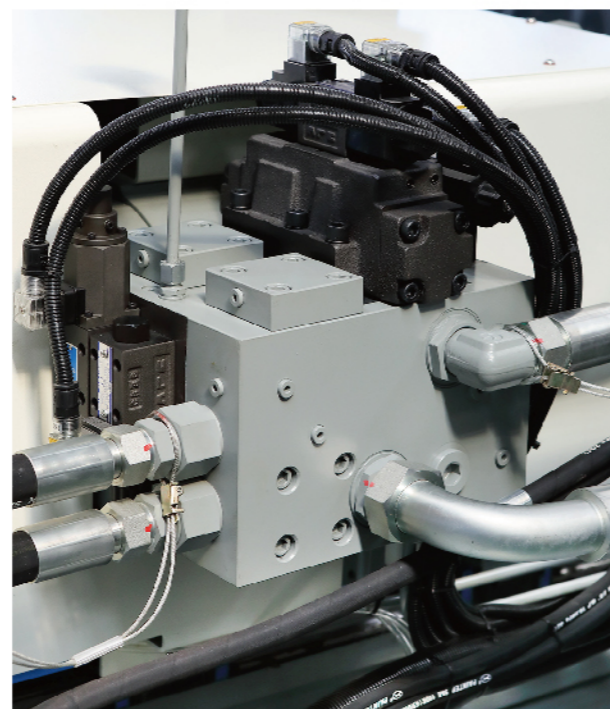
液压单元

ELECTRIC UNIT

电器单元

- 标配精密节能伺服系统,与传统注塑机相比节能效果可达 20%~80%。
- 采用进口知名品牌液压部件,确保机器的可靠性和快速反映。
- 可视化、可拆卸的油箱,油路维护更为简单、方便。
- 采用模块化设计的过渡阀块,油路、功能升级更为简单,维护更加方便。
- 自封式磁性吸油过滤器,油路维护更方便。
- 油路布局科学,维护更简单。
- 采用 DIN 标准锥面带密封圈接头,阀板采用 G 螺纹密封堵头,杜绝油污污染。

- Standard equipped with precise and energy saving servomotor system, energy saving capacity can reach to 20%~80% than traditional injection machine.
- World famous brands hydraulic parts ensure machine's reliability and fast response speed.
- Visible and dischargeable oil tank, easy for hydraulic circuit maintenance. Adopt modular adaptor valve blocks, hydraulic circuit and functions easy for up-grade and maintenance.
- Self-sealed magnetic suction filter, make your maintenance more convenient.
- Logical distribution of pump oil suction port, oil tank oil outlet and hydraulic pipe fits, easy for maintenance.
- Germany DIN standard hydraulic pipe fitting with seal, G screw thread style plug, avoid oil pollution.



- 世界名牌电器元件,质量可靠。
- 高品质彩色液晶控制器,和动力系统厂家合作研发,配合更好,响应速度更快。
- 标配三色报警灯带蜂鸣器,机器运行状态一目了然。
- 可实现现代化联网管理功能。
- 电箱、接线盒处采用降噪、防水海绵条,确保设备的安全性。
- 机器程序均根据欧洲安全标准设计,保护操作人员的安全。

- World well-known brands electric parts.
- High quality large color screen controller, multi-language available
- Standard equipped LED three-color tower light with alarm, machine working situation is clear,
- Modernized network management function available.
- Water-proof rubber seal used on electric cabinet ensure high safety.
- Machine program according to CE safety standard.



FUNCTION LIST

机器配置

注射部分	INJECTION UNIT	110-180	220-350	450-700	900-1300
标准螺杆:B	Standard B screw	●	●	●	●
其他型号螺杆	Other size screw	○	○	○	○
针阀式自封喷嘴	Needle valve nozzle (SVN)	○	○	○	○
液压气动自封式喷嘴	Hydraulic / Pneumatic shut off nozzle	○	○	○	○
双缸注射系统	Double cylinder injection structure	●	●	●	●
电预速	Electrical pre-plasticizing	○	○	○	○
注射电子尺	Injection transducer control	●	●	●	●
射嘴电子尺	Nozzle transducer	○	○	○	○
螺杆转速显示	Screw rotation speed display	●	●	●	●
落料口温度自动控制	Feed zone temp automatic control	○	○	○	○
普通发热圈	Normal heat bands	○	○	○	○
陶瓷加热圈	Ceramic heat bands	●	●	●	●
红外加热圈	Electromagnetic heater	○	○	○	○
射台集中润滑装置	Injection unit centralized lubrication	○	○	○	●
比例背压	Proportional backpressure	○	●	●	●
氮气射胶装置	Accumulator fast injection	○	○	○	○
锁模部分	CLAMPING UNIT				
T型槽模板	T-slot mold platen	●	●	●	●
螺纹孔模板	Screw hole platen	○	○	○	○
容模置加大	Extend mold height	○	○	○	○
液压自动调节动模板支撑	Auto-adjustment movable platen support device	—	—	—	●
机械、电气双重安全装置	Mechanical & electric interlock device	●	●	●	●
开合模、脱模电子尺控制	Mold open & close and ejector transducer control	●	●	●	●
成品滑道带电眼检测	Product dropdown chute with sensor	○	○	○	○
成品QS功能装	Good / bad parts selector	○	○	○	○
自动调模功能	Mold height auto-adjustment function	●	●	●	●

锁模部分	CLAMPING UNIT	110-180	220-350	450-700	900-1300
合模力显示装置	Clamping force indication	○	○	○	○
加宽机门	Widened safety door	○	○	○	○
自动安全门	Automatic safety door	○	○	○	●
模区安全踏板	Safety pedal in mold area	—	—	—	○
定量式集中润滑装置	Quantitative automatic centralized lubrication	●	●	●	●
递进式集中润滑装置	Progressive (PRG) lubrication system	—	—	—	○
快插接头分水器	Fast connector water regulation	○	○	○	○
玻璃管冷却流量计	Glass water regulator	○	○	○	○
液压、电动旋转脱模装置	Hydraulic / Electric rotation demould	○	○	○	○
吹风装置	Air blast	○	○	○	○
一组抽芯装置	1 PCS Core pull	●	●	●	●
液压绞牙装置	Hydraulic unscrew device	○	○	○	○
开合模比例阀	Proportional valve for mold open & close	○	○	○	○
热流道喷嘴液压控制功能	Hydraulic shut off control for hot runner nozzle	○	○	○	○
隔热板	Heat insulating plate	○	○	○	○
液压部分	HYDRAULIC UNIT				
伺服油泵	Servo motor system	●	●	●	●
油泵、电机功率加大	Increase pump motor capacity	○	○	○	○
同步动作 (用PQ2)	Simultaneous movement (use PQ2)	○	○	○	○
同步动作 (用单泵)	Simultaneous movement (use single pump)	○	○	○	○
液压安全锁	Hydraulic safety interlock	○	○	○	●
油温显视	Oil temperature indication	●	●	●	●
油温自动控制	Oil temperature Auto control	○	○	○	○
油位警报	Oil level alarm	○	○	○	○
油温预热功能	Hydraulic oil pre-heating	○	○	○	○
旁路过滤器	By-pass filter	○	○	○	○
高压在线过滤器	High pressure in-line filter	○	○	○	○
低压回油过滤器	Low pressure return oil filter	○	○	○	○
外置过滤器接口	External filter interface	●	●	●	●

FUNCTION LIST 机器配置

电气部分	ELECTRIC UNIT	110-180	220-350	450-700	900-1300
弘讯控制器	Techmation controller	●	●	●	●
科霸控制器KEBA	KEBA controller	○	○	○	○
欧规12机械手接口	Euromap 12 robot interface	○	○	○	○
欧规67机械手接	Euromap 67 robot interface	○	○	○	○
三色报警灯	Three color tower lighter with alarm	●	●	●	●
固态继电器加热	SSR	○	○	○	○
三相五线插座(16A)	Power socket 3P+2(16A)	●	●	—	—
三相五线插座(32A)	Power socket 3P+2(32A)	○	○	●	●
单相插座(10A)	Single phase power socket (10A)	●	●	●	●
热流道控制系统与接口	Hot runner control and interface	○	○	○	○
力维网络管理系统	Leadway network management system	○	○	○	○
其他	OTHERS				
避震脚、说明书	Leveling pads, Manual	●	●	●	●
工具箱、易损备件	Tool box, Easy broken parts	●	●	●	●
码模夹	Mold clamp	●	●	●	●
普通料斗	Steel hopper	●	●	●	●
特殊颜色(需提供潘通号)	Special color (Pantone No. necessary)	○	○	○	○
加高机身	Higher machine base	○	○	○	○
机械手	Robot	○	○	○	○
冷水机	Chiller	○	○	○	○
模温机	Mold temperature controller	○	○	○	○
除湿机	Dehumidifier	○	○	○	○
自动上料机	Auto-loader	○	○	○	○
熏蒸木装箱	Fumigated wooden case	○	○	○	○
取制品平台	Platform for ready products	○	○	○	○

SHOT WEIGHT CONVERSION TABLE

常用塑料熔料状态重量计算修正因子

材料 Material	熔料修正因子 Factor
HD-PE	0.75
LD-PE	0.73
PP	0.73
PP+20%Talcum(滑石粉)	0.85
PP+40%Talcum(滑石粉)	0.98
PP+20%GF(玻纤)	0.85
PS	0.91
SB	0.88
ABS	0.88
SAN	0.88
PA	0.91
PA6+30%(玻纤)	1.14
PC	0.97
PE	0.71
PC/ABS	0.94
PMMA	0.94
POM	1.15
PET	1.08
PBT	1.08
CA	1.02
CAB	0.97
PVC-rigid	1.02
PVC-flexible	1.12
PF(thermosets)	1.3
UP(thermosets)	1.6

注射重量=熔料修正因子×注射容积
The maximum shotweights(g)are calculated by multiplying the theorstical shot volume(cm³)by the above factor

技术参数 TECHNICAL PARAMETERS

说明	DESCRIPTION	UNIT	BLAZE1100-II			BLAZE1500-II			BLAZE1800-II		
国际公认型号	International Size Rating		340			480			640		
注射部分	Injection Unit		A	B	C	A	B	C	A	B	C
螺杆直径	Screw Diameter	mm	30	35	40	38	42	45	42	45	50
螺杆长径比	Screw L/D Ratio	L/D	22	20	17.5	22	20	18.5	22	20	18.5
理论注射容量	Shot Size (Theoretical)	cm ³	106	164	214	216	277	318	291	358	442
注射重量(PS)	Shot Weight(Ps)	g	96	149	194	196	252	289	265	326	402
		oz	3.4	5.3	6.8	6.9	8.9	10.2	9.3	11.5	14.2
注射压力	Injection Pressure	Bar	2836	2083	1595	2127	1741	1517	2063	1798	1456
螺杆转速	Screw Speed	r/min	244			232			224		
锁模部分	Clamping Unit										
锁模力	Clamping Force	kN	1100			1500			1800		
移模行程	Opening Stroke	mm	340			375			430		
拉杆间距	Space Between Tie-bars(HxV)	mm	420 x 370			470 x 420			520 x 470		
最大模厚	Max. Mold Height	mm	390			500			530		
最小模厚	Min. Mold Height	mm	150			160			180		
顶出行程	Ejector Stroke	mm	100			120			140		
顶出力	Ejector Force	kN	45			45			45		
其他	Others										
油泵电机功率	Pump Motor Power	kW	18.2			18.2			20.4		
电热功率	Heater Power	kW	6.8			7.4			9.9		
外形尺寸	Machine Dimensions(LxWxH)	m	4.4 x 1.2 x 1.6			4.6 x 1.3 x 1.7			5.2 x 1.4 x 1.8		
机器重量	Machine Weight	t	3.7			4.2			5.3		
料斗容积	Hopper Capacity	kg	25			25			25		
油箱容积	Oil Tank Capacity	L	150			200			250		

因设计更新，以上规格如有改动，恕不另行通知。Due to continuous improvements, we reserve the right to amend any aspect of the above specifications without notice.

技术参数 TECHNICAL PARAMETERS

说明	DESCRIPTION	UNIT	BLAZE2200-II			BLAZE2800-II			BLAZE3500-II		
国际公认型号	International Size Rating		890			1560			2350		
注射部分	Injection Unit		A	B	C	A	B	C	A	B	C
螺杆直径	Screw Diameter	mm	45	50	55	55	60	65	65	70	75
螺杆长径比	Screw L/D Ratio	L/D	22	20	18.5	22	20	18.5	22	20	19
理论注射容量	Shot Size (Theoretical)	cm ³	367	491	594	642	848	996	1078	1347	1546
注射重量(PS)	Shot Weight(Ps)	g	333	447	541	584	772	906	981	1226	1407
		oz	11.7	15.8	19.1	20.6	27.2	32	34.6	43.2	49.6
注射压力	Injection Pressure	Bar	2253	1825	1508	2190	1840	1568	2028	1749	1523
螺杆转速	Screw Speed	r/min	167			180			154		
锁模部分	Clamping Unit										
锁模力	Clamping Force	kN	2200			2800			3500		
移模行程	Opening Stroke	mm	490			560			670		
拉杆间距	Space Between Tie-bars(HxV)	mm	580 x 530			630 x 580			730 x 680		
最大模厚	Max. Mold Height	mm	580			600			700		
最小模厚	Min. Mold Height	mm	200			220			280		
顶出行程	Ejector Stroke	mm	150			160			180		
顶出力	Ejector Force	kN	62			62			110		
其他	Others										
油泵电机功率	Pump Motor Power	kW	23			28.7			36.7		
电热功率	Heater Power	kW	11.5			13.12			22.04		
外形尺寸	Machine Dimensions(LxWxH)	m	5.9 x 1.6 x 2.0			6.7 x 1.8 x 2.0			7.7 x 2.0 x 2.1		
机器重量	Machine Weight	t	7.5			9.2			13.05		
料斗容积	Hopper Capacity	kg	50			50			50		
油箱容积	Oil Tank Capacity	L	300			380			550		

因设计更新，以上规格如有改动，恕不另行通知。Due to continuous improvements, we reserve the right to amend any aspect of the above specifications without notice.

技术参数 TECHNICAL PARAMETERS

说明	DESCRIPTION	UNIT	BLAZE4500-II			BLAZE5500-II			BLAZE7000-II			
国际公认型号	International Size Rating		2980			4250			5380			
注射部分	Injection Unit		A	B	C	A	B	C	A	B	C	D
螺杆直径	Screw Diameter	mm	70	75	80	75	85	95	80	90	100	110
螺杆长径比	Screw L/D Ratio	L/D	22	20	19	23.8	21	18.7	24.5	22	19.8	18
理论注射容量	Shot Size (Theoretical)	cm ³	1347	1657	1885	1856	2383	2977	2262	2863	3534	4276
注射重量(PS)	Shot Weight(Ps)	g	1226	1508	1715	1689	2169	2709	2058	2605	3216	3891
		oz	43.2	53.2	60.5	59.6	76.5	95.6	72.6	91.9	113.4	137.3
注射压力	Injection Pressure	Bar	2065	1799	1581	2293	1785	1429	2380	1880	1523	1259
螺杆转速	Screw Speed	r/min	152			144			131			
锁模部分	Clamping Unit											
锁模力	Clamping Force	kN	4500			5500			7000			
移模行程	Opening Stroke	mm	760			900			1000			
拉杆间距	Space Between Tie-bars(HxV)	mm	780 x 730			886 x 820			980 x 960			
最大模厚	Max. Mold Height	mm	750			850			960			
最小模厚	Min. Mold Height	mm	320			350			400			
顶出行程	Ejector Stroke	mm	200			250			280			
顶出力	Ejector Force	kN	110			130			200			
其他	Others											
油泵电机功率	Pump Motor Power	kW	39.4			55.4			36.7+36.7			
电热功率	Heater Power	kW	27.71			32.15			54.25			
外形尺寸	Machine Dimensions(LxWxH)	m	8.2 x 2.0 x 2.2			9.1 x 2.2 x 2.2			10.3 x 2.3 x 2.7			
机器重量	Machine Weight	t	16.3			21.6			32			
料斗容积	Hopper Capacity	kg	50KG			100			100			
油箱容积	Oil Tank Capacity	L	650			750			880			

因设计更新，以上规格如有改动，恕不另行通知。Due to continuous improvements, we reserve the right to amend any aspect of the above specifications without notice.

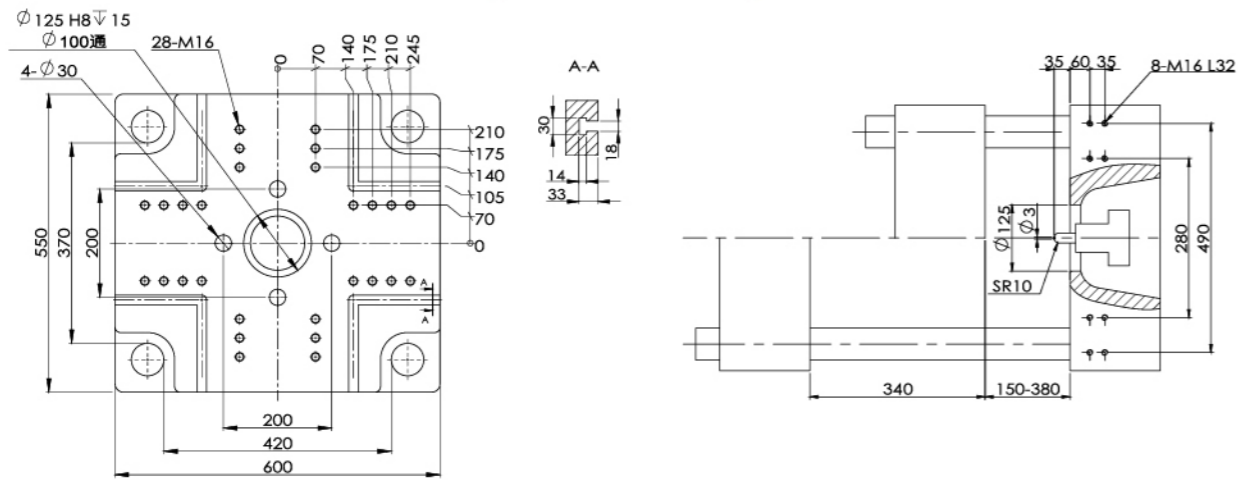
技术参数 TECHNICAL PARAMETERS

说明	DESCRIPTION	UNIT	BLAZE9000-II				BLAZE11000-II				BLAZE13000-II			
国际公认型号	International Size Rating		6800				8490				8490			
注射部分	Injection Unit		A	B	C	D	A	B	C	D	A	B	C	D
螺杆直径	Screw Diameter	mm	90	100	110	120	100	110	120	130	100	110	120	130
螺杆长径比	Screw L/D Ratio	L/D	24.4	22	20	18.3	24.2	22	20.2	18.6	24.2	22	20.2	18.6
理论注射容量	Shot Size (Theoretical)	cm ³	3181	3691	4467	5315	4006	4847	5768	6769	4006	4847	5768	6769
注射重量(PS)	Shot Weight(Ps)	g	2721	3359	4065	4837	3645	4411	5249	6160	3645	4411	5249	6160
		oz	96.0	118.5	143.4	170.6	128.6	155.6	185.1	217.3	128.6	155.6	185.1	217.3
注射压力	Injection Pressure	Bar	2276	1843	1523	1280	2122	1753	1473	1255	2122	1753	1473	1255
螺杆转速	Screw Speed	r/min	105				100				100			
锁模部分	Clamping Unit													
锁模力	Clamping Force	kN	9000				11000				13000			
移模行程	Opening Stroke	mm	1130				1230				1320			
拉杆间距	Space Between Tie-bars(HxV)	mm	1080 x 1080				1180 x 1180				1250 x 1250			
最大模厚	Max. Mold Height	mm	1100				1200				1300			
最小模厚	Min. Mold Height	mm	450				500				550			
顶出行程	Ejector Stroke	mm	320				320				320			
顶出力	Ejector Force	kN	215				215				215			
其他	Others													
油泵电机功率	Pump Motor Power	kW	39.4+39.4				39.4+55.4				39.4+55.4			
电热功率	Heater Power	kW	70.6				82.8				82.8			
外形尺寸	Machine Dimensions(LxWxH)	m	11.2 x 2.5 x 3.3				11.9 x 2.7 x 3.3				12.9 x 2.8 x 3.3			
机器重量	Machine Weight	t	45				50				61			
料斗容积	Hopper Capacity	kg	100				100				100			
油箱容积	Oil Tank Capacity	L	1000				1150				1150			

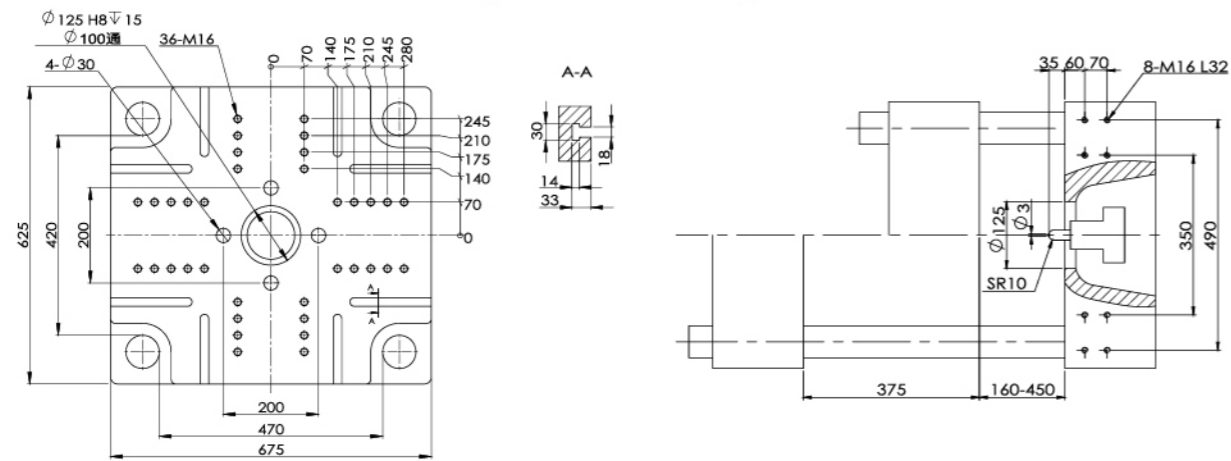
因设计更新，以上规格如有改动，恕不另行通知。Due to continuous improvements, we reserve the right to amend any aspect of the above specifications without notice.

模板尺寸 TEMPLATE DIMENSIONS

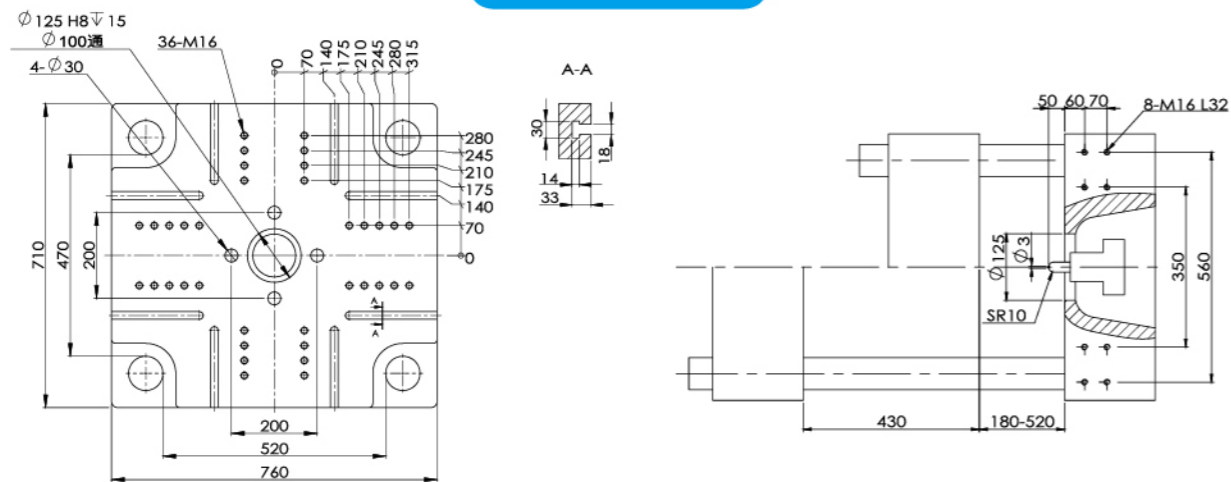
BLAZE1100-II



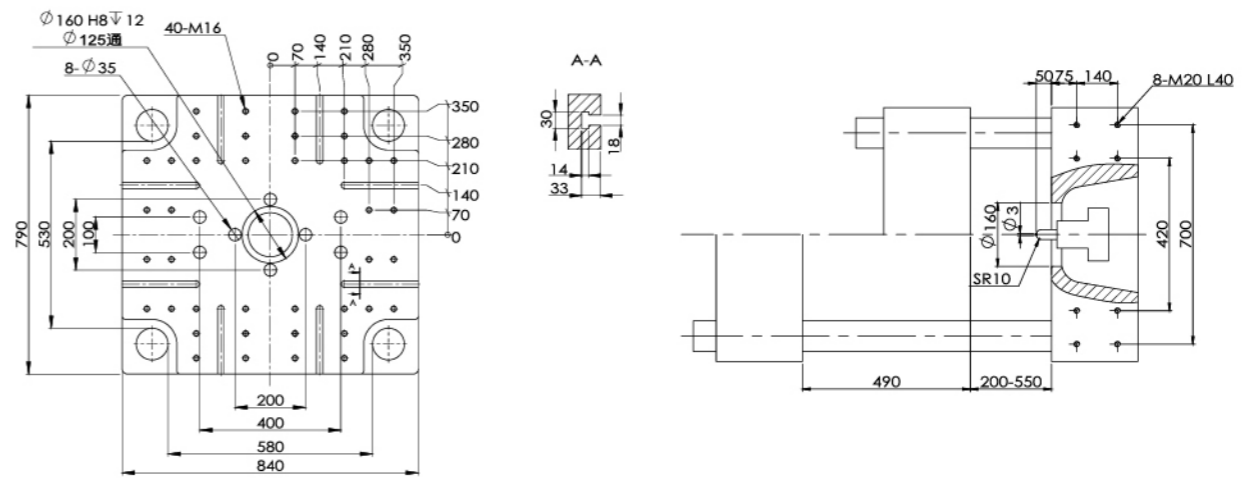
BLAZE1500-II



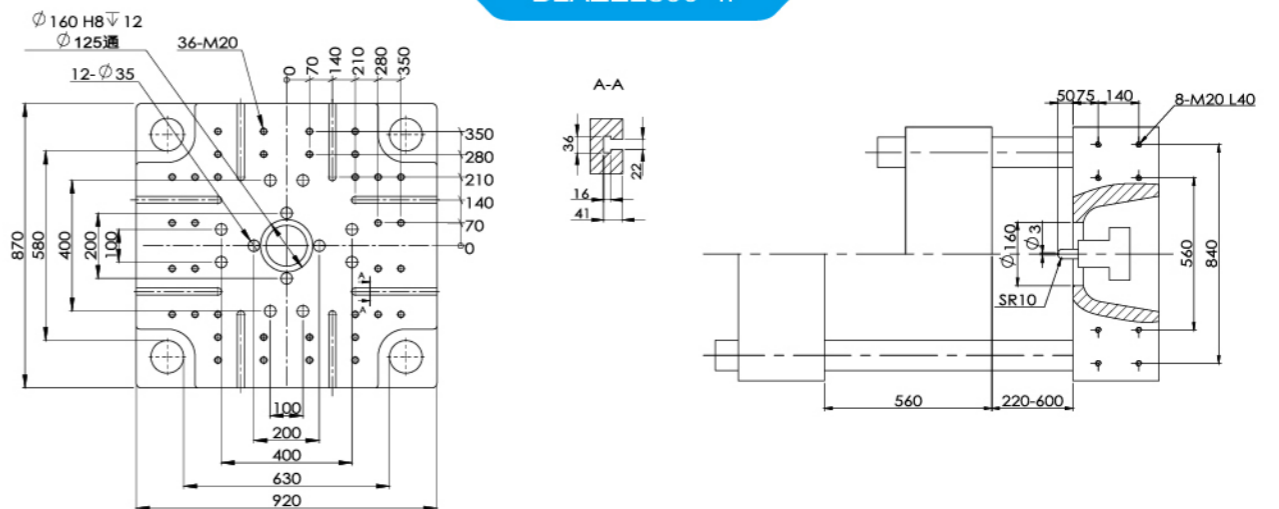
BLAZE1800-II



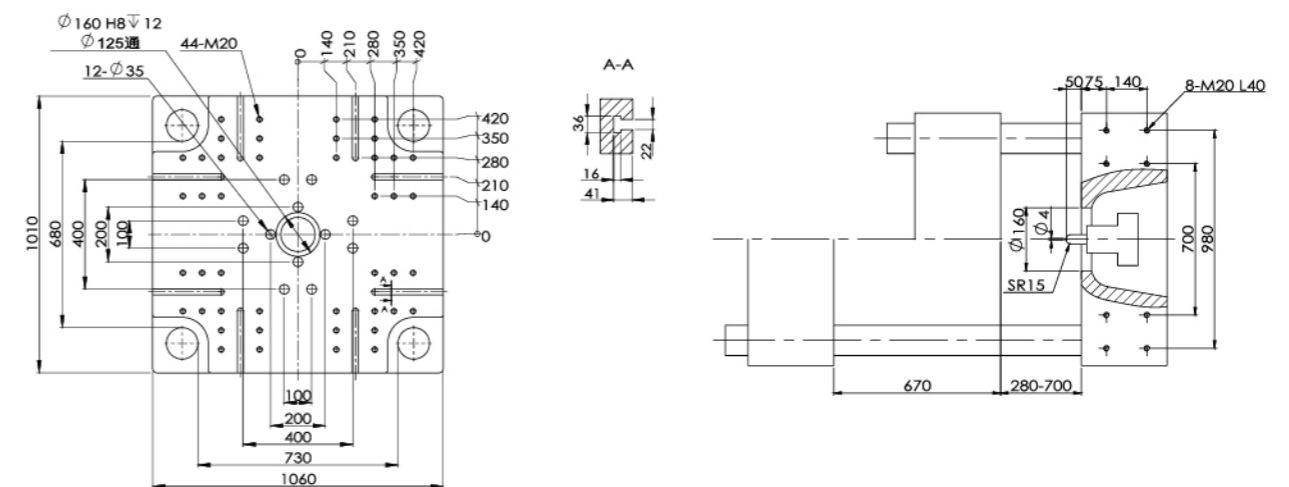
BLAZE2200-II



BLAZE2800-II

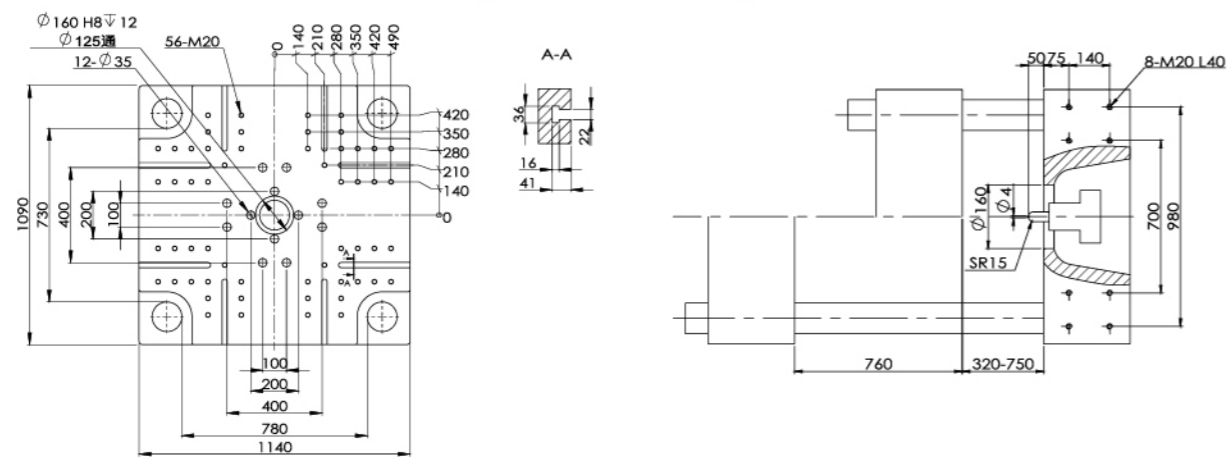


BLAZE3500-II

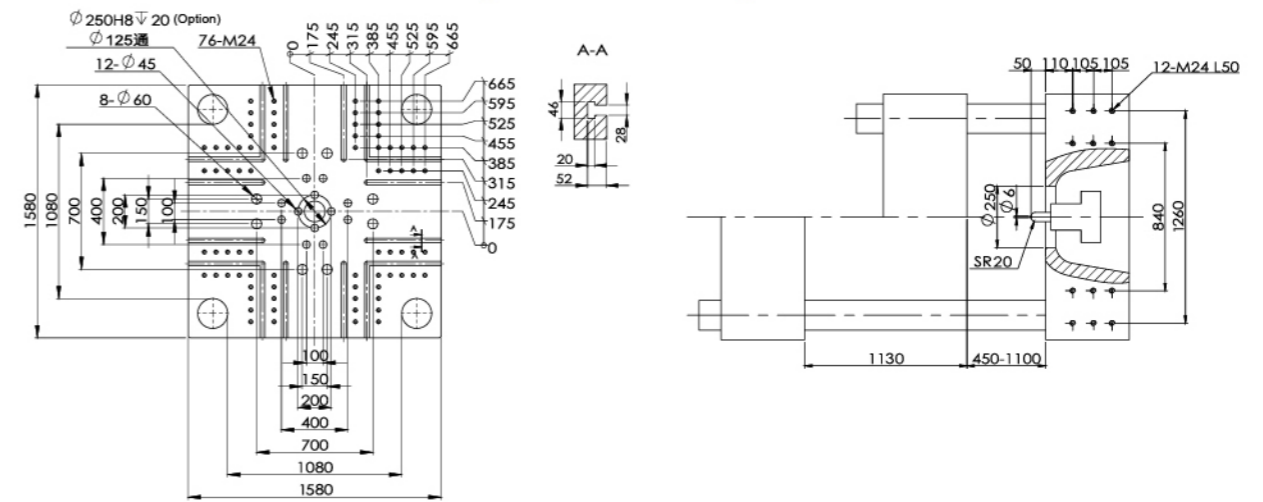


模板尺寸 TEMPLATE DIMENSIONS

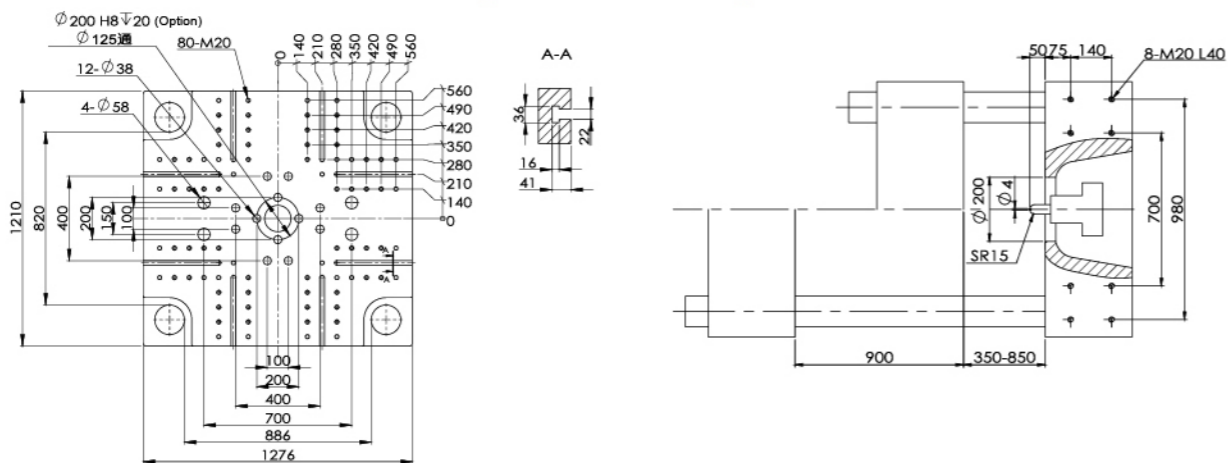
BLAZE4500-II



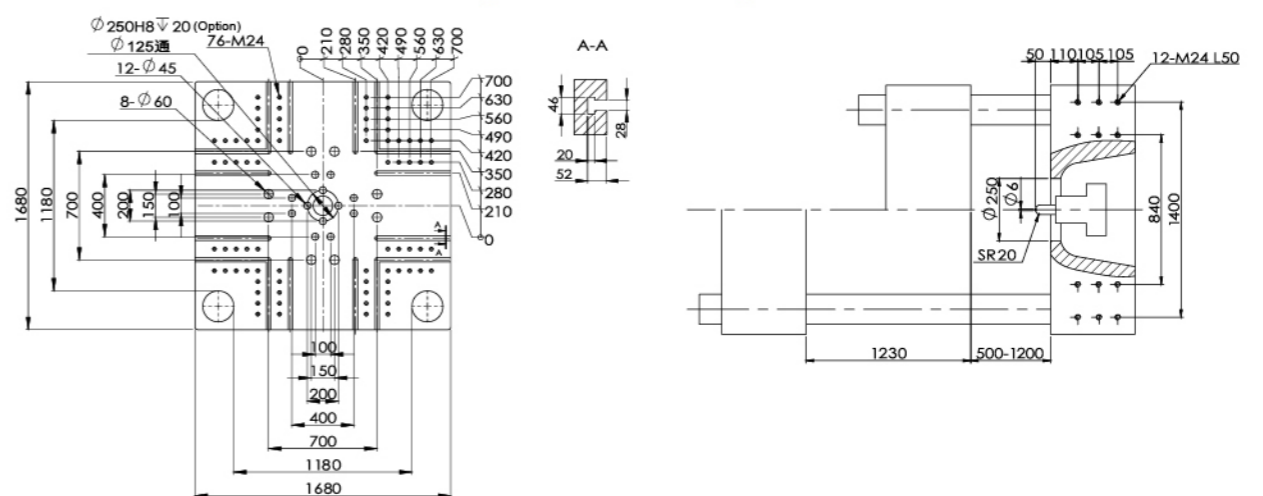
BLAZE9000-II



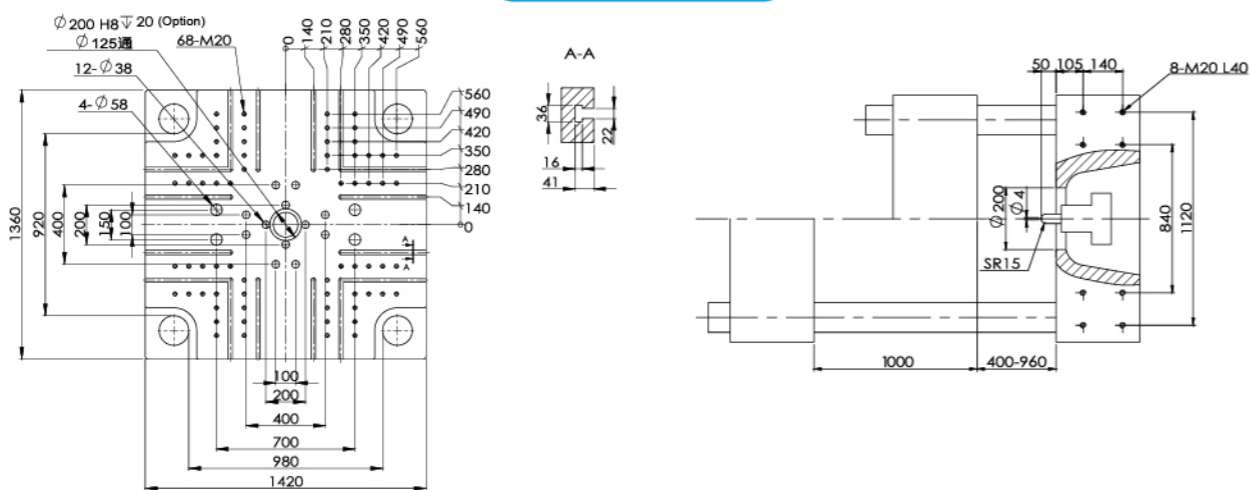
BLAZE5500-II



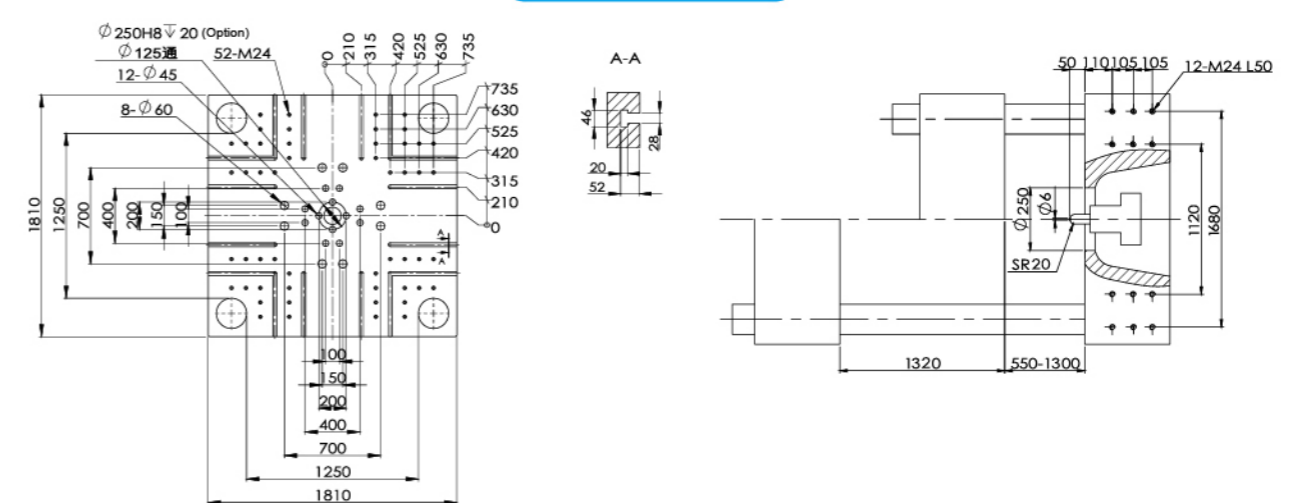
BLAZE11000-II

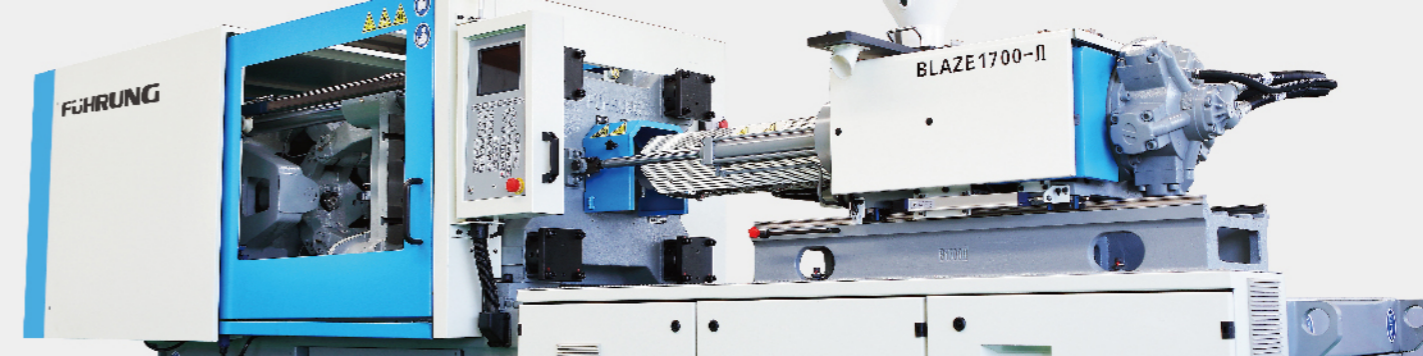


BLAZE7000-II



BLAZE13000-II





服务无处不在-我们永远的理念 SERVICE EVERYWHERE - OUR IDEOLOGY FOREVER

服务贯穿了力维的整个核心业务,以及机器生产和市场推广的过程。市场竞争要求不断增长的提供额外附加价值,客户服务也将变得愈加重要。力维的服务是全面的从始至终支持,为客户提供完整的售前咨询、售中支持、和售后服务。无论您的机器使用了多长时间,所有力维的用户都将享受我们终身维护的服务。

Service along with Leadway's actual core business, the manufacture and sales of machines. Marketing competition required increasing and extra value for clients, service becomes more and more important. Leadway's services all-around and from beginning to end, we serve to our clients the complete before-sales consultation, in-sales support and after-sales service. No matter how long your machine used, our services are available throughout the machine's useful life for every client.

用心的技术团队

Circumspect Technology Team

力维公司的技术团队享誉塑机界 20 余年,我们不只是研发、制造符合市场需求的机器,更是通过我们雄厚的技术基础,引领客户走向更加高效、节能、高品质的领域。

Leadway technology team is well known more than 20 years in injection molding machine industry, we not only R&D machines which are popular in market, but also use our powerful technology to lead our clients to a higher efficiency, more saving and higher quality manufacturing area.

全面的咨询中心

All-around Consultation Centre

力维技术团队之核心业务是帮助客户攻克注塑成型难点; 为项目提供全面的建议和解决方案。我们为客户全面的解析项目难点,推荐符合项目需求的机器。整个方案从经济适用到精密高效,以及未来市场发展趋势,客户可根据自己的购买能力与实际需求订购。

Leadway technology team's core business: help clients to solve problems, provide turn-key projects and make solutions on projects. We analyze all the difficulties and give clients the suitable solutions, recommend clients the suitable machines. The whole solutions from economic and suitable machine, high precise and high efficiency machine to the marketing development trend machine, clients can choose one of them according to their buying ability and necessary.

迅捷的售后服务

Fast Service System

力维拥有现代化的管理系统,我们将以最快的速度把服务请求反馈给我们的合作代理点以及一线的服务人员,第一时间赶到现场解决问题。

With Leadway's modernized management system, we will try our fastest to inform our cooperation, agency or our frontline service personal the service requests, arrive at the scene at the first time to solve problems.

完善的培训项目

Considerate Training Service

力维的每个合作、代理点都将为我们的用户提供完善的培训服务,全面的了解我们的机器,以及合理的操作和维护。力维总部的高级工程师也将定时拜访我们的用户,深入调查客户的使用情况,根据客户的反馈意见对机器升级,使我们的机器更加符合客户的需求。

Each Leadway's cooperation or agency area will offer our user the considerate training service; ensure our clients can comprehensive understanding, proper use and maintenance our machine. Senior engineers from Leadway headquarters will dispatched to visit our clients in fixed time, investigated clients' use, and upgrade our machine according to clients' feedback, make our machine will be better to meet clients' needs.

快捷的全球配送

Quick Global Delivery

售后服务的好坏取决于零配件的供应速度,力维以一周 7 天,每天 24 小时的方式提供服务。我们总部和合作、代理点都有充足的常规零配件库存; 对于特殊的零配件,我们将当天受理,并且以最快的速度配送,尽快使客户恢复正常生产。

A high quality service always depends on the suitable spare parts' delivery time, Leadway serve to our clients 7 days per week and 24 hours per day. There are enough normal parts stocks in our headquarters and our cooperation and agency area; for special parts, we will accept without delaying a single day, and try our utmost to deliver them, as quickly as possible so as to ensure the speedy restoration of clients' production.