



型 号 09SH

MODEL 09SH

09SH 系列中压空气压缩机

09SH SERIES MIDDLE PRESSURE AIR COMPRESSOR

零部件手册

PARTS LIST

南京尚爱机电有限公司

Nanjing Shangair Mechanical & Electrical Co., Ltd.

南京尚爱机械制造有限公司

Nanjing Shangair Machinery Manufacturing Co., Ltd.

F1 版-SM.LB.09.SH

2016-10-31

Content

Figure A: Outline Drawing of 09SH Single-Engine Unit (horizontal type)错误！未定义书签。

Figure B: Outline Drawing of 09SH Single-Engine Unit (vertical type)..... 4

Figure C: Outline Drawing of 09SH Double-Engine Unit (vertical type)..... 5

Figure D: Outline Drawing of 09SH Three-Engine Unit (vertical type)..... 6

Figure E: Outline Drawing of 09SH Four-Engine Unit (vertical Type)错误！未定义书签。

Figure F: Outline Drawing of 09SH Main Engine 错误！未定义书签。

Breakdown Drawing 1: Crankcase Components (1 set)..... 9

Breakdown Drawing 2: First-Stage Cylinder Piston Conrod Parts (2 sets) 1 2

Breakdown Drawing 3: Second-Stage Cylinder Piston Conrod Parts (1 set).... 1 4

Breakdown Drawing 4: Third-Stage Cylinder Piston Conrod Parts(1 set)..... 1 6

Drawing 5: intercoolers..... 1 8

Table 6: Complete Sealing Gasket List of 09SH Machine Head 1 9

Table 7: Common Electric Components of 09SH Series..... 2 0

Figure 7-1 Circuit Diagram of 09SH Single-Engine Unit..... 2 0

Figure 7-2.1: Main Circuit Diagram of 09SH Series Double-Engine Unit..... 2 2

Figure 7-2.2: Secondary Circuit Diagram of 83S Series Double-Engine Unit... 2 3

Figure 7-2.3: Terminal Connection Diagram of 09SH Series Double-Engine Unit
..... 2 4

Figure 7-3.1: Main Circuit Diagram of 09SH Series Three-Engine Unit..... 2 5

Figure 7-3.2: Secondary Circuit Diagram of 09SH Series Three-Engine Unit.. 2 6

Figure 7-3.3: Secondary Circuit Diagram of 09SH Series Three-Engine Unit错误！未定义书签。

Figure 7-3.4: Terminal Connection Diagram of 09SH Series Three-Engine Unit 错误！未定义书签。

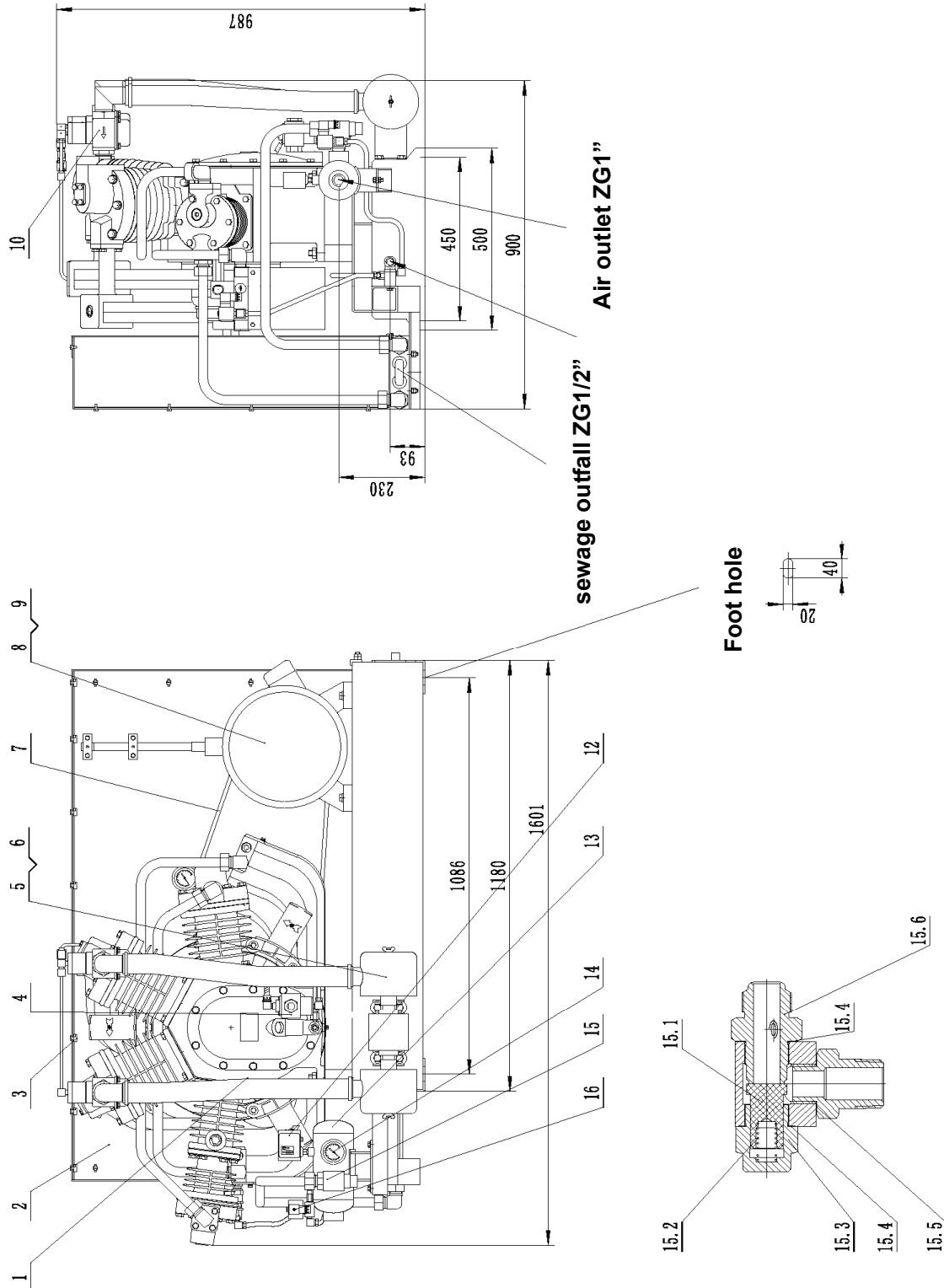
Figure 7-4.1: Main Circuit Diagram of 09SH Series Four-Engine Unit错误！未定义书签。

Figure 7-4.2: Secondary Circuit Diagram of 09SH Series Four-Engine Unit...错误！未定义书签。

Figure 7-4.3: Secondary Circuit Diagram of 09SH Series Four-Engine Unit...错误!
未定义书签。

Figure 7-4.4: Terminal Connection Diagram of 09SH Series Four-Engine Unit 3 1

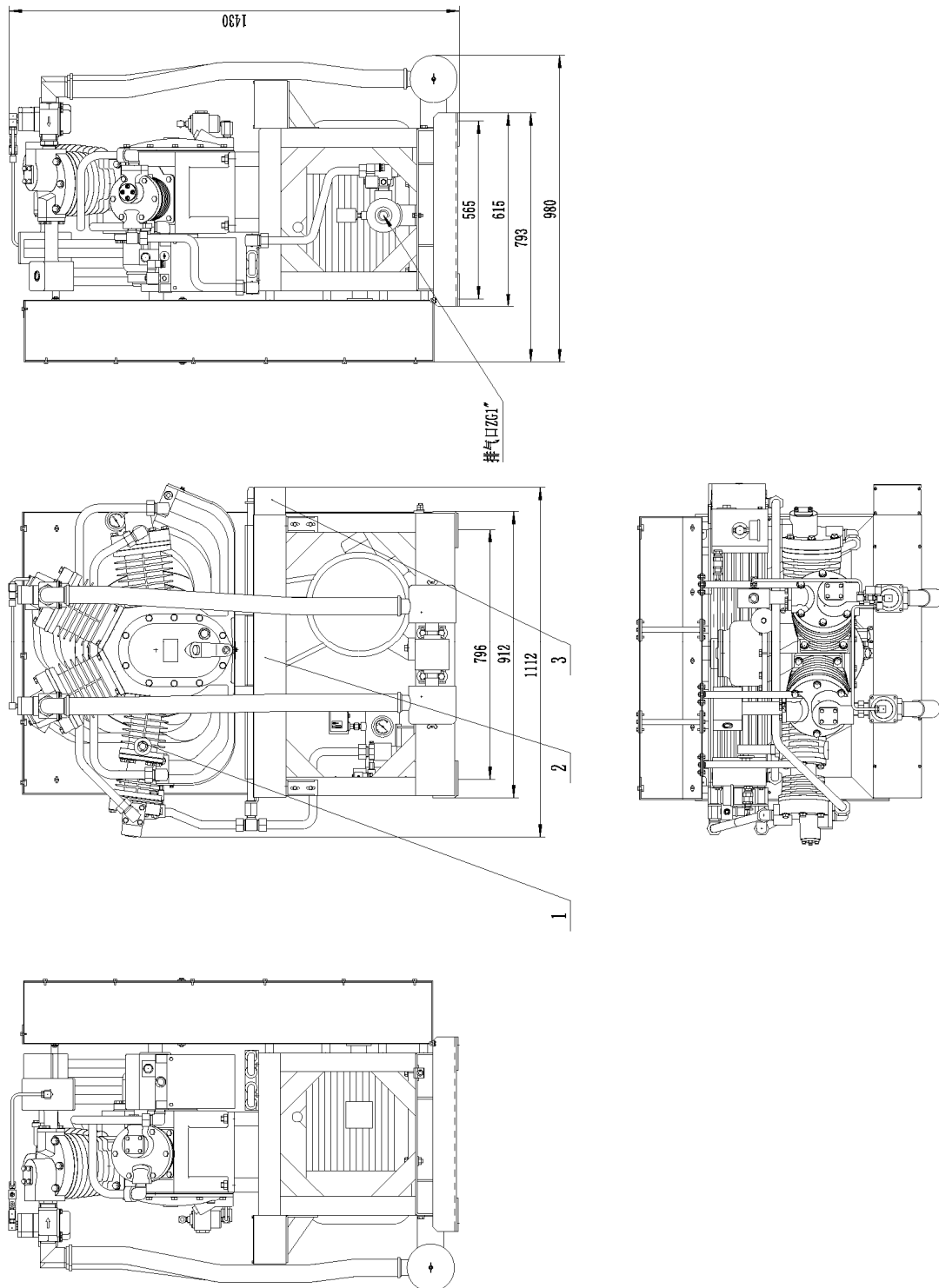
Figure A: Outline Drawing of 09SH Single-Engine Unit (horizontal type)



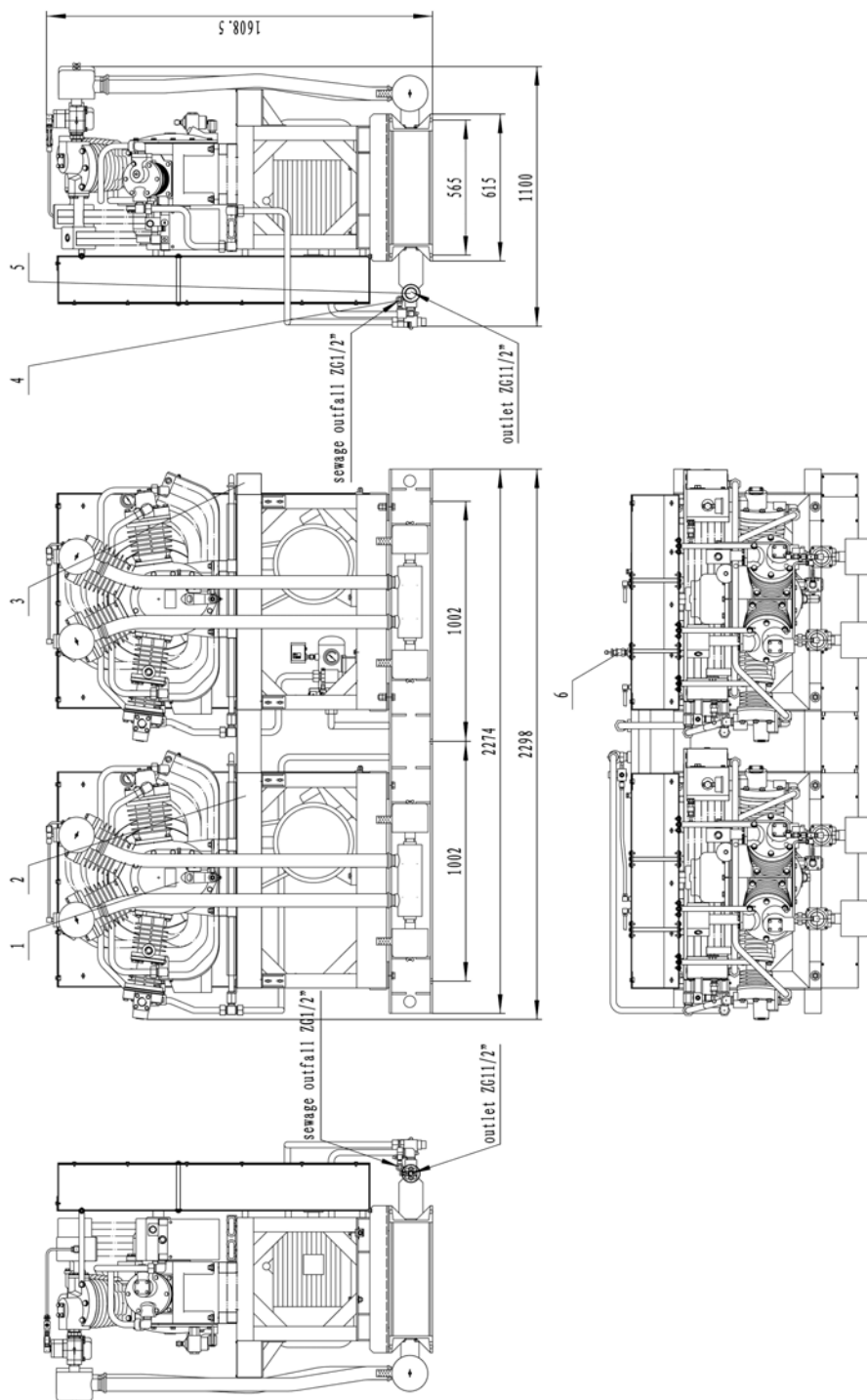
S/N	Code	Specification,chart	Name	Qty	Remark
-----	------	---------------------	------	-----	--------

		No.			
A-01	2000-09SH	09SH main machine	main machine	1	
A-02	3016-831H0001	83.1H.00.01	Protection net	1	
A-03	3017-JT090039	JT.09.00.39	Locking clasp 3	16	
A-04	2017-DY030000	DY.03.00.00	Low oil-level protection switch	1	
A-04.1	3401-019	Stainless steel level switch LASS1A35 (120°)	Level switch	1	
A-05	3404-004	Suction muffler G11/2"-G11/2"	Suction muffler	2	
A-06	3404-009	Suction muffler filter core	filter core	2	
A-07	3602-003	Triangle belt B2464	Triangle belt	4	09SH-1540
A-07	3602-011	Triangle belt B2743	Triangle belt	4	09SH-1840
A-08	3102-006	Y2-160L-4-15	Motor 15KW	1	09SH-1540
A-08	3102-007	Y2-180M-4-18.5	Motor 18.5KW	1	09SH-1840
A-09	3020-PD010002	PDL.01.00.02	Belt wheel 232*670	1	09SH-1540
A-09	3020-PD030006	PDL.03.00.06	Belt wheel 253*730	1	09SH-1840
A-10	2017-XF030000	XF.03.00.00	suction valve	2	
A-11	3015-09SH1H03	09.SH.1H.03	aftercooler	1	
A-12	3401-002	Pressure switch KP6(060-5190)	Danfoss	1	
A-13	3015-YQ330100	YQ.33.01.00	Air tank 108*275	1	
A-14	3405-010	YZ60-6.0/M14*1.5/ (axial)	Pressure gauge	1	
A-15	3020-RD050A00	RD.05.0A.00	Stainless steel Vessel check valve	1	
A-15.1	3020-RD050AA5	RD.05.0A.A5	Valve core	1	
A-15.2	3020-RD010004	RD.01.00.04	Spring	1	
A-15.3	3020-RD050A04	RD.05.0A.04	Stainless steel guide body	1	
A-15.4	3020-RD050009	RD.05.00.09	Copper pad 38*31*1	2	
A-15.5	3020-RD050010	RD.05.00.10	Copper pad 35*28*1	1	
A-15.6	3020-RD050A01	RD.05.0A.01	Stainless steel valve body	1	
A-16	3402-001	Solenoid valve 8.0Mpa-1/4NPT-220V-stainless steel	Solenoid valve	2	

Figure B: Outline Drawing of 09SH Single-Engine Unit (vertical type)



1、09SH 2、Cable Tray 3、Outer Connection Box

Figure C: Outline Drawing of 09SH Double-Engine Unit (vertical type)


- 1、09SH single-engine unit 2、cable tray 3、outer connection box
 4、drainage pipe 5、outlet pipe 6、safety valve

S/N	Code	Specification, chart No.	Name	Qty	Remark
C-6	3403-AQ01304 4	AQ.01.30.44	Middle-pressure safety valve	1	4.4MPa-ZG1/2"

Figure D: Outline Drawing of 09SH Three-Engine Unit (vertical type)

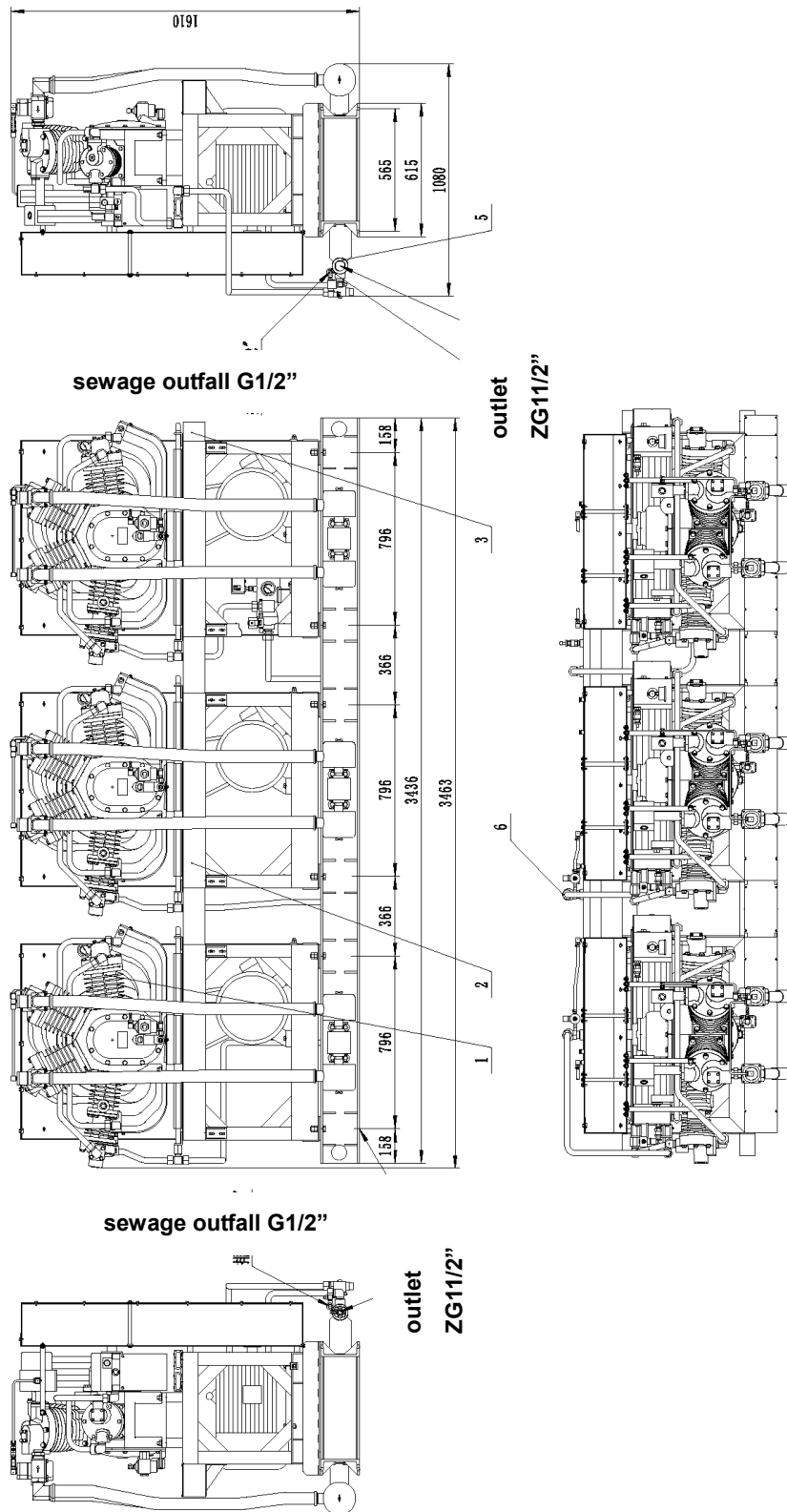


Figure E: Outline Drawing of 09SH Four-Engine Unit (vertical Type)

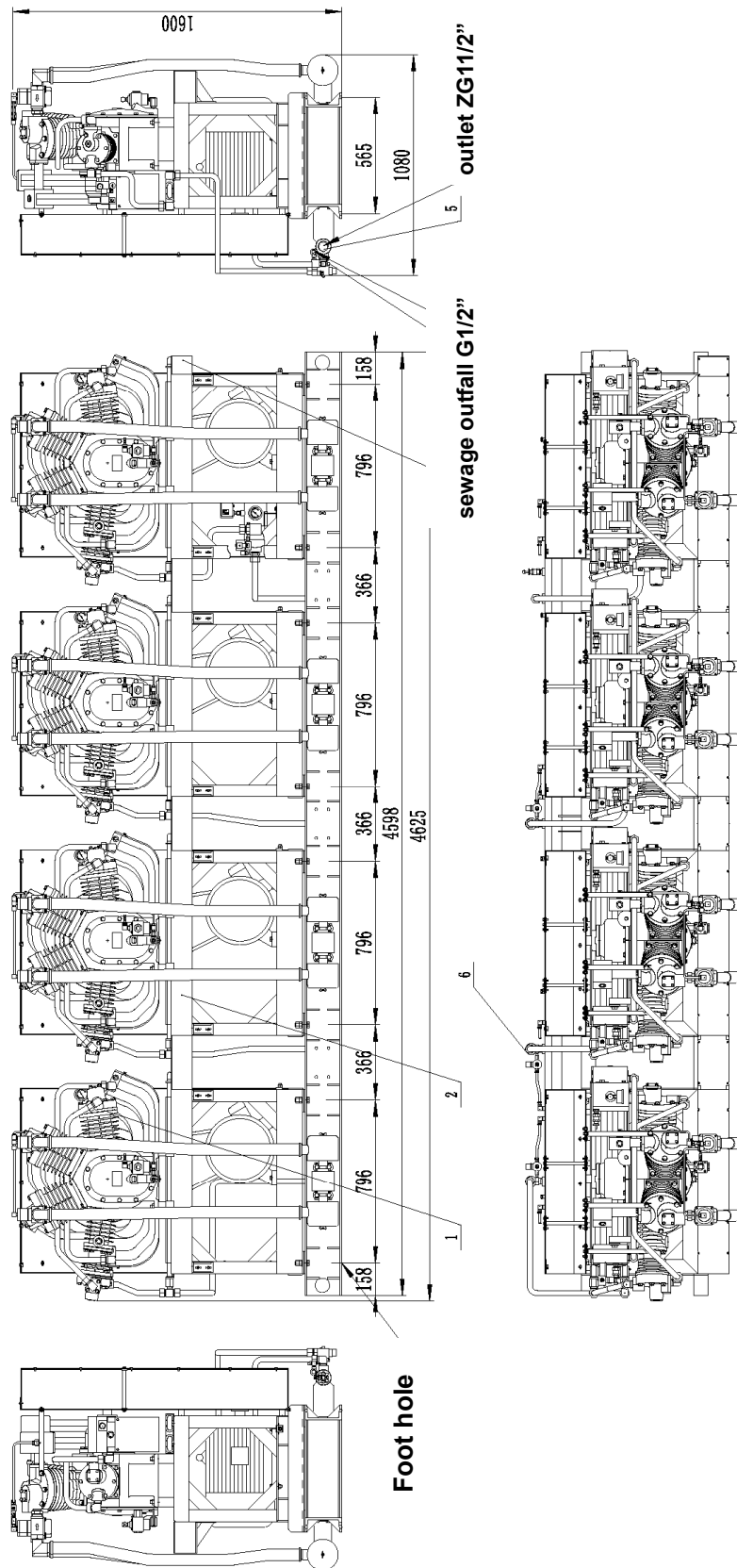
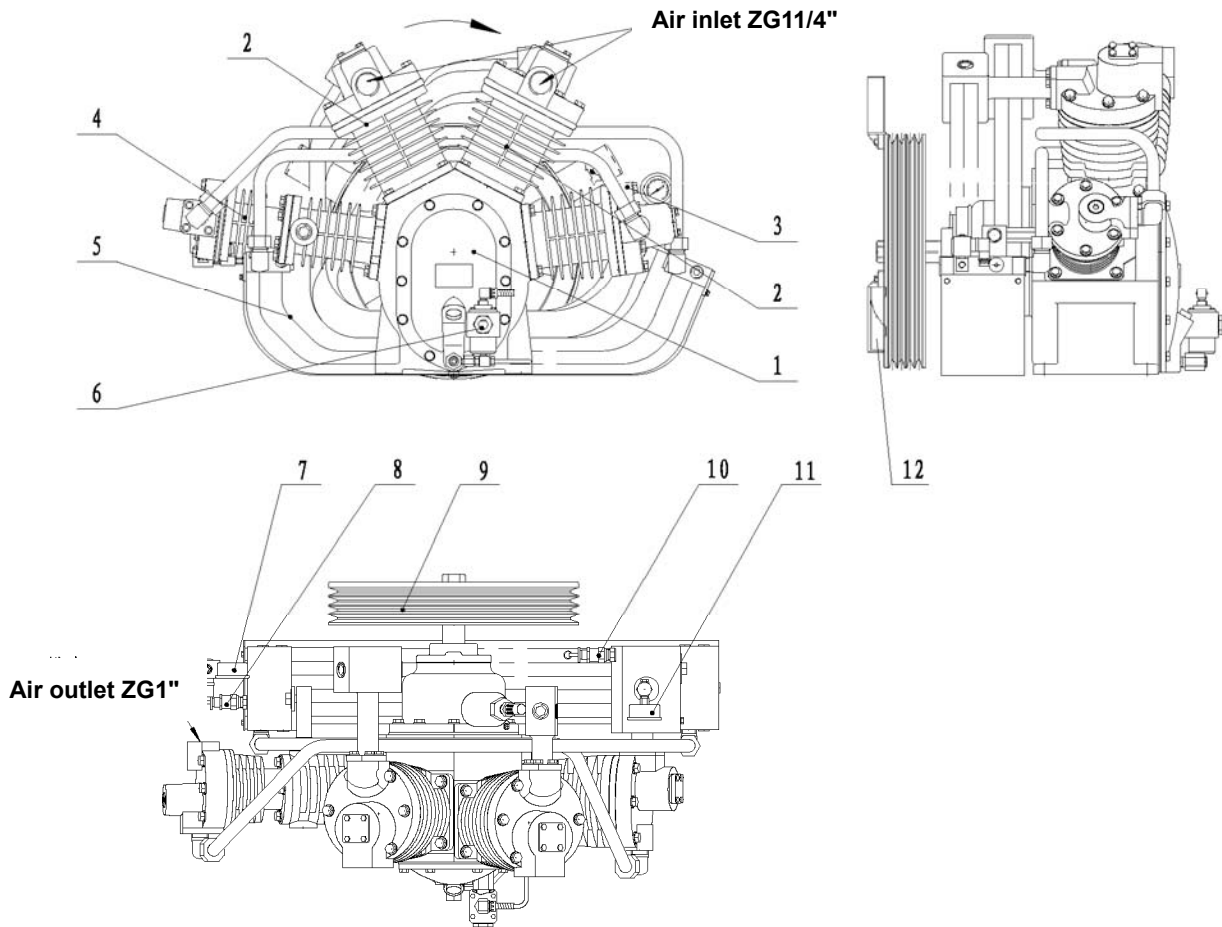
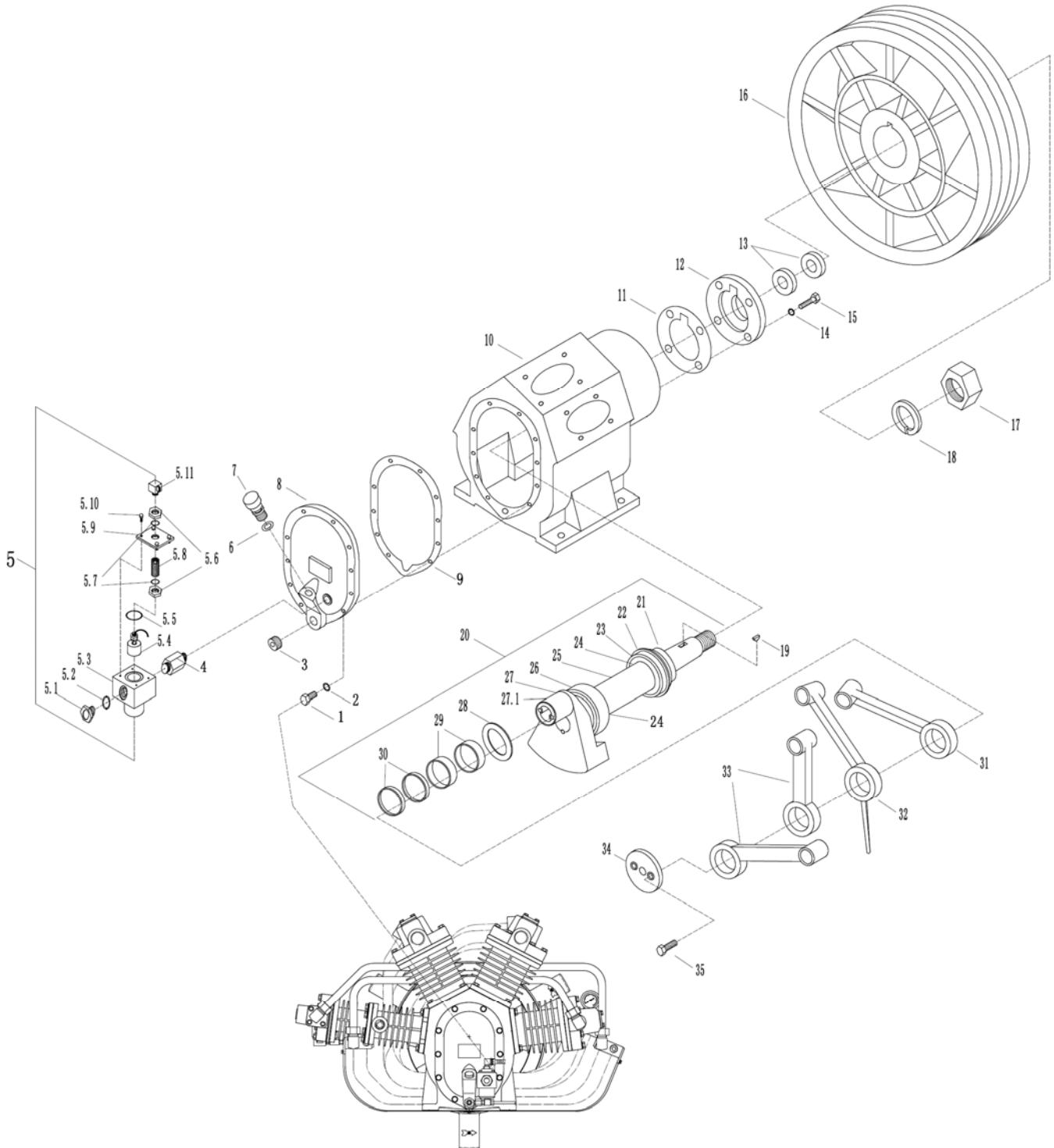


Figure F: Outline Drawing of 09SH Main Engine



S/N	Code	Specification, chart No.	Name	Qty	Remark
F-01		drawing 1	Crankcase parts	1	
F-02		drawing 2	First-stage cylinder piston parts	2	
F-03		drawing 3	second-stage cylinder piston parts	1	
F-04		drawing 4	third-stage cylinder piston parts	1	
F-05		drawing 5	intercooler	1	
F-06	3710-001	Half synthetic oil 4503/68#	Lubricant	4L	
F-07	3405-004	pressure gauge Y60-4.0/M14*1.5/ Radial	pressure gauge	1	
F-08	3403-AQ051011	AQ.05.10.11	Safety valve 1.1Mpa-G1/2	1	
F-09	3002-0901001A	09.01.00.1A	Fan wheel	1	
F-10	3403-AQ060404	AQ.06.04.04	Safety valve 0.4Mpa-G1/2	1	
F-11	3405-006	pressure gauge YZ60-1.0/M14*1.5	1 stage pressure gauge (Axial)	1	
F-12	3012-83000009-01	83.00.00.09-01	Plastic fan	3	

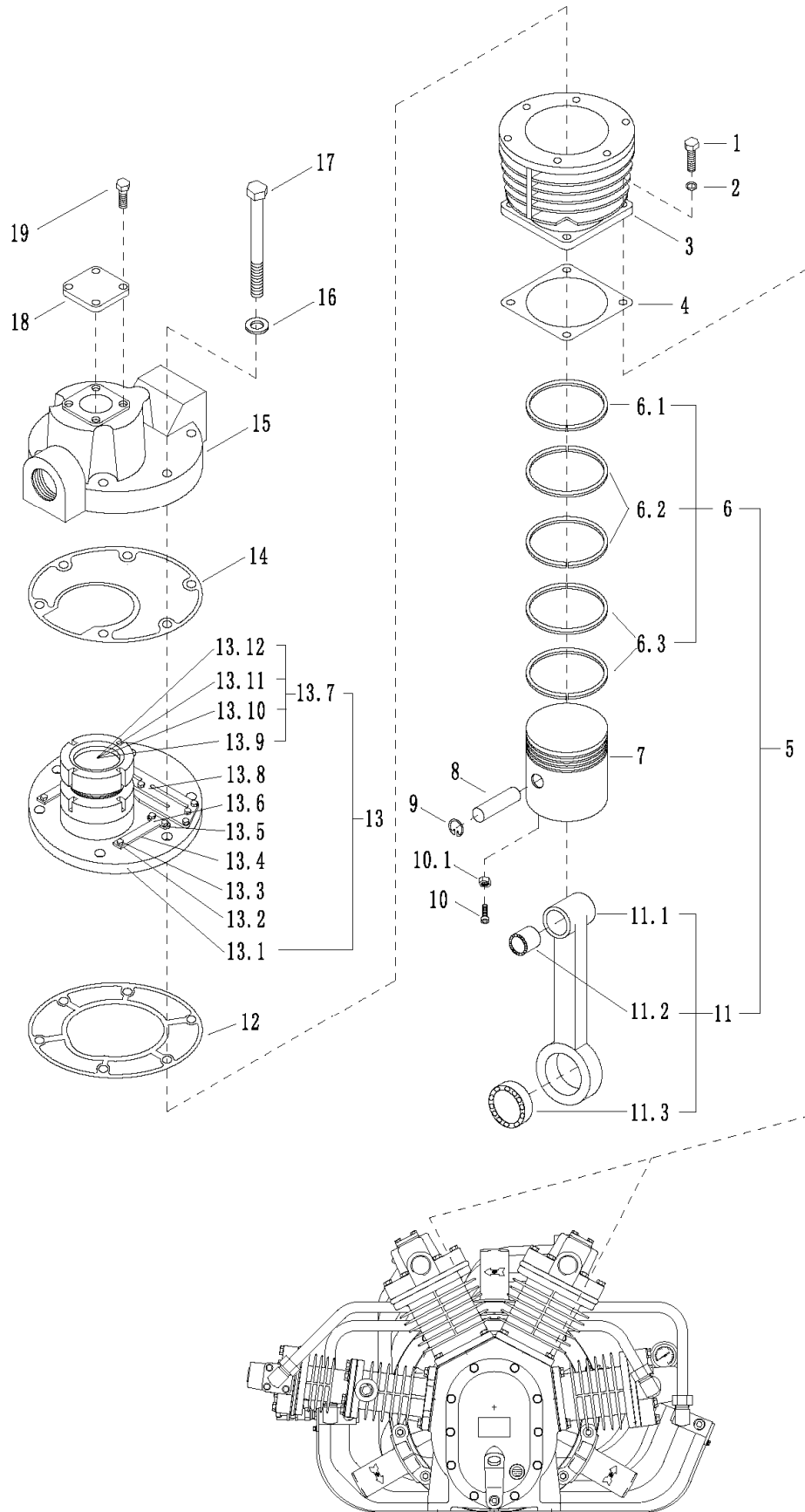
Breakdown Drawing 1: Crankcase Components (1 set)



S/N	Code	Chart No.	Name	Qty	Remark
1-01	3501-003	Bolt M10*30-8.8	Bolt	10	
1-02	3505-014	Flat washer 10(red copper)	Flat washer	10	
1-03	3020-JT040012	JT.04.00.12	Oil outlet plug ZG1/2"	1	
1-04	3020-DY030006	DY.03.00.06	connection screw 40	1	
1-05	2017-DY030000	DY.03.00.00	Low oil level switch M27*1.5	1	
1-05.1	3020-YB010000	YB.01.00.00	Oil indicator M27*1.5	1	
1-05.2	3603-011	O ring 25*3.55	O ring	3	
1-05.3	3020-DY030001	DY.03.00.01	Low oil valve body	1	
1-05.4	3401-018	Stainless steel liquid level switch 1045-G	Stainless steel liquid level switch	1	
1-05.5	3603-015	O ring 43.7*1.8	O ring	1	
1-05.6	3020-DY030004	DY.03.00.04	Nut M20*1.5	2	
1-05.7	3603-002	O ring 15*2.65	O ring	2	
1-05.8	3020-DY030003	DY.03.00.03	Adjustment screwM20*1.5	1	
1-05.9	3020-DY030002	DY.03.00.02	Low oil valve body cap	1	
1-05.10	3501-035	stainless steel bolt M5*12	stainless steel bolt	4	
1-05.11	3020-JT020026	JT.02.00.26	union elbowM16*1.5-G1/4"	1	
1-06	3603-010	O ring 23.5*3.55	O ring	1	
1-07	3012-09010006	09.01.00.06	Oil filling cap	1	
1-08	3003-09SH0006	09.SH.00.06	Crankcase cover	1	
1-09	3014-09SH0009	09.SH.00.09	Crankcase cover gasket	1	
1-10	3001-09SH0100	09.SH.01.00	Crankcase assy	1	
1-11	3014-09010008	09.01.00.08	Paper gasket for bearing end cover	1	
1-12	2017-09010200	09.01.02.00	Bearing end cover	1	
1-13	3604-002	Lip-type sealing ring FB45*62*12	Lip-type sealing ring	2	Need to stock
1-14	3505-014	Flat washer 10(red copper)	Flat washer (red copper)	4	
1-15	3501-003	Bolt M10*30-8.8	Bolt	4	
1-16	3002-0901001A	09.01.00.1A	Fan wheel (09SH only)	1	Same as F-10
1-17	3504-007	Nut M30*2	Nut	1	
1-18	3505-004	Spring Gasket 30	Spring Gasket	1	
1-19	3506-001	Semicircula key 6*10*25	Semicircula key	1	
1-20	2011-09SH0500	09.SH.05.00	Crankshaft assy	1	
1-21	3012-09040005	09.04.00.05	Hot pressing circlip	1	
1-22	3012-09040006	09.04.00.06	Stop circlip	1	
1-23	3601-014	NUP309EN-TVP2	Cylindrical roller bearing	1	
1-24	3012-09040007	09.04.00.07	Washer 56*45	2	
1-25	3012-09040004	09.04.00.04	Bushing	1	
1-26	3601-018	NUP409E-TVP2	Cylindrical roller bearing	1	

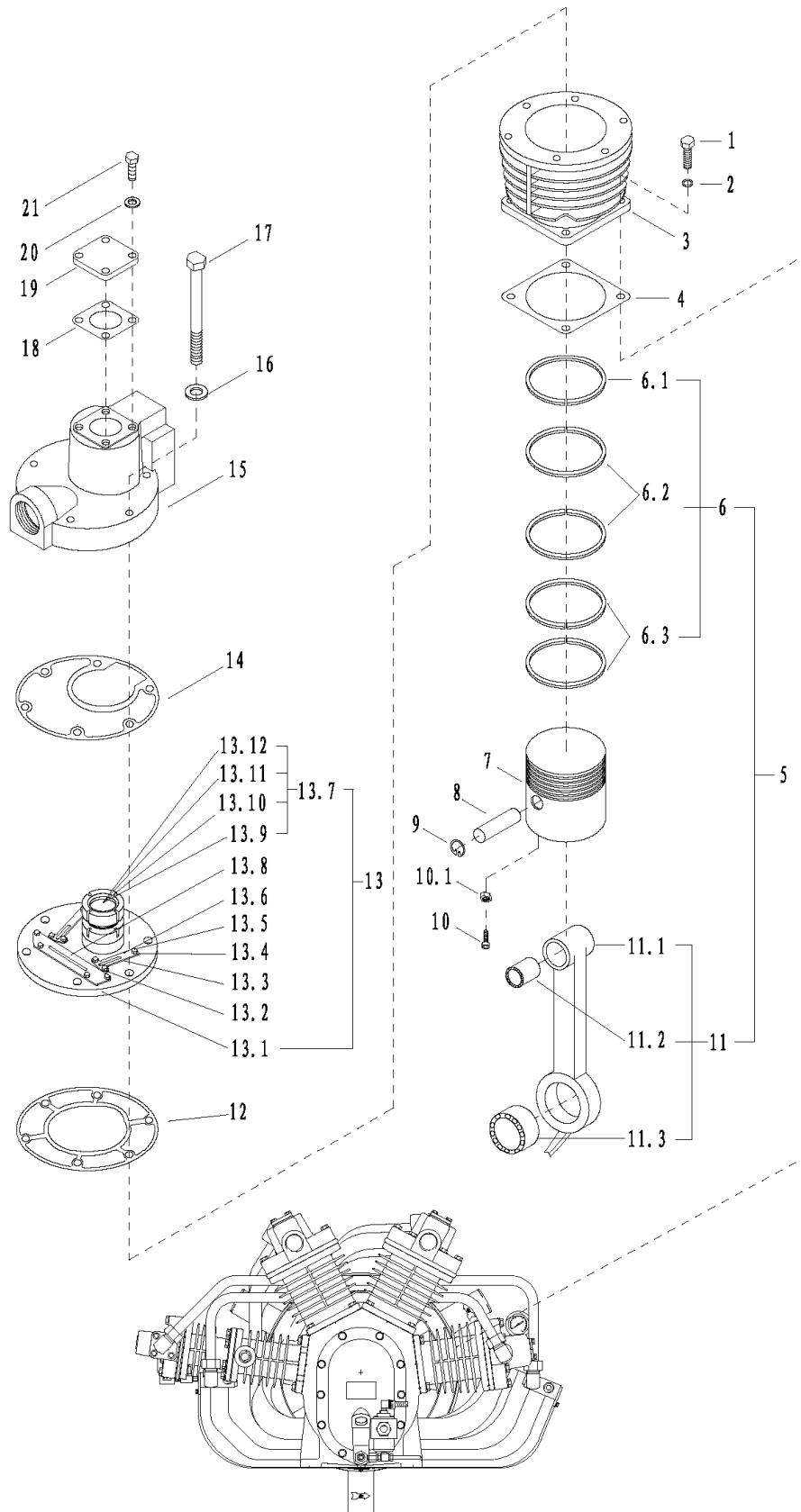
1-27	2021-09SH0501	09.SH.05.01	Crank components	1	
1-27.1	3712-001	LOCTITE 620	LOCTITE Glue	0.5	Bottle
1-28	3012-09040008	09.04.00.08	Stop circlip	1	
1-29	3601-004	NA55*80*25-02	Inner ring 63.3*55*25	2	
1-30	3601-002	NA55*80*18-02	Inner ring 63.3*55*18	2	
1-31	2015-09SH0401	09.SH.04.01	Connecting rod 25GG without oil needle	1	
1-32	2015-09SH0301	09.SH.03.01	Connecting rod 25GG with long oil needle	1	
1-33	2015-09SH0201	09.SH.02.01	Connecting rod 17GG without oil needle	2	
1-34	3012-09WM0004	09.WM.00.04	Baffle	1	
1-35	3501-036	BoltM10*20	Bolt	2	

Breakdown Drawing 2: First-Stage Cylinder Piston Conrod Parts (2 sets)



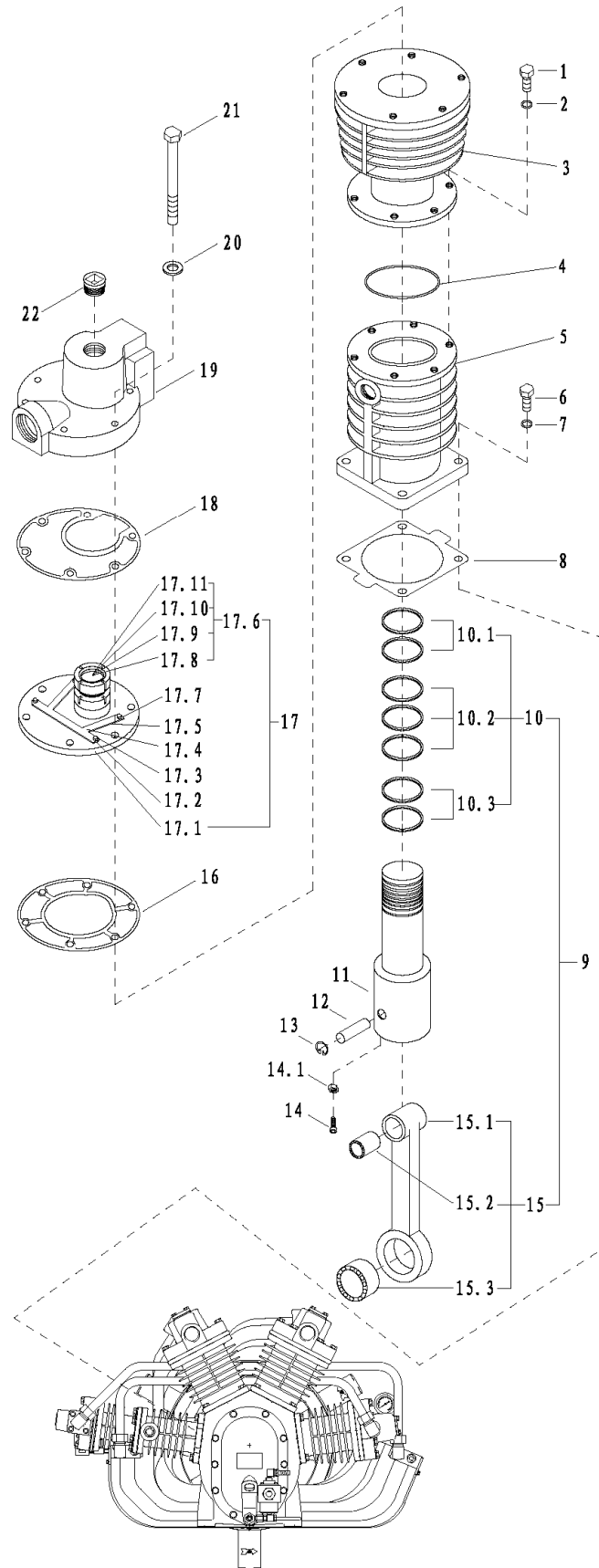
S/N	Code	Chart No.	Name	Qty	Remark
2-01	3501-008	Bolt M12*35-8.8	Bolt	4	
2-02	3505-015	Flat washer 12	Flat washer	4	
2-03	3005-09010015	09.01.00.15	cylinder 130	1	
2-04	3014-09010016	09.01.00.16	Cylinder gasket	1	
2-05	2012-09SH0200	09.SH.02.00	1 st stage piston & connecting rod parts	1	
2-06	3605-H130-122	H130-122	130 Piston ring -122	1	
2-06.1	3605-H130-01	H130-01	130 Barrel-face ring	1	
2-06.2	3605-H130-02	H130-02	130 Taper-face ring	2	
2-06.3	3605-H130-03	H130-03	130 Oil scraper ring	2	
2-07	3009-09020006	09.02.00.06	Piston130	1	
2-08	3011-09020005	09.02.00.05	piston pin 25*118*6/130	1	
2-09	3506-006	Circlip 25	Circlip	2	
2-10	3502-008	Hexagon bolt M8*25	Hexagon bolt	2	
2-10.1	3504-012	Nut M8	Nut	2	
2-11	2015-09SH0201	09.SH.02.01	Connecting rod without oil needle 17GG(bearing included)	1	
2-11.1	3010-09SH0003	09.SH.00.03	Connecting rod shaft	1	
2-11.2	3601-020	RNA25*37*30	Roller bearing	1	
2-11.3	3601-001	NA55*80*18-01	Roller bearing 80*63.3*18/	1	
2-12	3014-09010014	09.01.00.14	Bottom paper gasket of the first-stage valve board	1	
2-13	2013-09060000	09.06.00.00	Gas valve components 130	1	
2-13.1	3006-09060001	09.06.00.01	1 st stage gas valve board	1	
2-13.2	3012-11060003	11.06.00.03	Retaining washer 2	8	
2-13.3	3501-022	Bolt M5*16-8.8	Bolt	16	
2-13.4	3021-09060003	09.06.00.03	Reed valve plate 0.6*5.1	8	
2-13.5	3012-11060004	11.06.00.04	Retaining washer 3	5	
2-13.6	3012-09070003	09.07.00.03	Lift retaining board	2	
2-13.7	3020-ZL010000	ZL.01.00.00	Direct-flow valve	1	
2-13.8	3012-09060002	09.06.00.02	1 st stage lift retaining board	1	
2-13.9	2013-ZL010100	ZL.01.01.00	Direct-flow valve core assy	1	
2-13.10	3021-ZI01A004	ZL.01.A0.04	Reed valve plate 0.457*4.1	10	
2-13.11	3501-059	Bolt M4*6-8.8	Bolt	10	
2-13.12	3603-019	O ring 57*2.8	O ring	1	
2-14	3014-09010013	09.01.00.13	Upper gasket of 1 st stage valve board	1	
2-15	3007-09010012	09.01.00.12	1 st stage cylinder cover	1	
2-16	3505-015	Flat washer 12	Flat washer	6	
2-17	3501-014	Bolt M12*65-8.8	Bolt	6	
2-18	3019-07010013	07.01.00.13	Sealing cover	1	
2-19	3501-031	Bolt M8*20	Bolt	4	

Breakdown Drawing 3: Second-Stage Cylinder Piston Conrod Parts (1 set)

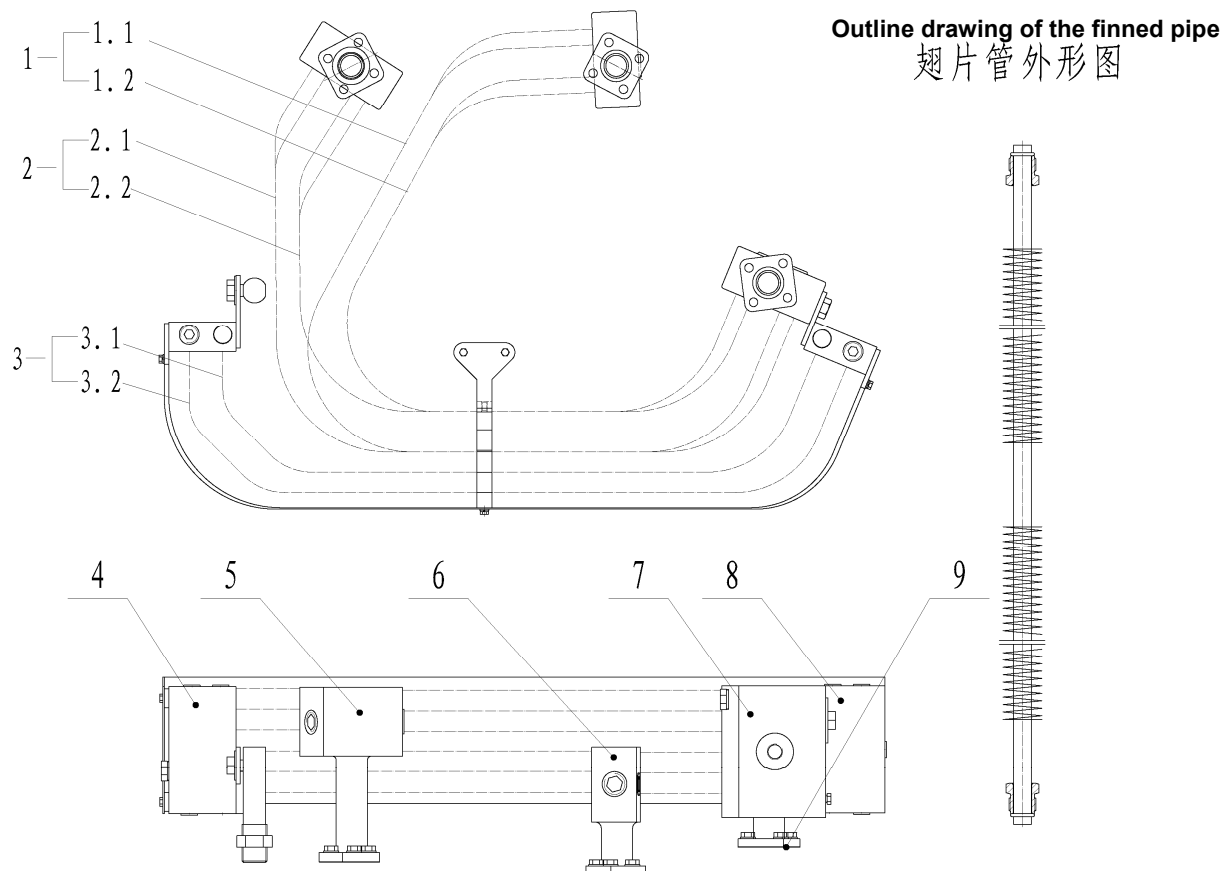


S/N	Code	Chart No.	Name	Qty	Remark
3-01	3501-008	Bolt M12*35-8.8	Bolt	4	
3-02	3505-015	Flat washer 12	Flat washer	4	
3-03	3005-09010017	09.01.00.17	cylinder 100	1	
3-04	3014-09010016	09.01.00.16	Cylinder gasket	1	
3-05	2012-09SH0300	09.SH.03.00	2 nd stage piston & connecting rod components	1	
3-06	3605-H100-122	H100-122	100 Piston rings -122	1	
3-06.1	3605-H100-01	H100-01	100 Piston ring - chrome barrel	1	
3-06.2	3605-H100-02	H100-02	100 Piston ring - chrome taper	2	
3-06.3	3605-H100-03	H100-03	100 Piston ring - scrap oil	2	
3-07	3009-09030002	09.03.00.02	Piston100*25	1	
3-08	3011-09030006	09.03.00.06	Piston Pin 25*88	1	
3-09	3506-006	Circlip 25	Circlip	2	
3-10	3502-002	Bolt M6*25	Bolt	2	
3-10.1	3504-011	Nut M6	Nut	2	
3-11	2015-09SH0301	09.SH.03.01	connecting rod with long oil needle 25GG(bearing included)	1	
3-11.1	3010-09SH0005	09.SH.00.05	Connecting rod with long oil needle 25GG	1	
3-11.2	3601-020	RNA25*37*30	roller bearing	1	
3-11.3	3601-003	NA55*80*25-01	roller bearing 80*63.3*25	1	
3-12	3014-09010018	09.01.00.18	bottom gasket of the 2 nd stage valve board	1	
3-13	2013-09070000	09.07.00.00	2 nd gas valve components 100-83	1	
3-13.1	3006-09070001	09.07.00.01	2 nd gas valve 100	1	
3-13.2	3012-11060004	11.06.00.04	Lift retainer washer 3	5	
3-13.3	3021-09060003	09.06.00.03	Reed valve plate 0.6*5.1	5	
3-13.4	3012-11060003	11.06.00.03	Lift retainer washer 2	5	
3-13.5	3501-022	Bolt M5*16-8.8	Bolt	10	
3-13.6	3012-09070003	09.07.00.03	Lift retaining board	2	
3-13.7	3020-ZL020000	ZL.02.00.00	Direct flow vavle	1	
3-13.8	3012-09070002	09.07.00.02	2 nd stage lift retainer board	1	
3-13.9	2013-ZL020100	ZL.02.01.00	Valve core assy	1	
3-13.10	3021-ZL01A004	ZL.01.A0.04	Reed valve plate 0.457*4.1	8	
3-13.11	3501-059	Bolt M4*6-8.8	Bolt	8	
3-13.12	3603-016	O ring 43.7*2.8	O ring	1	
3-14	3014-09010019	09.01.00.19	Upper gasket of 2 nd stage valve board	1	
3-15	3007-09010020	09.01.00.20	2 nd stage cylinder cover	1	
3-16	3505-015	Flat washer 12	Flat washer	6	
3-17	3501-014	Bolt M12*65-8.8	Bolt	6	
3-18	3014-XH030008	XH.03.00.08	1 st & 2 nd stage unloading gasket	1	
3-19	3019-07010013	07.01.00.13	Sealing cover	1	
3-20	3505-021	Flat washer 8	Flat washer (red copper)	4	
3-21	3501-031	Bolt M8*20	Bolt	4	

Breakdown Drawing 4: Third-Stage Cylinder Piston Conrod Parts(1 set)



S/N	Code	Chart No.	Name	Qty	Remark
4-01	3501-008	Bolt M12*35-8.8	Bolt	6	
4-02	3505-015	Flat washer 12	Flat washer	6	
4-03	3005-31010001	31.01.00.01	cylinder 60*133.2	1	
4-04	3603-031	O ring 85*2.65	O ring	1	
4-05	3014-09SH0008	09.SH.00.08	Guide cylinder 80*190	1	
4-06	3501-008	Bolt M12*35-8.8	Bolt	4	
4-07	3505-015	Flat washer 12	Flat washer	4	
4-08	3014-09SH0007	09.SH.00.07	Bottom gasket of guide cylinder	1	
4-09	2012-09SH0400	09.SH.04.00	3rd stage piston & connecting rod parts 60	1	
4-10	3605-H60-232	H60-232	60 Piston ring -232	1	
4-10.1	3605-H60-01	H60-01	60 Piston ring - chrome barrel	2	
4-10.2	3605-H60-02	H60-02	60 Piston ring - chrome taper	3	
4-10.3	3605-H60-03	H60-03	60 Piston ring - scrap oil	2	
4-11	3009-31010002	31.01.00.02	Piston60*80*198	1	
4-12	3011-40040003	40.04.00.03	Piston pin 25*70*6/80	1	
4-13	3506-006	Criclip 25	Criclip	2	
4-14	3502-002	Bolt M6*25	Bolt	2	
4-14.1	3504-011	Nut M6	Nut	2	
4-15	2015-09SH0401	09.SH.04.01	Connecting rod without oil needle 25GG(bearing included)	1	
4-15.1	3010-09SH0004	09.SH.00.04	Connecting rod shank without oil needle 25GG	1	
4-15.2	3601-020	RNA25*37*30	Needle roller bearing	1	
4-15.3	3601-003	NA55*80*25-01	Needle roller bearing 80*63.3*25	1	
4-16	3014-07010010	07.01.00.10	bottom gasket of the 2nd valve board	1	
4-17	2013-07050000	07.05.00.00	gas valve 60-75	1	
4-17.1	3006-07050001	07.05.00.01	2nd gas valve board 70	1	
4-17.2	3012-11060004	11.06.00.04	Lift retaining washer3	1	
4-17.3	3501-022	Bolt M5*16-8.8	Bolt	4	
4-17.4	3012-07050002	07.05.00.02	2nd stage lift retaining board	1	
4-17.5	3021-30020001	30.02.00.01	Reed valve plate 0.8*5.1	3	
4-17.6	3020-ZLA30000	ZL.A3.00.00	Direct flow valve	1	
4-17.7	3012-11060003	11.06.00.03	Lift retaining washer 2	3	
4-17.8	2013-ZLA30100	ZL.A3.01.00	Direct flow valve core assay	1	
4-17.9	3021-ZL010004	ZL.01.00.04	Reed valve plate 0.6*4.1	6	
4-17.10	3501-059	Bolt M4*6-8.8	Bolt	6	
4-17.11	3020-ZLA30007	ZL.A3.00.07	Copper pad	1	
4-18	3014-34010001	34.01.00.01	Upper copper pad of 2nd stage valve board	1	
4-19	3007-83010002	83.01.00.02	cylinder cover	1	
4-20	3505-015	Flat washer 12	Flat washer	6	
4-21	3501-014	Bolt M12*65-8.8	Bolt	6	
4-22	3020-JT040002	JT.04.00.02	Screw plug ZG1"	1	

Drawing 5: intercoolers


S/N	Code	Chart No.	Name	Qty	Remark
5-0	2014-09SH0600	09.SH.06.00	Intercooler components	1	
5-1	3013-09SH06A1	09.SH.06.A1	Finned pipes of stage 1 to stage 2	1set	
5-1.1	3013-09SH06A1-01	09.SH.06.A1-01	Finned pipes 1446(926+520)	3	
5-1.2	3013-09SH06A1-02	09.SH.06.A1-02	Finned pipes 1262(830+432)	3	
5-2	3013-09SH06A2	09.SH.06.A2	1st & 2nd stage Finned pipes	1set	
5-2.1	3013-09SH06A2-01	09.SH.06.A2-01	Finned pipes 1248(728+520)	3	
5-2.2	3013-09SH06A2-02	09.SH.06.A2-02	Finned pipes 1100(653+447)	3	
5-3	3013-09SH06A3	09.SH.06.A3	2nd & 3rd stage intercooler pipes	1set	
5-3.1	3013-09SH06A3-01	09.SH.06.A3-01	Finned pipes 998(471+527)	6	
5-3.2	3013-09SH06A3-02	09.SH.06.A3-02	Finned pipes 1124(539+585)	6	
5-4	3019-83050004	83.05.00.04	Intercooler left gas collecting strip	1	
5-5	3008-09050018	09.05.00.18	1st stage gas collector(central)	1	
5-6	3008-09050017	09.05.00.17	1st stage gas collector(edge)	1	
5-7	3008-09050019	09.05.00.19	2nd stage gas collector	1	
5-8	3019-83050003	83.05.00.03	Intercooler right gas collecting strip	1	
5-9	3014-09050024	09.05.00.24	Gasket, gas collector	3	

Table 6: Complete Sealing Gasket List of 09SH Machine Head
(a summary for the above-mentioned sealing gaskets)

S/N	Code	Chart No.	Name	Qty	Remark
6-01	3014-09SH0009	09.SH.00.09	Crankcase cover gasket	1	Need to stock
6-02	3014-09010008	09.01.00.08	Bearing end cover gasket	1	Need to stock
6-03	3014-09010016	09.01.00.16	Cylinder gasket	3	Need to stock
6-04	3014-09SH0007	09.SH.00.07	Bottom gasket of the guide cylinder	1	Need to stock
6-05	3014-09050024	09.05.00.24	Gas collector gasket	3	Need to stock
6-06	3014-09010014	09.01.00.14	Bottom paper gasket, 1st stage valve board	2	Need to stock
6-07	3014-09010013	09.01.00.13	Upper paper gasket, 1st stage valve board	2	Need to stock
6-08	3014-09010019	09.01.00.19	Upper paper gasket, 2nd stage valve board	1	Need to stock
6-09	3014-09010018	09.01.00.18	Bottom paper gasket, 2nd stage valve board	1	Need to stock
6-10	3014-07010010	07.01.00.10	Bottom paper gasket, 2nd stage valve board	1	Need to stock
6-11	3014-34010001	34.01.00.01	upper red copper gasket, 2nd valve board	1	Need to stock
6-12	3603-011	25*3.55[GB3452.1]	O ring	1	Need to stock
6-13	3603-010	O ring 23.5*3.55	O ring	1	Need to stock
6-14	3603-031	O ring 85*2.65	O ring	1	Need to stock

Table 7: Common Electric Components of 09SH Series

S/N	Code	Chart No.	Name	Brand	Remark
7-01	3305-026	Air switch DZ158-125/3P/100A	Air switch	CHINT	
7-02	3305-028	Air switch DZ47-60/1P/D6A	Air switch	CHINT	
7-03	3301-012	AC contactor LC1-D6511/380V	AC contactor	SCHNEIDER	18.5KW
7-03	3301-011	AC contactor LC1-D5011/380V	AC contactor	SCHNEIDER	15KW
7-04	3302-009	Thermal relay LR2-D3357	Thermal relay	SCHNEIDER	18.5KW
7-04	3302-010	Thermal relay LR2-3355C	Thermal relay	SCHNEIDER	15KW
7-05	3304-001	Intermediate relay JZX-22F(D)/2Z	Intermediate relay	CHINT	
7-06	3303-001	Intermediate relay JSZ3/A-A/30S	Intermediate relay	CHINT	
7-07	3305-006	Auxiliary Contact Module NCF11-11C	Auxiliary Contact Module	CHINT	
7-08	3303-006	Air delay SK4-222	Air delay	DELIXI	
7-09	3305-004	Rotary button NP2-ED21	Rotary button	CHINT	
7-10	3305-024	Auxiliary contact ED101C,102C	Auxiliary contact	CHINT	
7-11	3305-036	Signal light ND16-22DS/4(Signal light	CHINT	
7-12	3305-018	Voltmeter 6L2/0-450V	Voltmeter	CHINT	
7-13	3305-009	Ammeter 6L2/0-100A/5A	Ammeter	CHINT	Single-engine set
7-13	3305-010	Ammeter 6L2/0-200A/5A	Ammeter	CHINT	Double-engine set
7-13	3305-011	Ammeter 6L2/0-300A/5A	Ammeter	CHINT	Three-engine set
7-13	3305-012	Ammeter 6L2/0-400A/5A	Ammeter	CHINT	Four-engine set
7-14	3305-032	Fuser seat & core RT18-32/10A	Fuser seat & core	CHINT	
7-15	3305-013	BH1-0.66-100/5A/Φ30	Current transformer	CHINT	Single-engine set
7-15	3305-015	BH1-0.66-200/5A/Φ30	Current transformer	CHINT	Double-engine set
7-15	3305-016	BH1-0.66-300/5A/Φ30	Current transformer	CHINT	Three-engine set
7-15	3305-017	BH1-0.66-400/5A/Φ40	Current transformer	CHINT	Four-engine set
7-16	3307-007	Timer SH-892A/AC220V	Timer	Guangya	
7-17	3305-023	Terminal UK3N	Terminal	Phoenix	
7-18	3305-019	Terminal TC-1003	Terminal	CHINT	
7-19	3305-020	Terminal TC-1504	Terminal	CHINT	Single- & Double-engine set
7-19	3305-021	Terminal TC-2004	Terminal	CHINT	Three-&Four engine set

Figure 7-1 Circuit Diagram of 09SH Single-Engine Unit

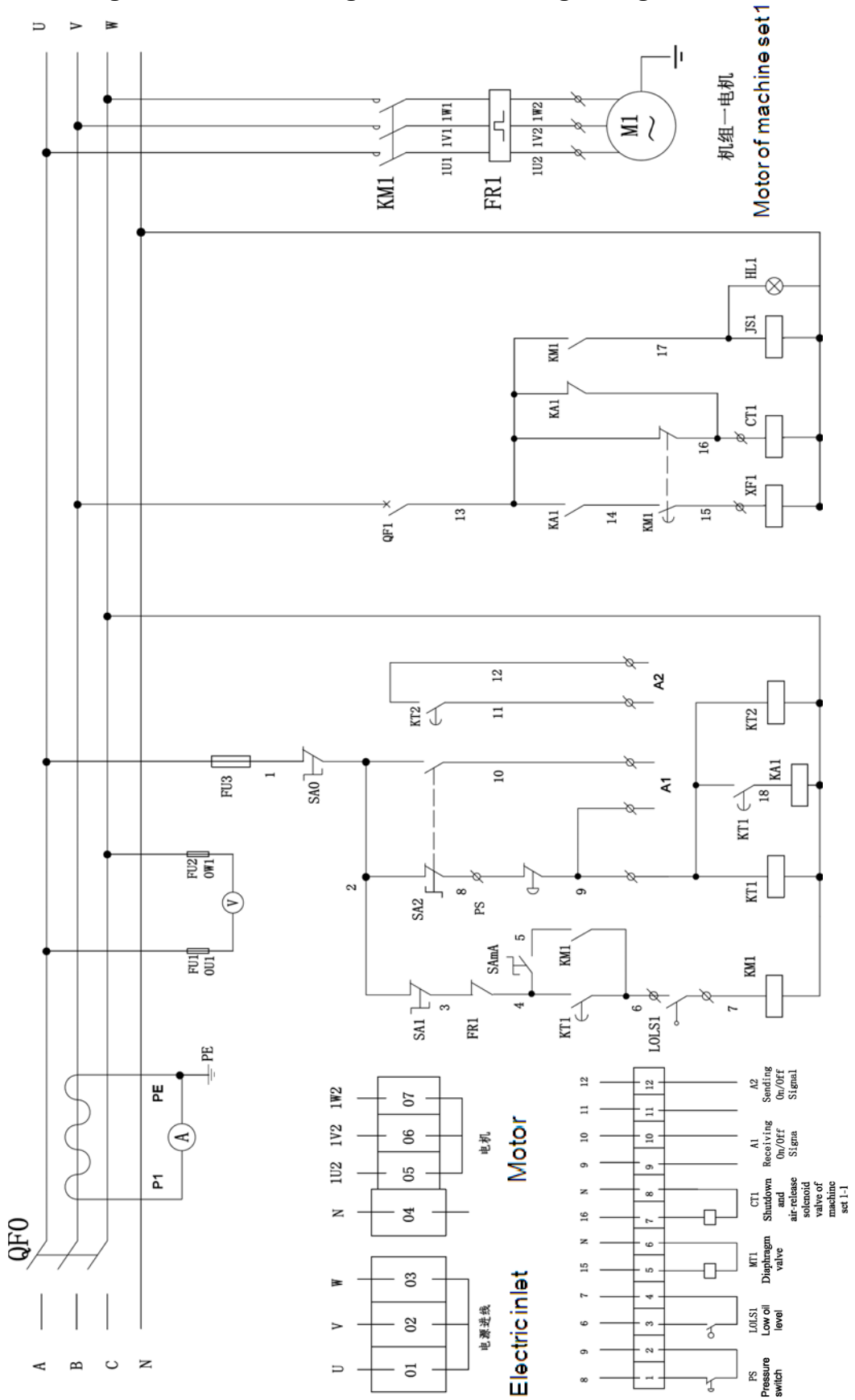


Figure 7-2.1: Main Circuit Diagram of 09SH Series Double-Engine Unit

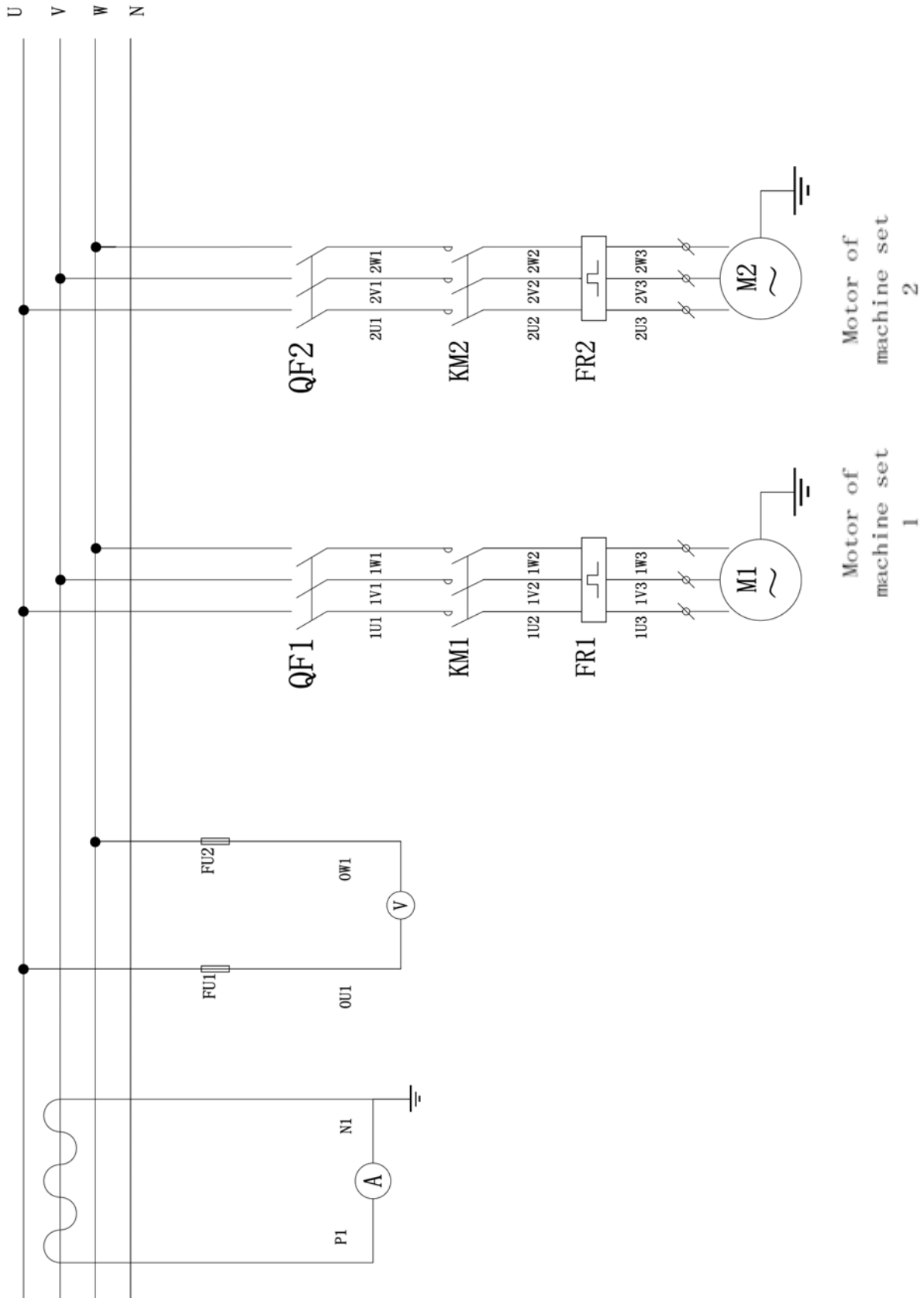


Figure 7-2.2: Secondary Circuit Diagram of 09SH Series Double-Engine Unit

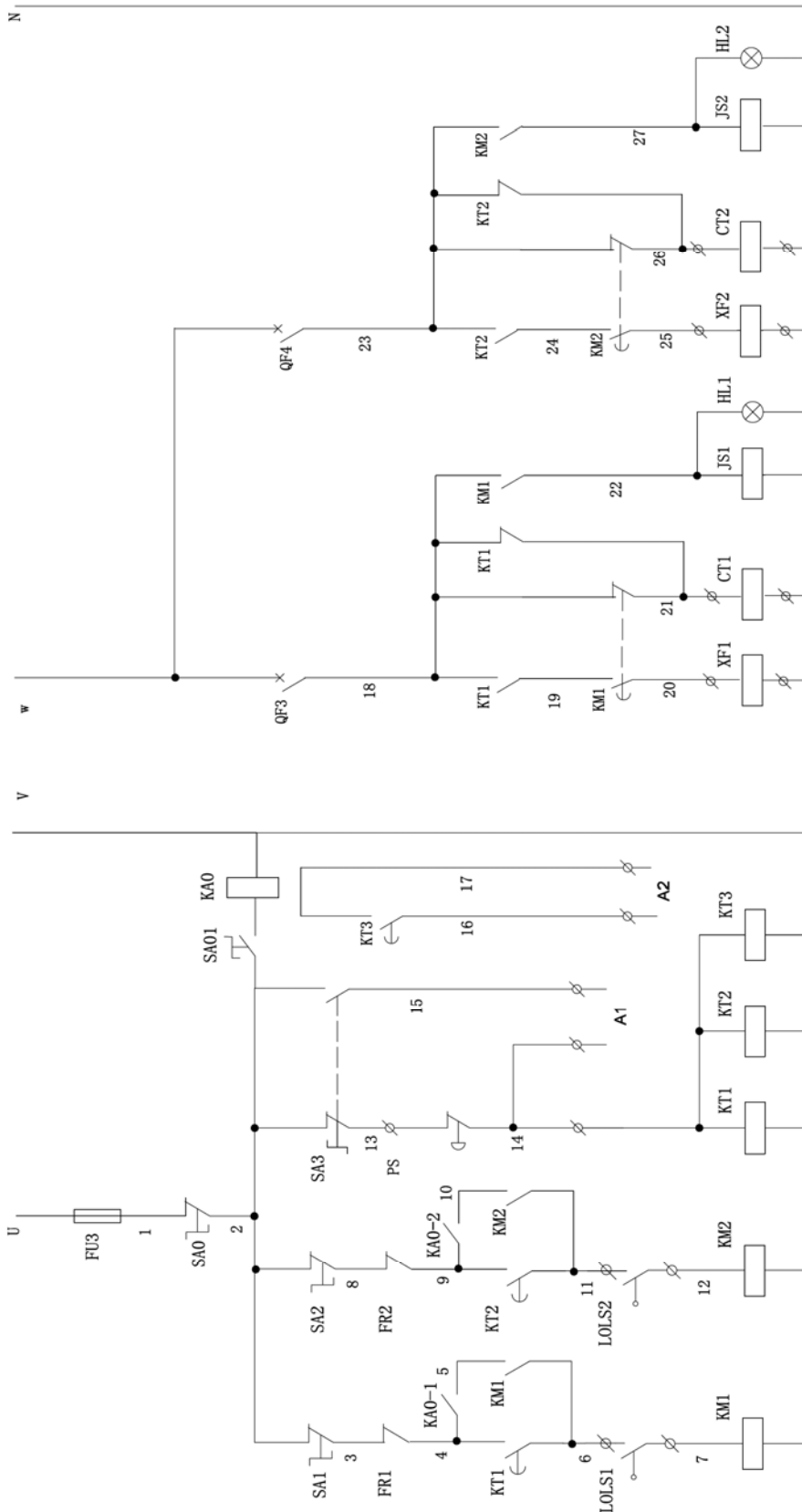


Figure 7-2.3: Terminal Connection Diagram of 09SH Series Double-Engine Unit

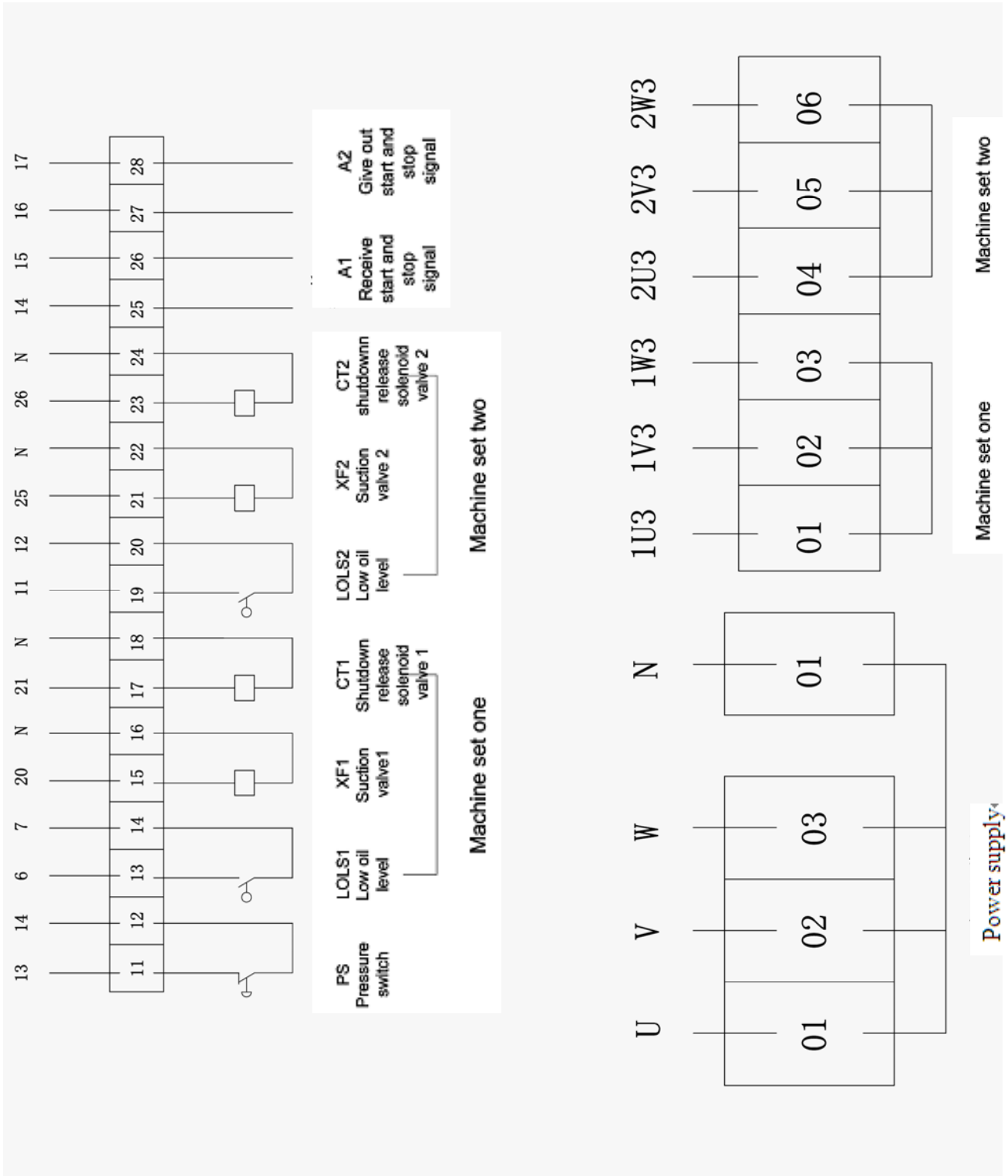


Figure 7-3.1: Main Circuit Diagram of 09SH Series Three-Engine Unit

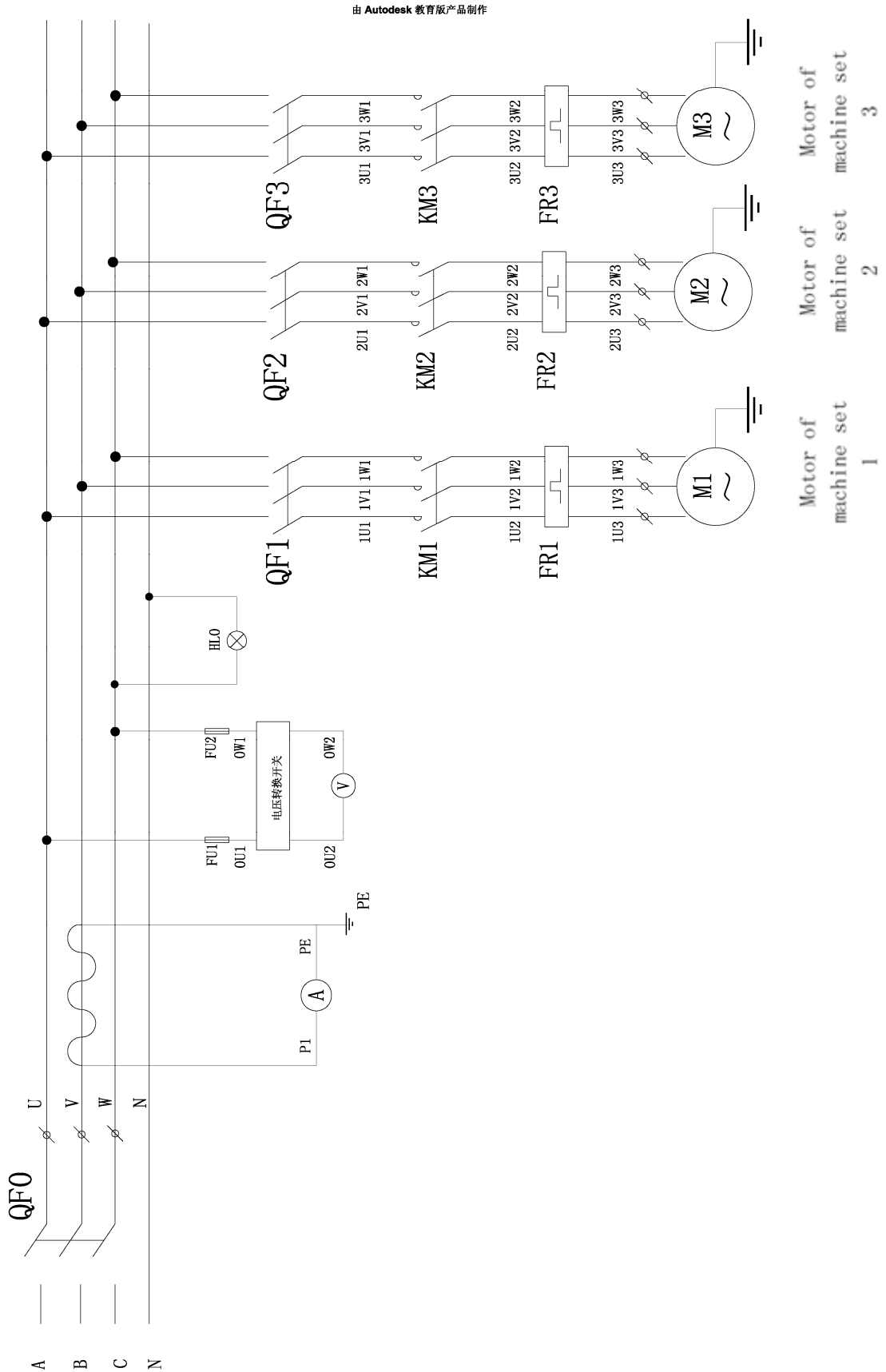


Figure 7-3.2: Secondary Circuit Diagram of 09SH Series Three-Engine Unit

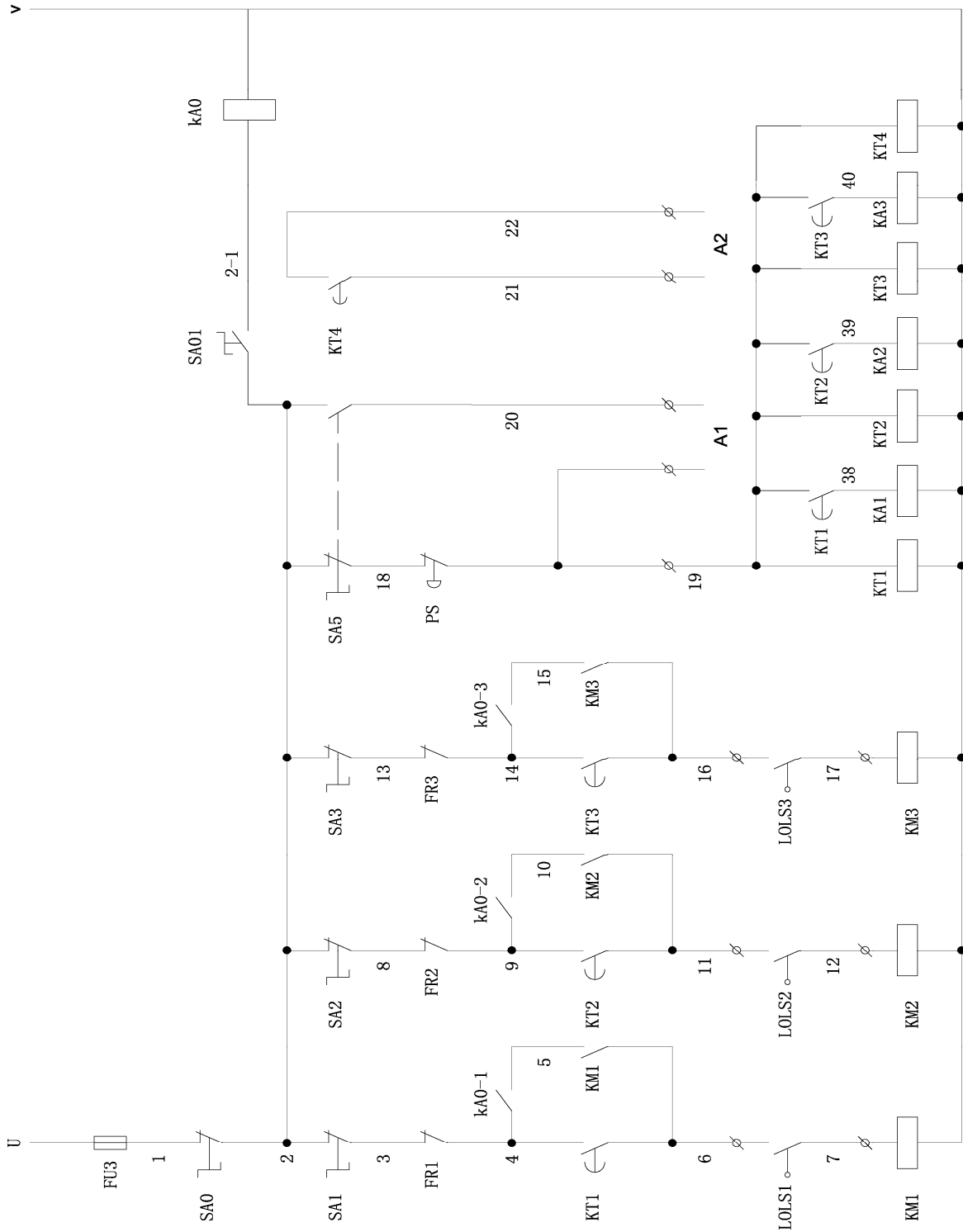


Figure 7-3.3: Secondary Circuit Diagram of 09SH Series Three-Engine Unit

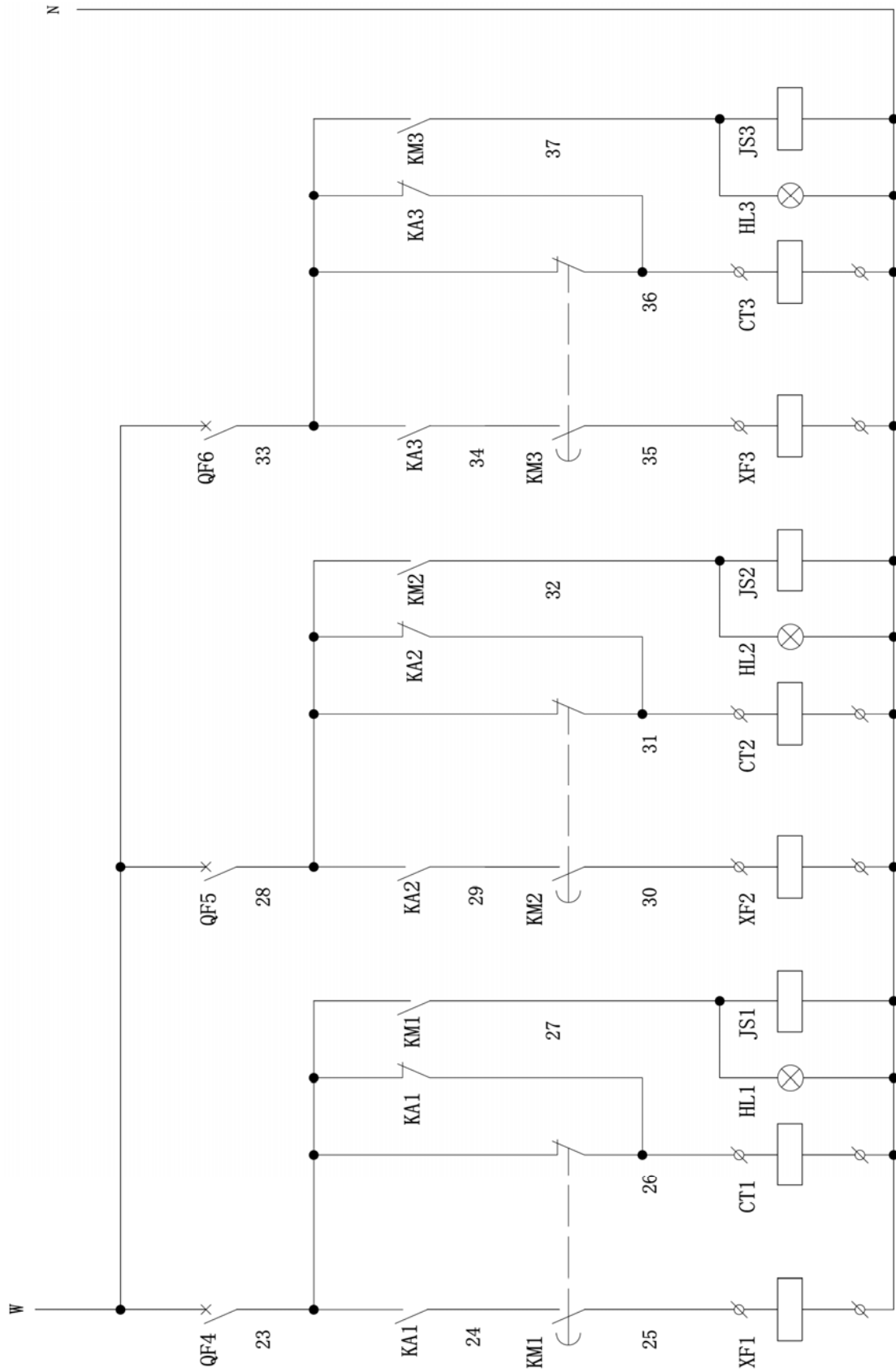


Figure 7-3.4: Terminal Connection Diagram of 09SH Series Three-Engine Unit

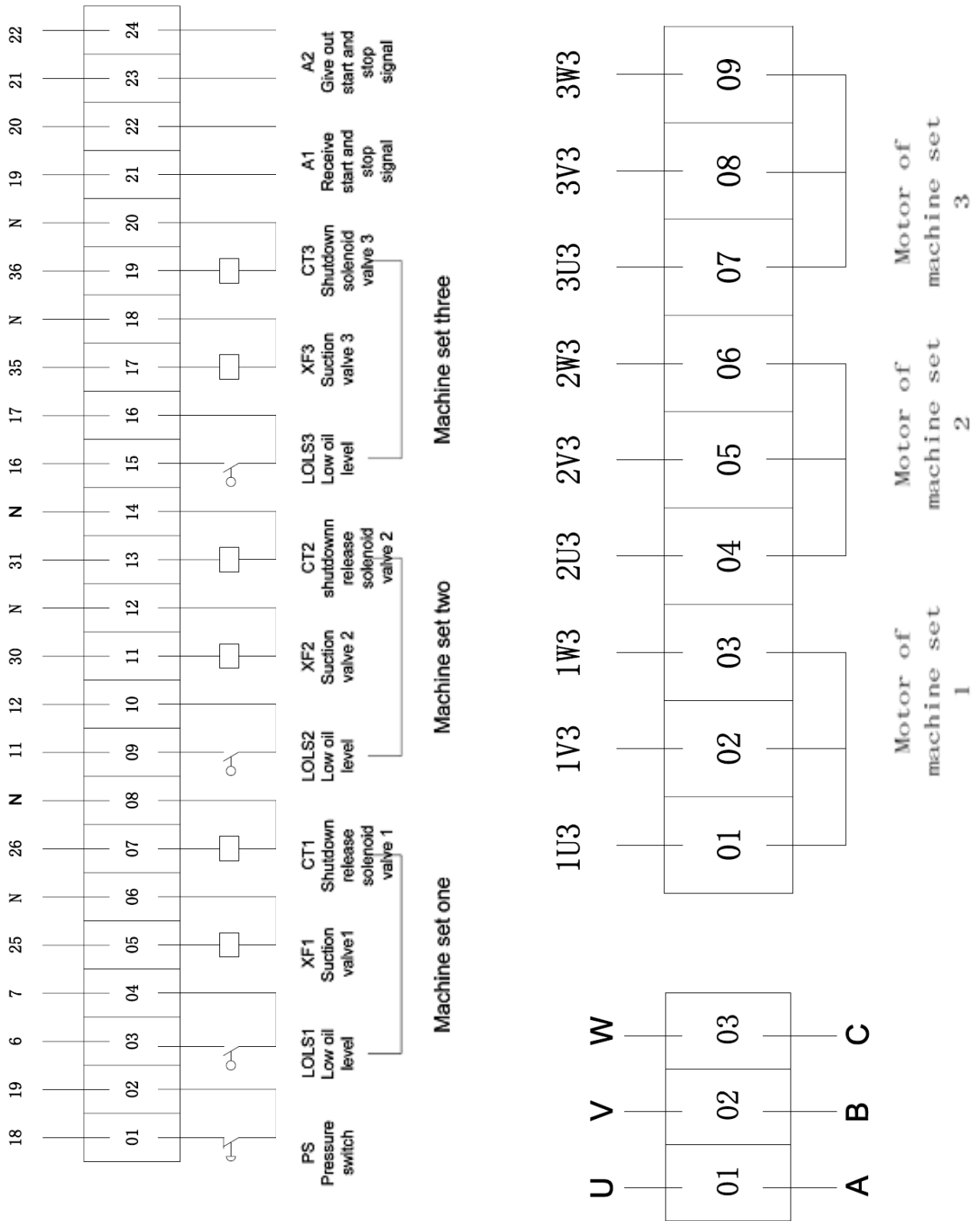


Figure 7-4.1: Main Circuit Diagram of 09SH Series Four-Engine Unit

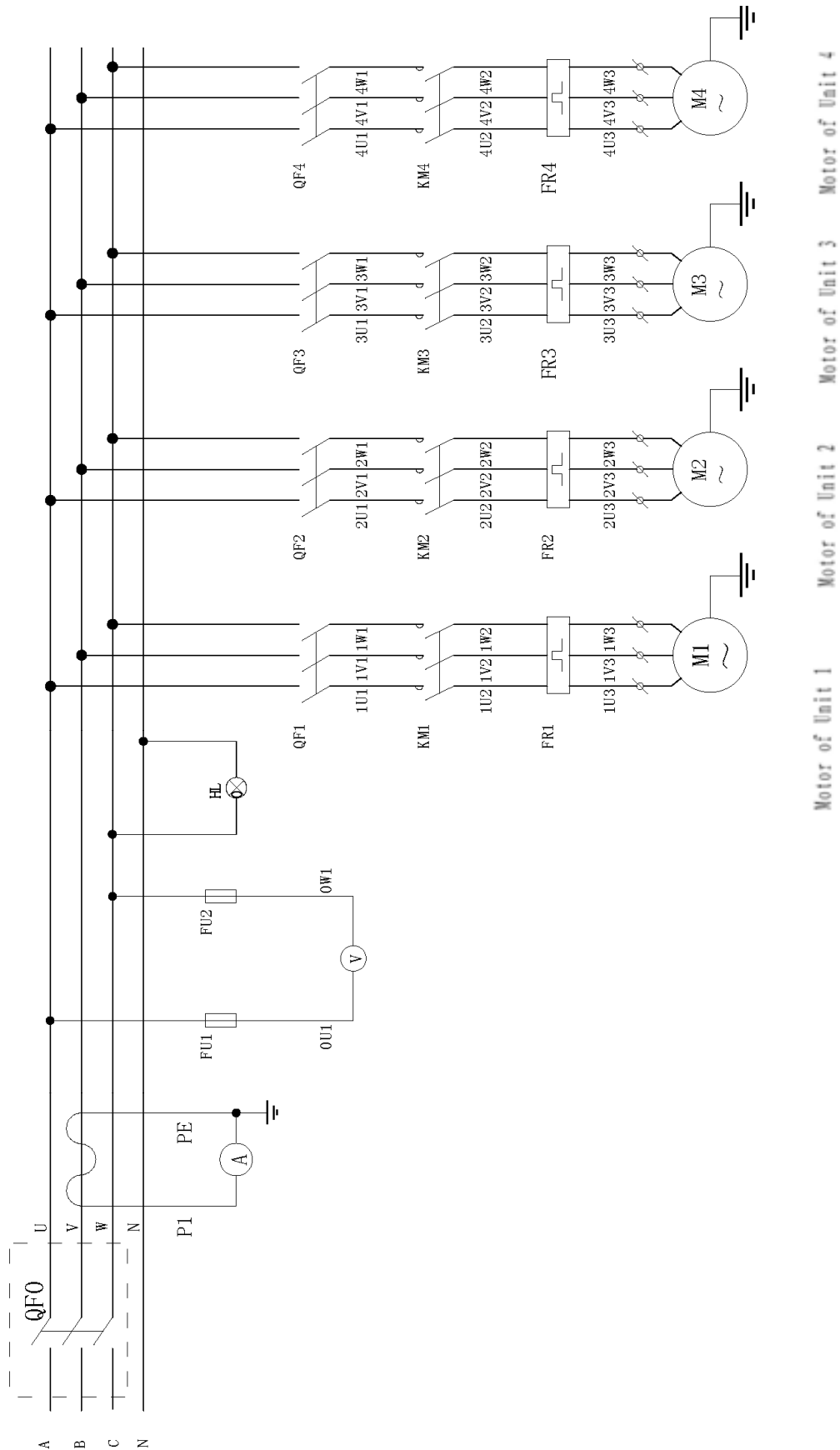


Figure 7-4.2: Secondary Circuit Diagram of 09SH Series Four-Engine Unit

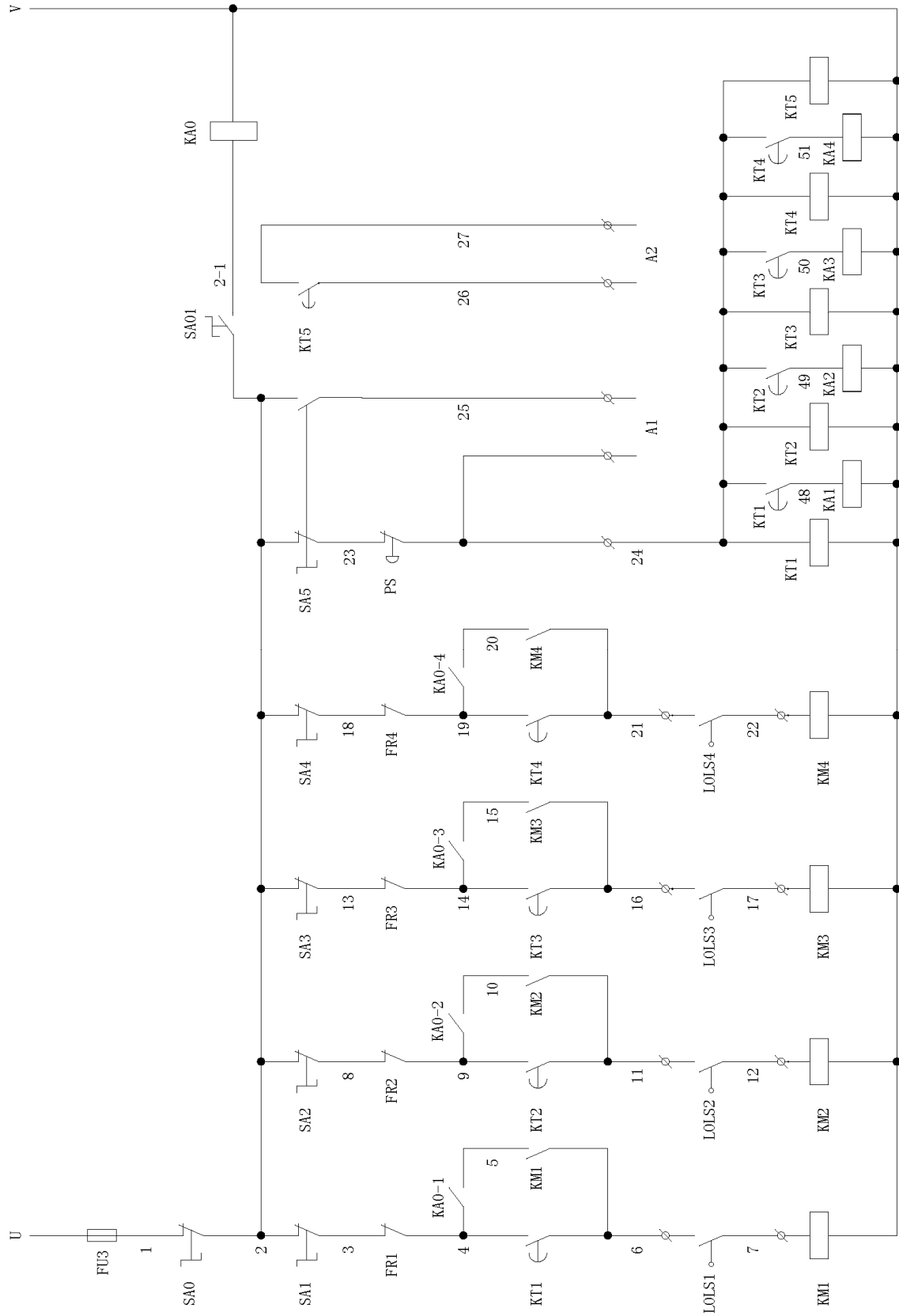


Figure 7-4.3: Secondary Circuit Diagram of 09SH Series Four-Engine Unit

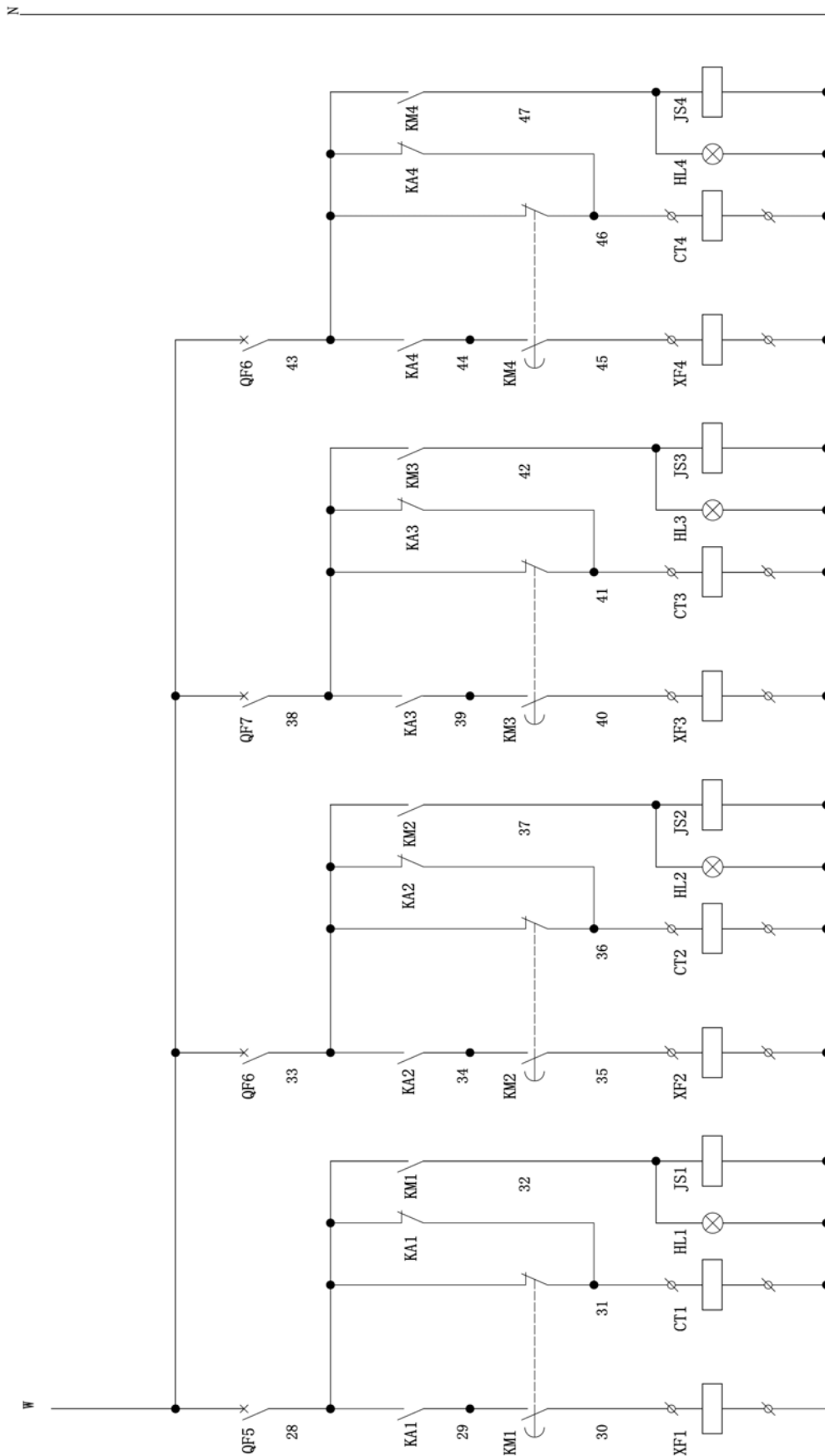


Figure 7-4.4: Terminal Connection Diagram of 09SH Series Four-Engine Unit

